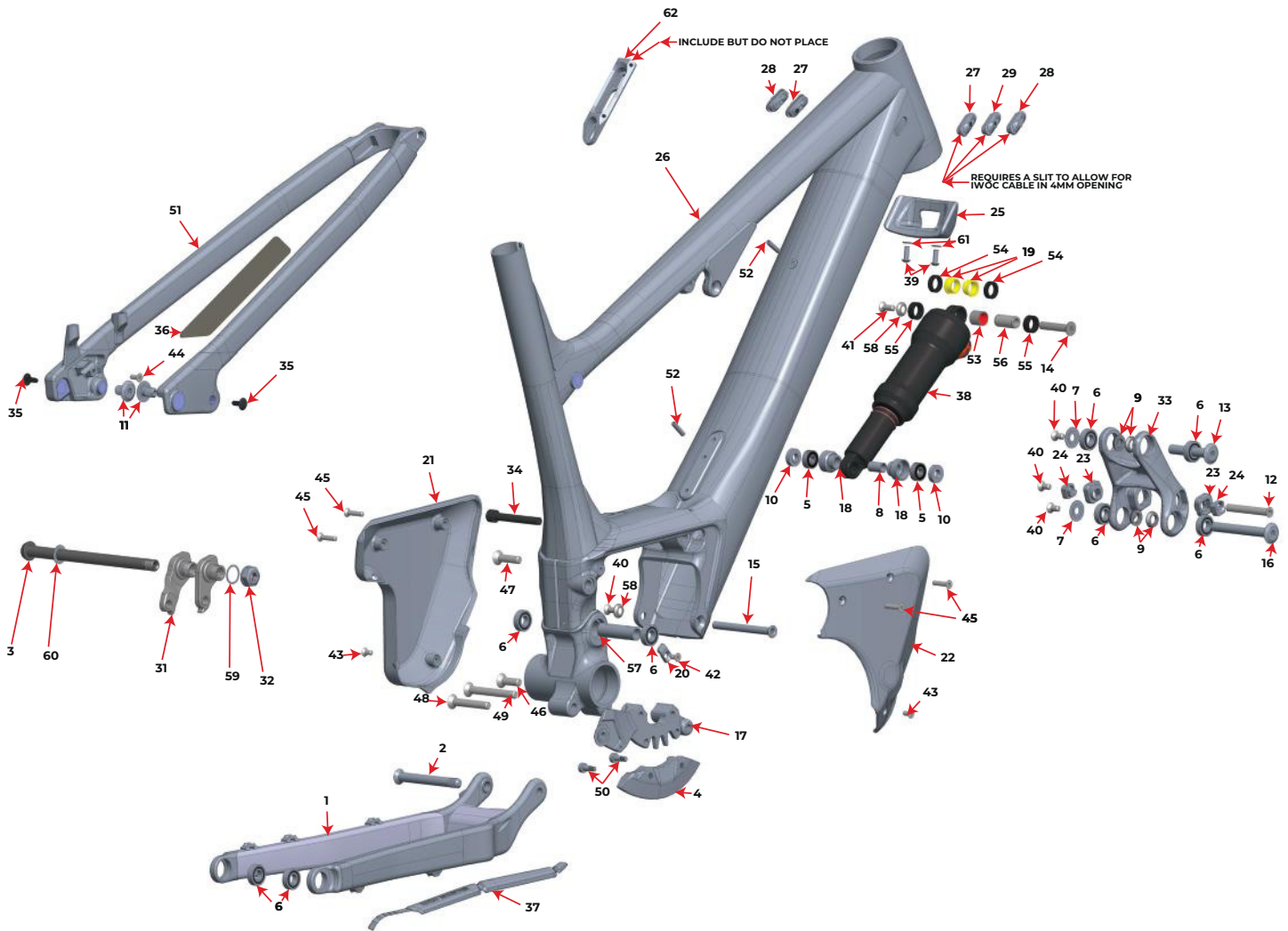


MY20 MY19

Altitude Powerplay Alloy



Parts Kits and Price List are subject to change without notice.
A \$10 handling fee will be charged for order less than \$50.

2020_2019 Altitude Powerplay Aluminium

#	QTY	PART NO.	DESCRIPTION
---	-----	----------	-------------

1810004	ALTITUDE LINK WITH BEARING KIT		
----------------	---------------------------------------	--	--

33	1	1097182	ALTITUDE LINK, 85MM LONG, RIDE9, AL7075-T6, HARD BLACK ANO
6	4	1807042	ENDURO BEARING 6900 2RS MAX TYPE, 22X10X6 SIZE

1818012	HANGER KIT SHIMANO DIRECT MOUNT		
----------------	--	--	--

31	1	1099041	REAR DER. HANGER, EXT THREAD, SHIMANO DIRECT MOUNT
32	1	1099033	HANGER NUT, M16X1, 8MM HEX
59	1	1808029	WASHER, 16x20x0.5MM, 304 SS

1818013	KIT STANDARD HANGER		
----------------	----------------------------	--	--

30	1	1099031	REAR DER. HANGER, EXT THREAD, STD MOUNT
32	1	1099033	HANGER NUT, M16X1, 8MM HEX
59	1	1808029	WASHER, 16x20x0.5MM, 304 SS

1810005	PIVOT BOLT KIT		
----------------	-----------------------	--	--

2	1	1807029	MP AXLE, M10X1.25, L:84Mm, AL7075-T6 HARD BLACK ANO
7	2	1807043	6900 BEARING CAP, AL 7075 T-6, HARD BACK ANO
9	4	1807044	6900 BEARING SPACER
11	2	1807046	BOLT, 10MM X 15MM, M10X1 EXT., AL 7075 T-6 HARD BLACK ANO
12	1	1807049	CSUNK BOLT, 8MM X 57MM X M6 INT.
13	1	1807060	BOLT, 10MM X 54MM, M6X1 INT., AL 7075-T6, HARD BLACK ANO
16	1	1807061	BOLT, 10MM X 78MM, M6X1 INT., AL 7075 T-6, HARD BLACK ANO
40	4	180566-012	FLAT HEAD C'SUNK SOCKET SCREW, M6-1.0 X 12mm, A4/316 SS, 55060.060.012
58	2	1807064	C'SUNK WASHER: (for M6 screw) ID:6 x OD:14.6 x 3.25mm THK.
41	1	180566-016	FLAT HEAD C'SUNK SOCKET SCREW, M6-1.0 X 16mm, A4/316 STAINLESS STEEL
14	1	1807062	SHOCK BOLT, SOLID, OD:8MM, L: 41MM
57	1	1807038	MAIN PIVOT CENTER SPACER, ID:10, L:48

1819029	POWERPLAY PROTECTION KIT		
----------------	---------------------------------	--	--

36	1	3708008	SEATSTAY PROTECTOR
----	---	---------	--------------------

37 1 3708035 MULTIBIKE CHAINSTAY PROTECTOR

1817011	AXLE KIT BOOST
----------------	-----------------------

3 1 3227009 REAR AXLE 12X 173MM, HARD BLACK ANO
60 1 3227006 WASHER, 12x19x0.5MM, 304 SS

1818003	SHOCK BEARING EYELET KIT
----------------	---------------------------------

5 2 1807036 ENDURO 698 LLU MAX 19X8X6
8 1 1807028 BEARING EYELET SLEEVE FOR SR 19X8X6 CUP
10 2 1807099 EYELET BEARING SPACER, 5.3MM THK, FOR 40MM LINK WIDTH
18 2 1807026 BEARING EYELET FOR SR 19X8X6 BRG

1817017	PIVOT BEARING KIT
----------------	--------------------------

6 8 1807042 ENDURO BEARING 6900 2RS MAX TYPE, 22X10X6 SIZE

1810009	RIDE 9 FLIP CHIP KIT
----------------	-----------------------------

23 2 1807003 FLIP CHIP, OUTSIDE, AL7075, BLACK ANODIZE.
24 2 1807004 FLIP CHIP, INSIDE, AL7075, BLACK ANODIZE.

1998063	Side cover kit right
----------------	-----------------------------

22 1 1997017 POWERPLAY MOTOR COVER, RIGHT
43 1 1808152 C'SUNK SOCKET SCREW, M5-0.8x10MM. BLACK STAINLESS STEEL
45 2 1808137 C'SUNK SOCKET SCREW, M5-0.8x22MM. BLACK STAINLESS STEEL

1998062	Side cover kit left
----------------	----------------------------

21 1 1997019 POWERPLAY MOTOR COVER, LEFT
43 1 1808152 C'SUNK SOCKET SCREW, M5-0.8x10MM. BLACK STAINLESS STEEL
45 2 1808137 C'SUNK SOCKET SCREW, M5-0.8x22MM. BLACK STAINLESS STEEL

1997093	Bash Guard Kit
----------------	-----------------------

4 1 1997058 RMB BASH GUARD
50 2 1807125 CUSTOM HEX SOC. HD. SHLD. SCR., 303 SS, M5 6x8

1818009	Side Cover bolt kit
----------------	----------------------------

- | | | | |
|----|---|---------|---|
| 43 | 2 | 1808152 | C'SUNK SOCKET SCREW, M5-0.8x10MM. BLACK STAINLESS STEEL |
| 45 | 4 | 1808137 | C'SUNK SOCKET SCREW, M5-0.8x22MM. BLACK STAINLESS STEEL |

1819030	GROMMET KIT FOR ALLOY POWERPLAY
----------------	--

- | | | | |
|----|---|---------|--|
| 27 | 2 | 1809004 | RUBBER GROMMET FOR 2 CABLES, 5mm,4mm YF-W13-2 |
| 28 | 2 | 1809005 | RUBBER GROMMET FOR 1 CABLE 4mm YF-W13-4 |
| 29 | 1 | 1809007 | RUBBER GROMMET FOR 2 CABLES, 5mm, 5mm YF-W13-8 |

1810030	Alloy seat stay Cap Kit for alloy frames only
----------------	--

- | | | | |
|----|---|---------|---|
| 35 | 2 | 1808034 | PLASTIC PLUG FOR M5 THREAD, 12MM BUTTON HEAD, BLACK PLASTIC |
|----|---|---------|---|

1819031	POWERPLAY RUBBER BUMPER KIT
----------------	------------------------------------

- | | | | |
|----|---|------------|---------------------------------------|
| 25 | 1 | 1999008 | POWERPLAY RUBBER BUMPER |
| 61 | 2 | 1809013 | WASHER, 5 X 10 X 1MM, STAINLESS STEEL |
| 39 | 2 | 180574-014 | DOME HEAD SCREW, M5X14MM, SS |

1819032	FRAME HARDWARE (BATTERY)
----------------	---------------------------------

- | | | | |
|----|---|------------|--|
| 15 | 1 | 1807127 | E-MTB BATTERY BOLT, 8MM x 81MM. AL7075-T6 HARD BLACK ANO |
| 40 | 1 | 180566-012 | FLAT HEAD C'SUNK SOCKET SCREW, M6-1.0 X 12mm, A4/316 SS, 55060.060.012 |
| 52 | 1 | 1810025 | POWERPLAY BATTERY NYLON SET SCREW KIT |
| 58 | 1 | 1807064 | C'SUNK WASHER: (for M6 screw) ID:6 x OD:14.6 x 3.25mm THK. |

1819033	FRAME HARDWARE (MOTOR)
----------------	-------------------------------

- | | | | |
|----|---|---------|--|
| 34 | 1 | 1808023 | SOCKET HEAD CAP SCREW; M8X60, stainless steel |
| 44 | 1 | 1807152 | C'SUNK SOCKET SCREW, M5-0.8x12mm. stainless steel |
| 47 | 1 | 1807121 | C'SUNK SOCKET SCREW, M8-1.25x30mm, stainless steel |
| 49 | 1 | 1807122 | C'SUNK SOCKET SCREW, M8-1.25x65mm, stainless steel |

1819034	CHAIN GUIDE KIT
----------------	------------------------

- | | | | |
|----|---|---------|--|
| 17 | 1 | 3399001 | LOWER CHAIN GUIDE 34T |
| 46 | 1 | 1807123 | C'SUNK SOCKET SCREW, M8-1.25x25mm, stainless steel |
| 48 | 1 | 1807124 | C'SUNK SOCKET SCREW, M8-1.25x50mm, stainless steel |

1819035	MOTOR CABLE CLAMP KIT DRIVE SIDE
----------------	---

- | | | | |
|----|---|------------|--|
| 20 | 1 | 1997081 | CABLE CLAMP, M5 CSUNK. AL6061-T6, HARD BLACK ANO. |
| 42 | 1 | 180475-010 | C'SUNK SOCKET SCREW, M5-0.8x10mm. zinc plated 10.9 steel |

1809012	OFFSIDE WATER BOTTLE ADAPTER, USES M5X14MM BOLTS
----------------	---

- | | | | |
|----|---|---------|--|
| 62 | 1 | 1809012 | OFFSIDE WATER BOTTLE ADAPTER, USES M5X14MM BOLTS |
|----|---|---------|--|

1810025	POWERPLAY BATTERY NYLON SET SCREW KIT
----------------	--

- | | | | |
|----|---|---------|---------------------------------------|
| 52 | 1 | 1810025 | POWERPLAY BATTERY NYLON SET SCREW KIT |
|----|---|---------|---------------------------------------|

Sold as a kit only. Individual part not sold separately