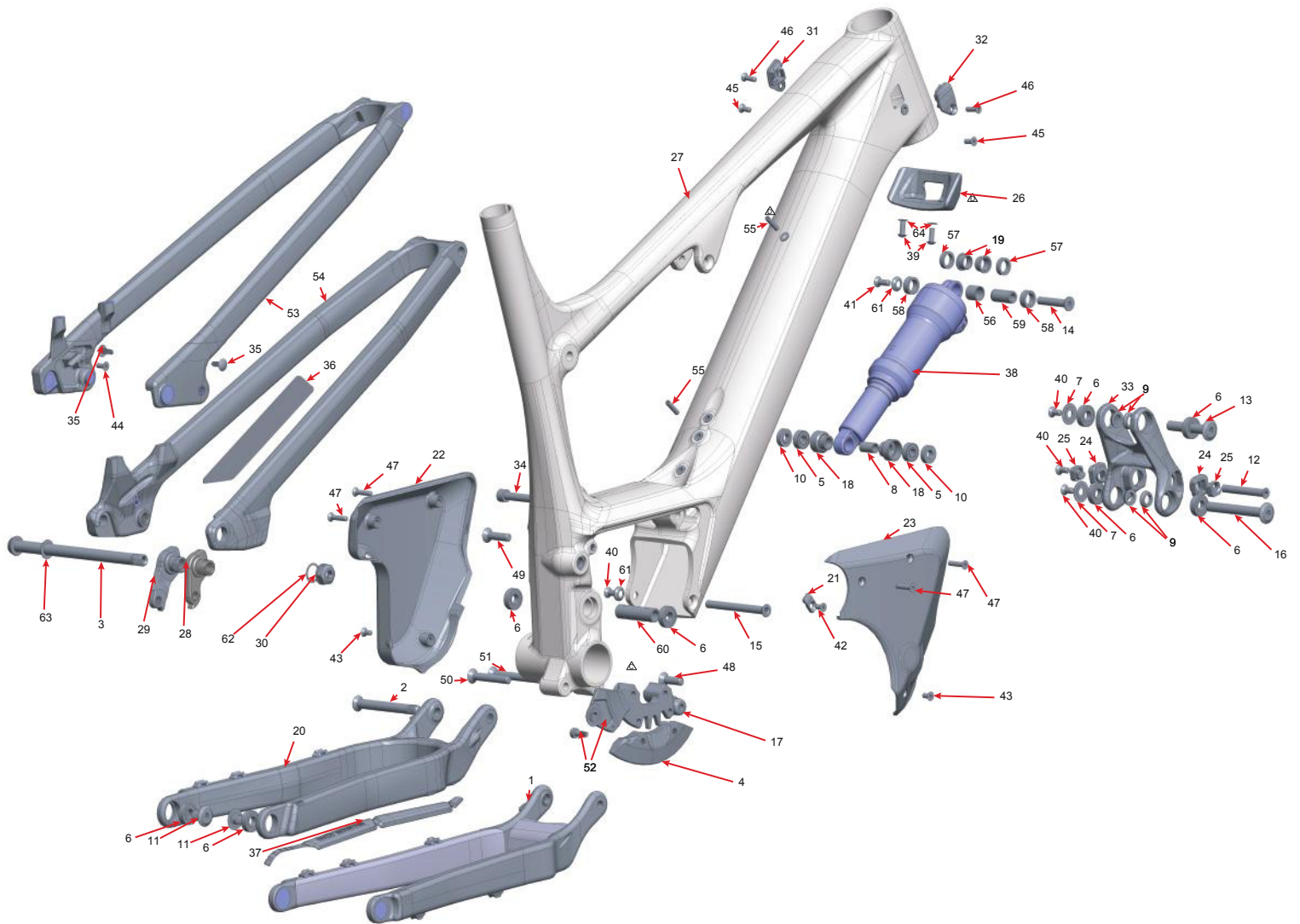


MY20 MY19 MY18

Altitude Powerplay Carbon



Parts Kits and Price List are subject to change without notice.
A \$10 handling fee will be charged for order less than \$50.

2020_2019_2018 ALTITUDE POWERPLAY CARBON

#	QTY	PART NO.	DESCRIPTION
---	-----	----------	-------------

1810004 ALTITUDE LINK WITH BEARING KIT

33	1	1097182	ALTITUDE LINK, 85MM LONG, RIDE9, AL7075-T6, HARD BLACK ANO
6	4	1807042	ENDURO BEARING 6900 2RS MAX TYPE, 22X10X6 SIZE

1818012 HANGER KIT SHIMANO DIRECT MOUNT

29	1	1099041	REAR DER. HANGER, EXT THREAD, SHIMANO DIRECT MOUNT
30	1	1099033	HANGER NUT, M16X1, 8MM HEX
62	1	1808029	WASHER, 16x20x0.5MM, 304 SS

1818013 KIT STANDARD HANGER

28	1	1099031	REAR DER. HANGER, EXT THREAD, STD MOUNT
30	1	1099033	HANGER NUT, M16X1, 8MM HEX
62	1	1808029	WASHER, 16x20x0.5MM, 304 SS

1810005 PIVOT BOLT KIT

2	1	1807029	MP AXLE, M10X1.25, L:84Mm, AL7075-T6 HARD BLACK ANO
7	2	1807043	6900 BEARING CAP, AL 7075 T-6, HARD BACK ANO
9	4	1807044	6900 BEARING SPACER
11	2	1807046	BOLT, 10MM X 15MM, M10X1 EXT., AL 7075 T-6 HARD BLACK ANO
12	1	1807049	CSUNK BOLT, 8MM X 57MM X M6 INT.
13	1	1807060	BOLT, 10MM X 54MM, M6X1 INT., AL 7075-T6, HARD BLACK ANO
16	1	1807061	BOLT, 10MM X 78MM, M6X1 INT., AL 7075 T-6, HARD BLACK ANO
40	4	180566-012	FLAT HEAD C'SUNK SOCKET SCREW, M6-1.0 X 12mm, A4/316 SS, 55060.060.012
61	2	1807064	C'SUNK WASHER: (for M6 screw) ID:6 x OD:14.6 x 3.25mm THK.
41	1	180566-016	FLAT HEAD C'SUNK SOCKET SCREW, M6-1.0 X 16mm, A4/316 STAINLESS STEEL
14	1	1807062	SHOCK BOLT, SOLID, OD:8MM, L: 41MM
60	1	1807038	MAIN PIVOT CENTER SPACER, ID:10, L:48

1819029 POWERPLAY PROTECTION KIT

36	1	3708008	SEATSTAY PROTECTOR
37	1	3708035	MULTIBIKE CHAINSTAY PROTECTOR

1817011	AXLE KIT BOOST
----------------	-----------------------

3	1	3227009	REAR AXLE 12X 173MM, HARD BLACK ANO
63	1	3227006	WASHER, 12x19x0.5MM, 304 SS

1818003	SHOCK BEARING EYELET KIT
----------------	---------------------------------

5	2	1807036	ENDURO 698 LLU MAX 19X8X6
8	1	1807028	BEARING EYELET SLEEVE FOR SR 19X8X6 CUP
10	2	1807099	EYELET BEARING SPACER, 5.3MM THK, FOR 40MM LINK WIDTH
18	2	1807026	BEARING EYELET FOR SR 19X8X6 BRG

1817017	PIVOT BEARING KIT
----------------	--------------------------

6	8	1807042	ENDURO BEARING 6900 2RS MAX TYPE, 22X10X6 SIZE
---	---	---------	--

1817023	HEAD TUBE PANEL KIT
----------------	----------------------------

31	1	1097136	HT PORT PANEL, LEFT
32	1	1097140	HT PORT PANEL, RIGHT
45	2	1808036	C'SUNK SOCKET SCREW, M5-0.8x12mm. HARD BLACK ANODIZED ALU
46	2	1806009	FLAT HEAD C'SUNK SOCKET SCREW, M5-0.8 X 16mm, ALUMINIUM

1810009	RIDE 9 FLIP CHIP KIT
----------------	-----------------------------

24	2	1807003	FLIP CHIP, OUTSIDE, AL7075, BLACK ANODIZE.
25	2	1807004	FLIP CHIP, INSIDE, AL7075, BLACK ANODIZE.

1998063	SIDE MOTOR COVER KIT RIGHT
----------------	-----------------------------------

23	1	1997017	POWERPLAY MOTOR COVER, RIGHT
43	1	1808152	C'SUNK SOCKET SCREW, M5-0.8x10MM. BLACK STAINLESS STEEL
47	2	1808137	C'SUNK SOCKET SCREW, M5-0.8x22MM. BLACK STAINLESS STEEL

1998062	SIDE MOTOR COVER KIT LEFT
----------------	----------------------------------

22	1	1997019	POWERPLAY MOTOR COVER, LEFT
43	1	1808152	C'SUNK SOCKET SCREW, M5-0.8x10MM. BLACK STAINLESS STEEL
47	2	1808137	C'SUNK SOCKET SCREW, M5-0.8x22MM. BLACK STAINLESS STEEL

1997093	BASH GUARD KIT
----------------	-----------------------

4	1	1997058	RMB BASH GUARD
52	2	1807125	CUSTOM HEX SOC. HD. SHLD. SCR., 303 SS, M5 6x8

1818009	MOTOR COVER BOLT KIT
----------------	-----------------------------

43	2	1808152	C'SUNK SOCKET SCREW, M5-0.8x10MM. BLACK STAINLESS STEEL
47	4	1808137	C'SUNK SOCKET SCREW, M5-0.8x22MM. BLACK STAINLESS STEEL

1819031	POWERPLAY RUBBER BUMPER KIT
----------------	------------------------------------

26	1	1999008	POWERPLAY RUBBER BUMPER
64	2	1809013	WASHER, 5 X 10 X 1MM, STAINLESS STEEL
39	2	180574-014	DOME HEAD SCREW, M5X14MM, SS

1819032	FRAME HARDWARE (BATTERY)
----------------	---------------------------------

15	1	1807127	E-MTB BATTERY BOLT, 8MM x 81MM. AL7075-T6 HARD BLACK ANO
40	1	180566-012	FLAT HEAD C'SUNK SOCKET SCREW, M6-1.0 X 12mm, A4/316 SS, 55060.060.012
55	1	1810025	POWERPLAY BATTERY NYLON SET SCREW KIT
61	1	1807064	C'SUNK WASHER: (for M6 screw) ID:6 x OD:14.6 x 3.25mm THK.

1819033	CHAIN GUIDE KIT
----------------	------------------------

34	1	1808023	SOCKET HEAD CAP SCREW; M8X60, stainless steel
44	1	1807152	C'SUNK SOCKET SCREW, M5-0.8x12mm. stainless steel
49	1	1807121	C'SUNK SOCKET SCREW, M8-1.25x30mm, stainless steel
51	1	1807122	C'SUNK SOCKET SCREW, M8-1.25x65mm, stainless steel

1819034	MOTOR CABLE CLAMP KIT DRIVE SIDE
----------------	---

17	1	3399001	LOWER CHAIN GUIDE 34T
48	1	1807123	C'SUNK SOCKET SCREW, M8-1.25x25mm, stainless steel
50	1	1807124	C'SUNK SOCKET SCREW, M8-1.25x50mm, stainless steel

1819035	POWERPLAY BATTERY NYLON SET SCREW KIT
----------------	--

21	1	1997081	CABLE CLAMP, M5 CSUNK. AL6061-T6, HARD BLACK ANO.
42	1	180475-010	C'SUNK SOCKET SCREW, M5-0.8x10mm. zinc plated 10.9 steel

1810025	POWERPLAY BATTERY NYLON SET SCREW KIT
----------------	--

55	1	1810025	POWERPLAY BATTERY NYLON SET SCREW KIT
----	---	---------	---------------------------------------

Sold as a kit only. Individual part not sold separately