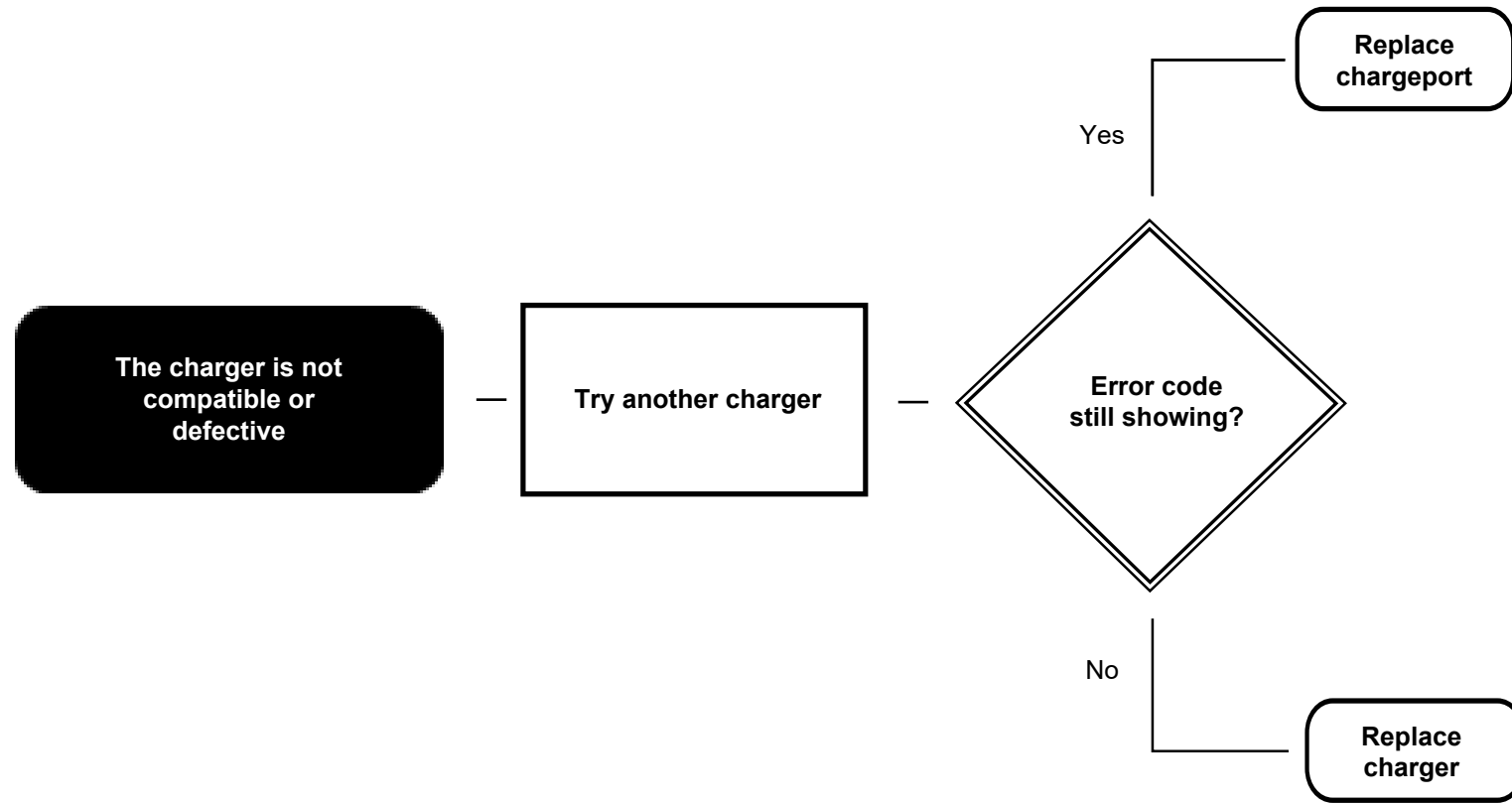
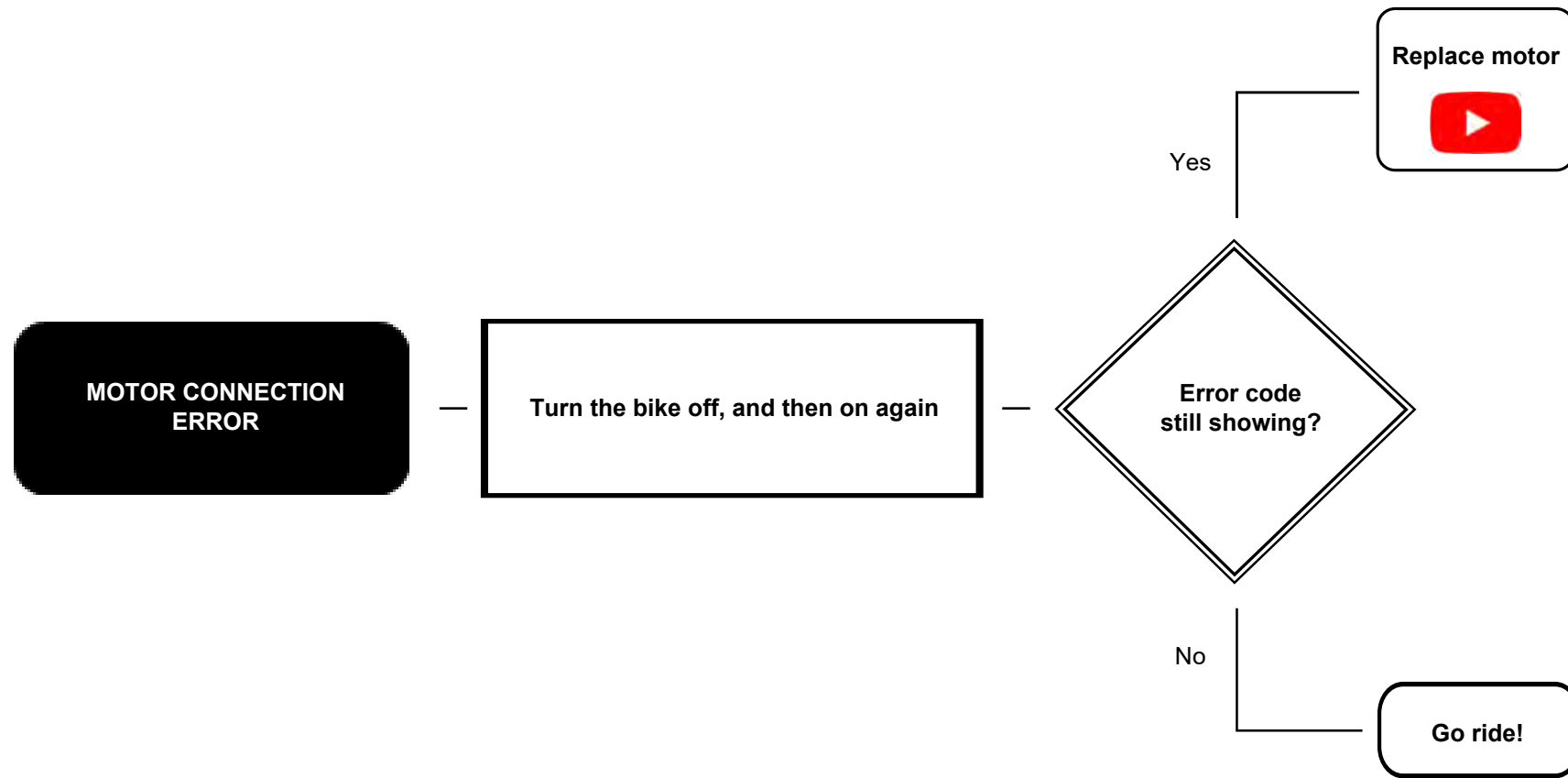


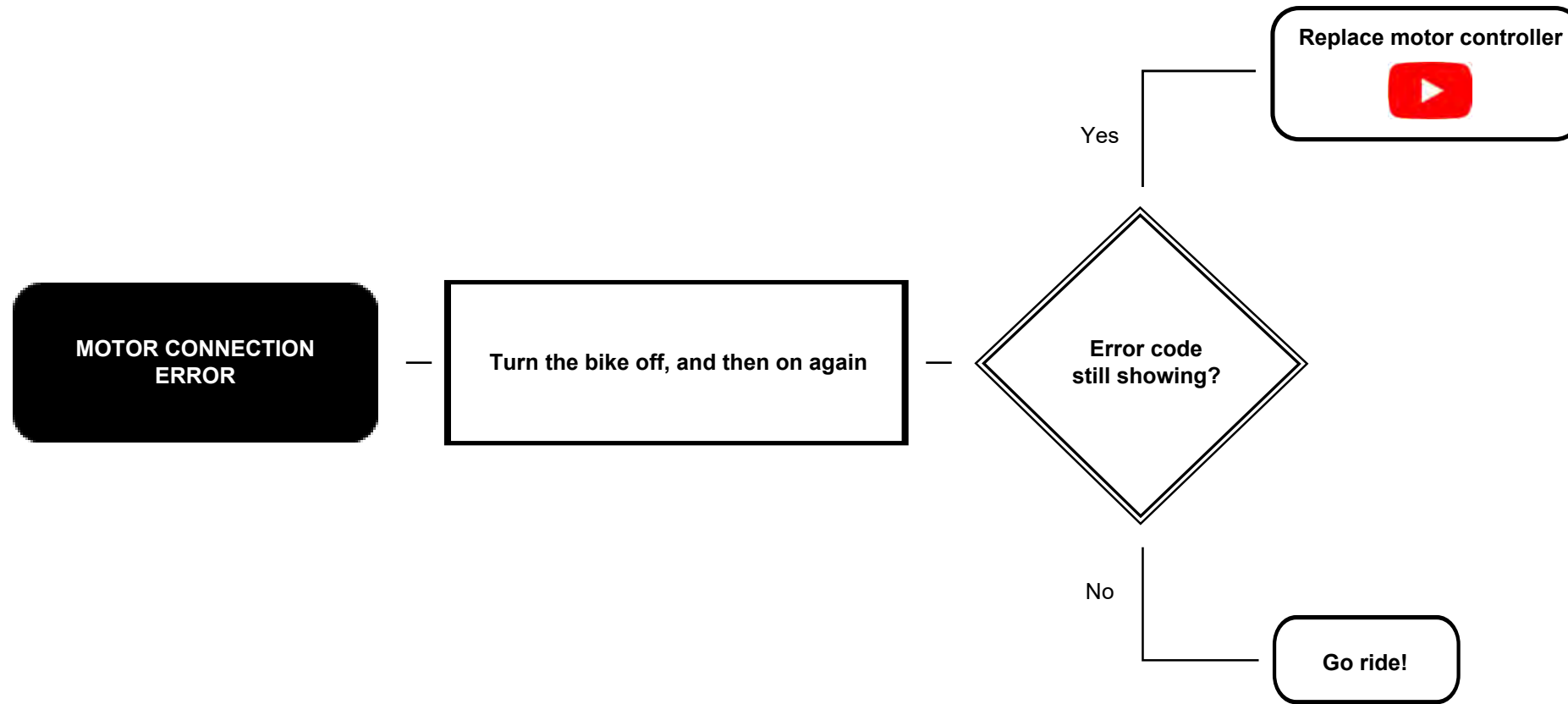
# ERROR CODE 100, 221



# ERROR CODE 103, 121, 127, 177, 178



# ERROR CODE 106, 109, 136, 139, 169, 176

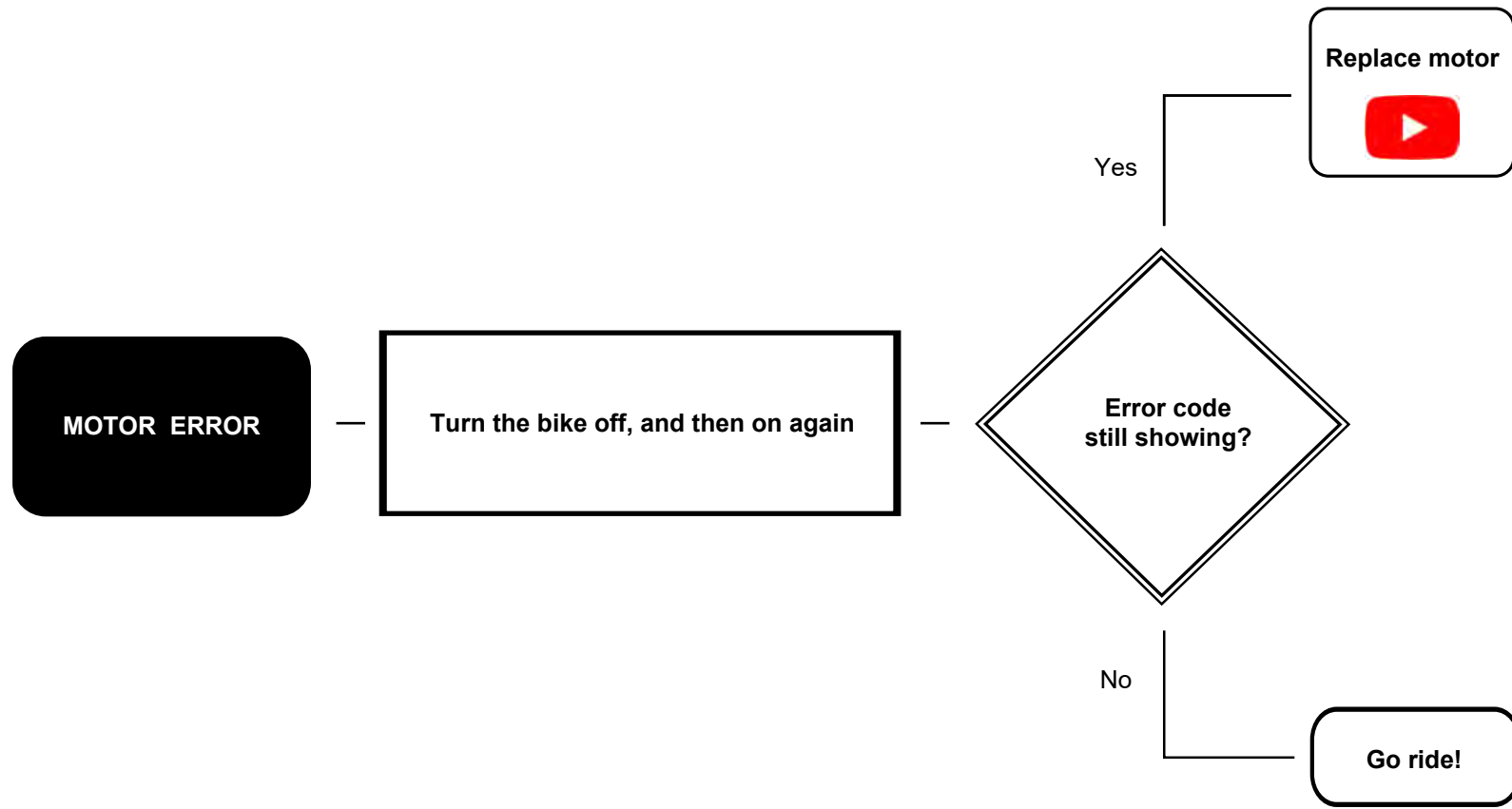


# ERROR CODE 112

Motorcontroller is too hot and shuts off

Motor controller needs to cool down below 100°C

# ERROR CODE 115, 185, 186



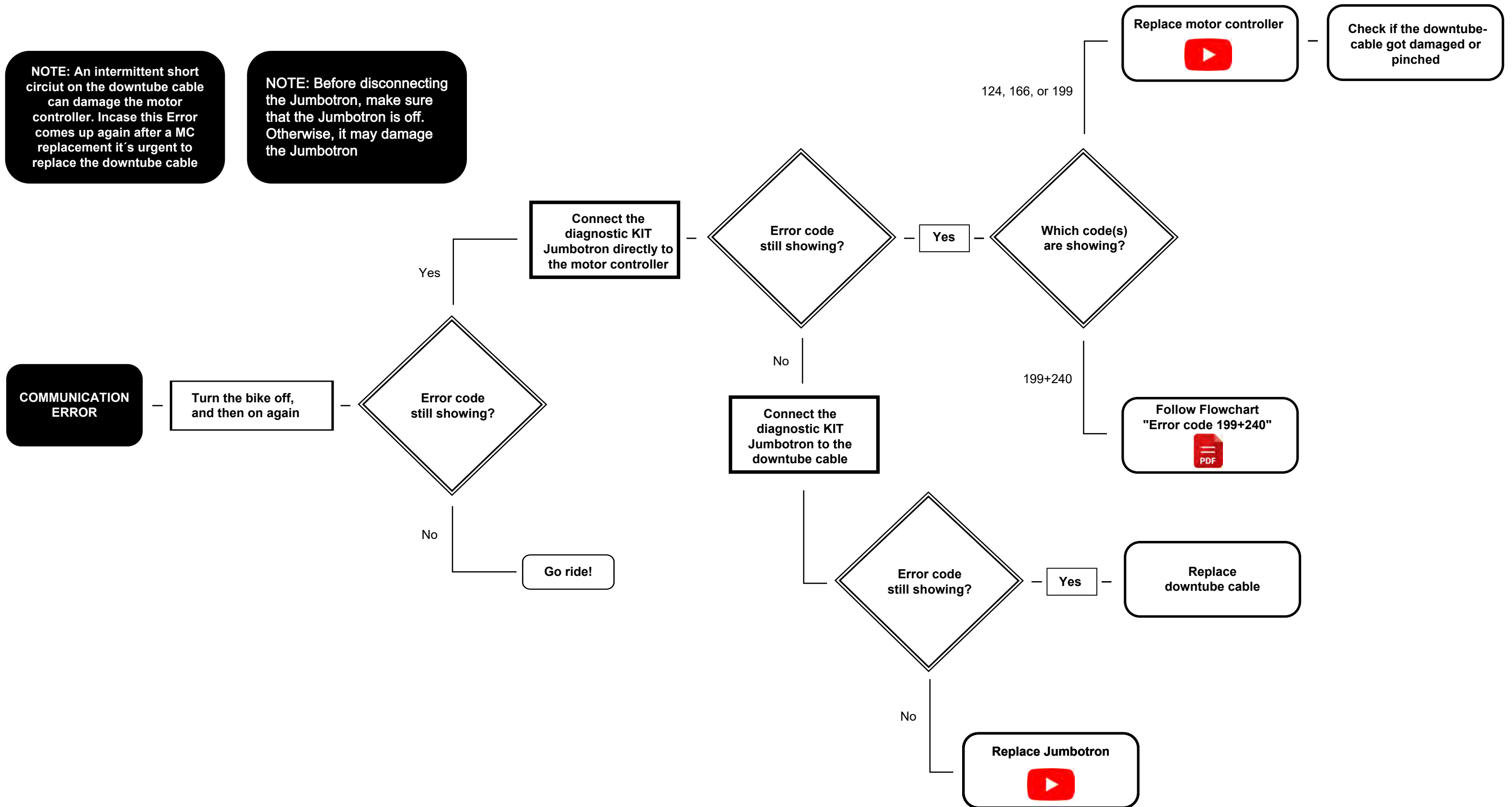
# ERROR CODE 118, 181, 184



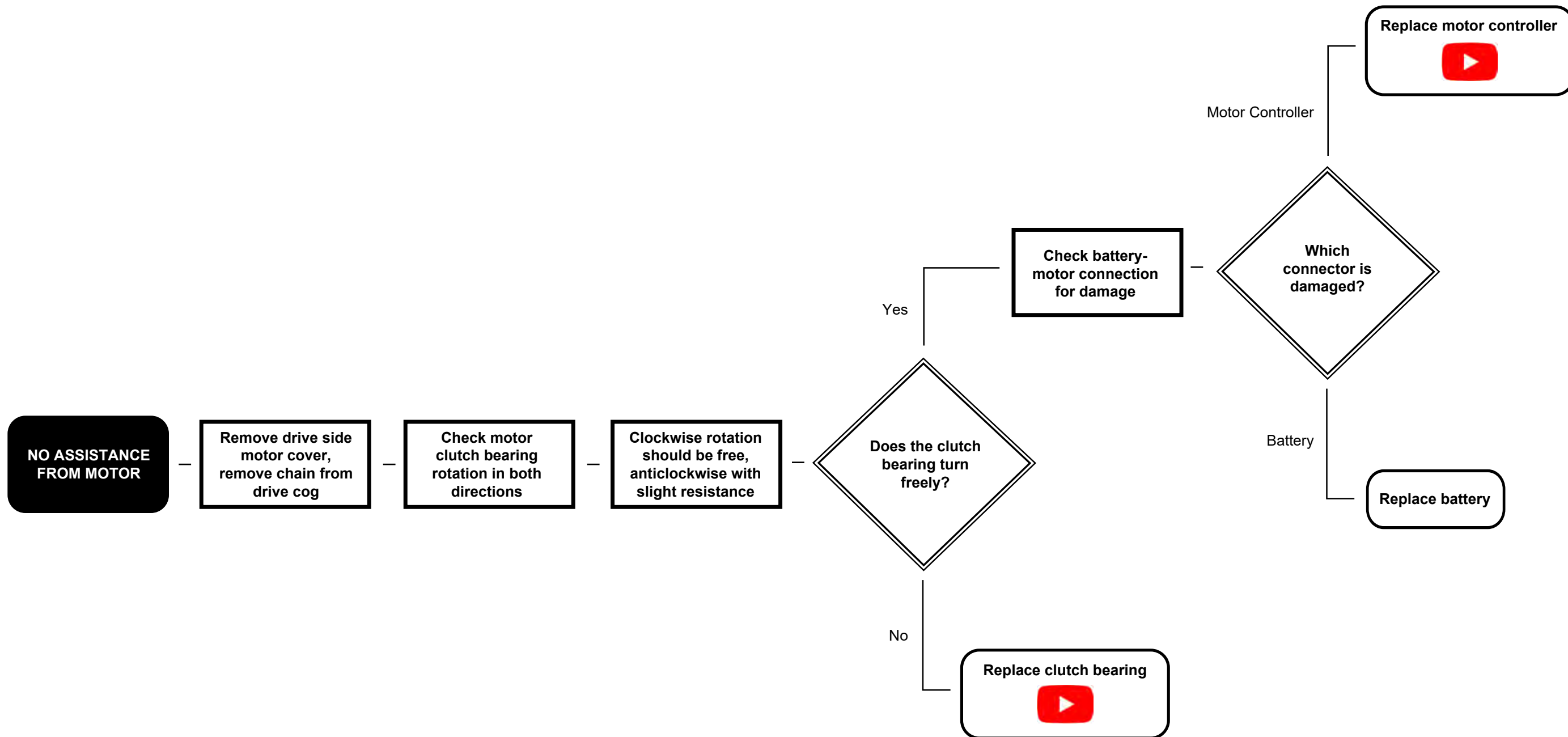
# ERROR CODE 124, 166, 199

**NOTE:** An intermittent short circuit on the downtube cable can damage the motor controller. In case this Error comes up again after a MC replacement it's urgent to replace the downtube cable

**NOTE:** Before disconnecting the Jumbotron, make sure that the Jumbotron is off. Otherwise, it may damage the Jumbotron

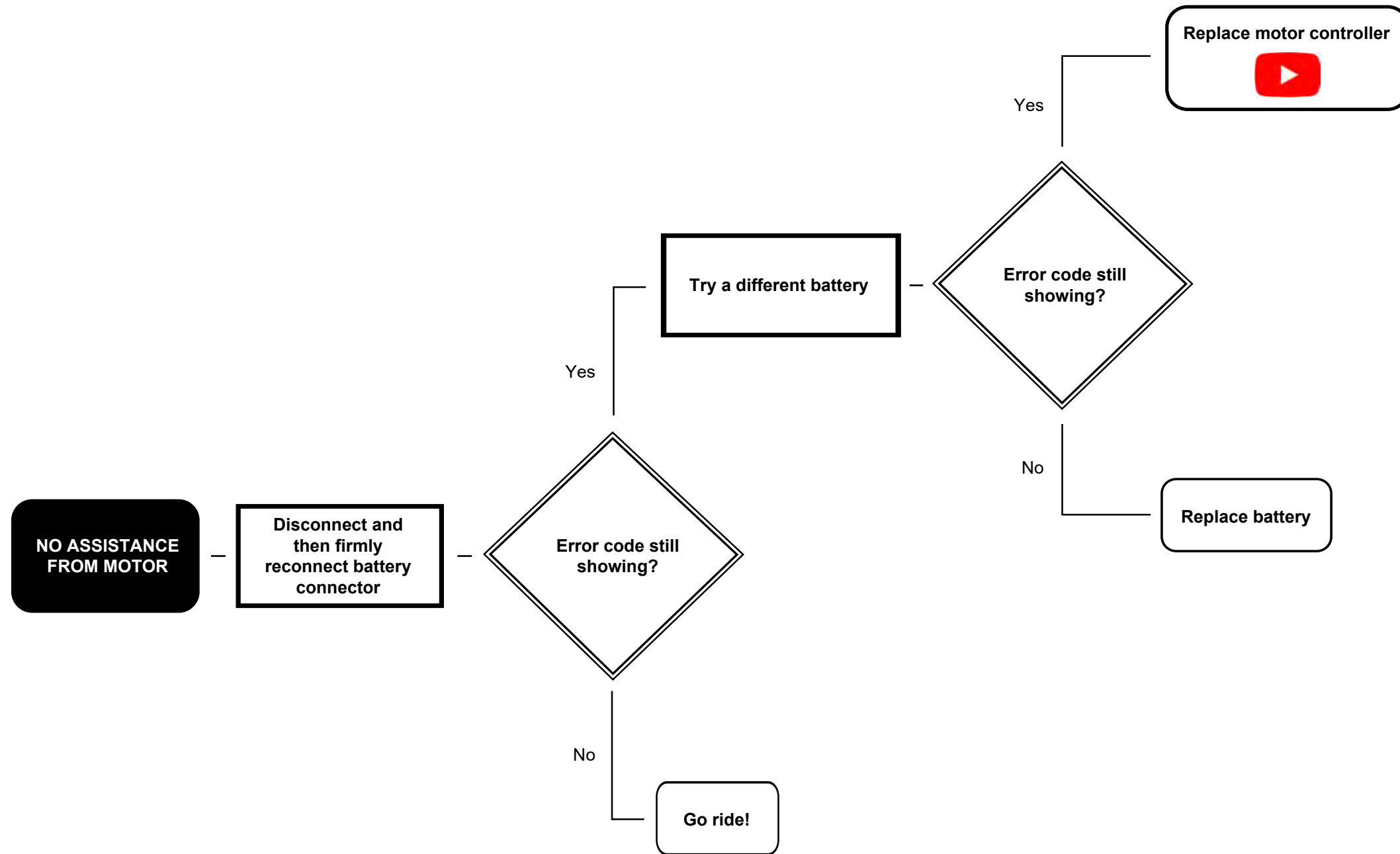


# ERROR CODE 133





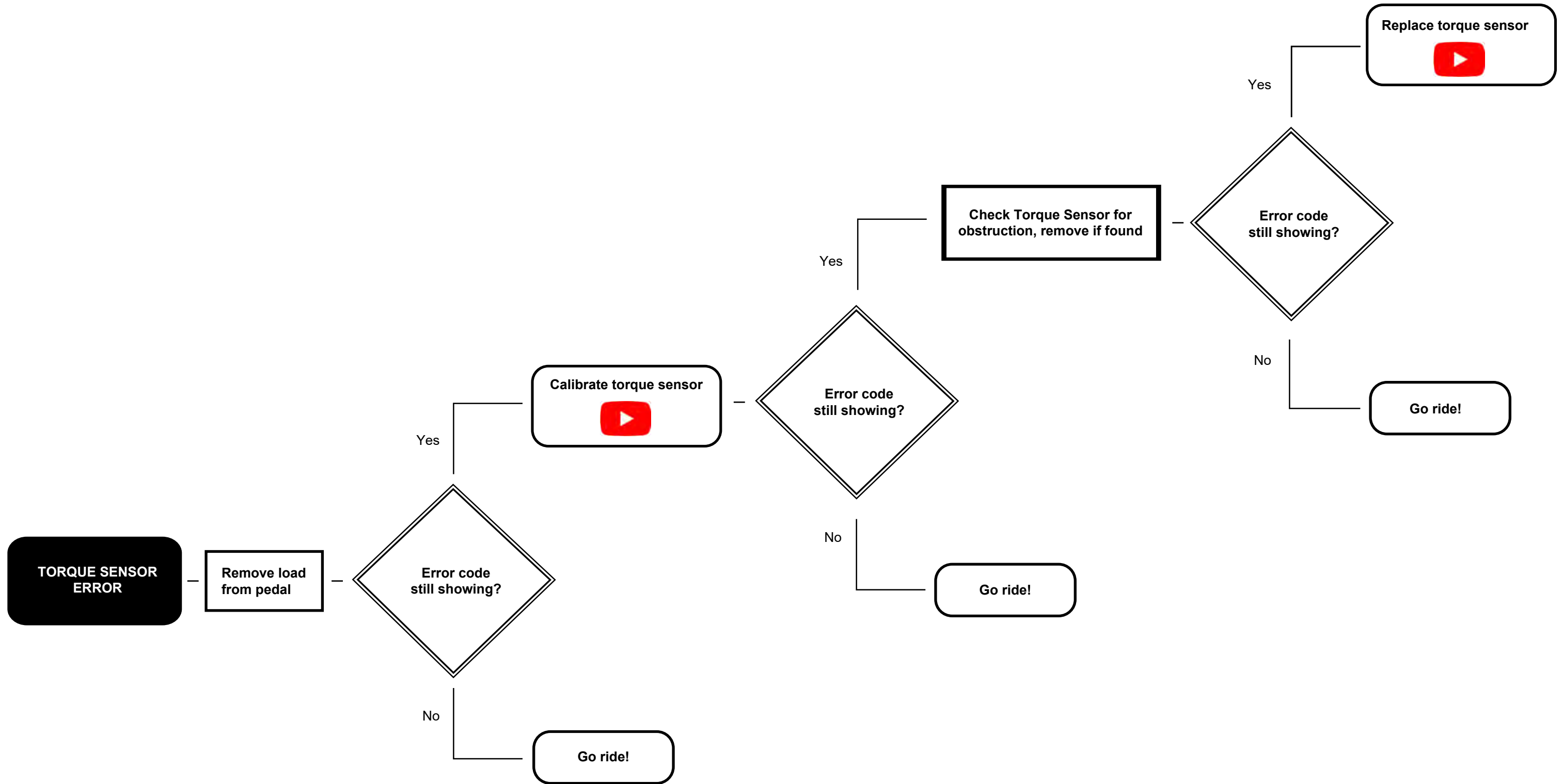
# ERROR CODE 142



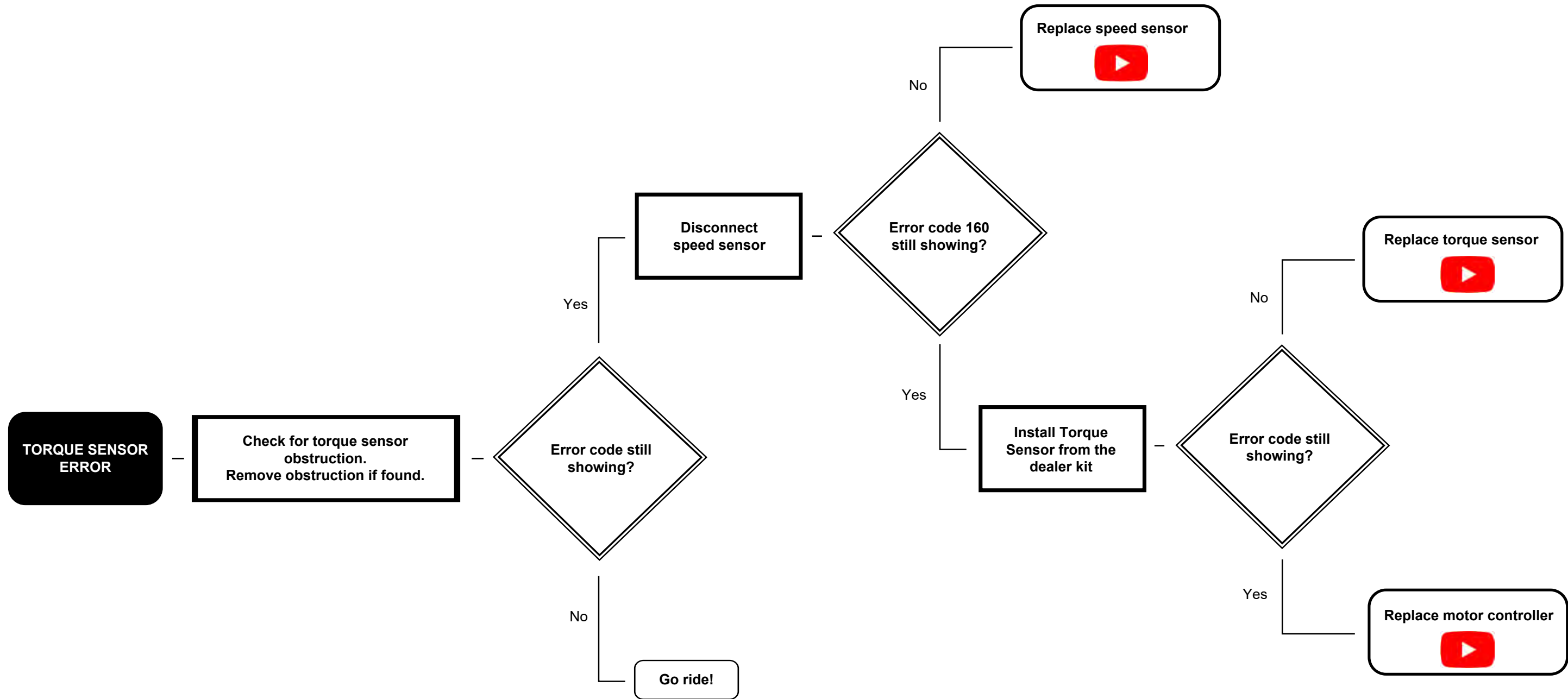
# ERROR CODE 145, 148, 151



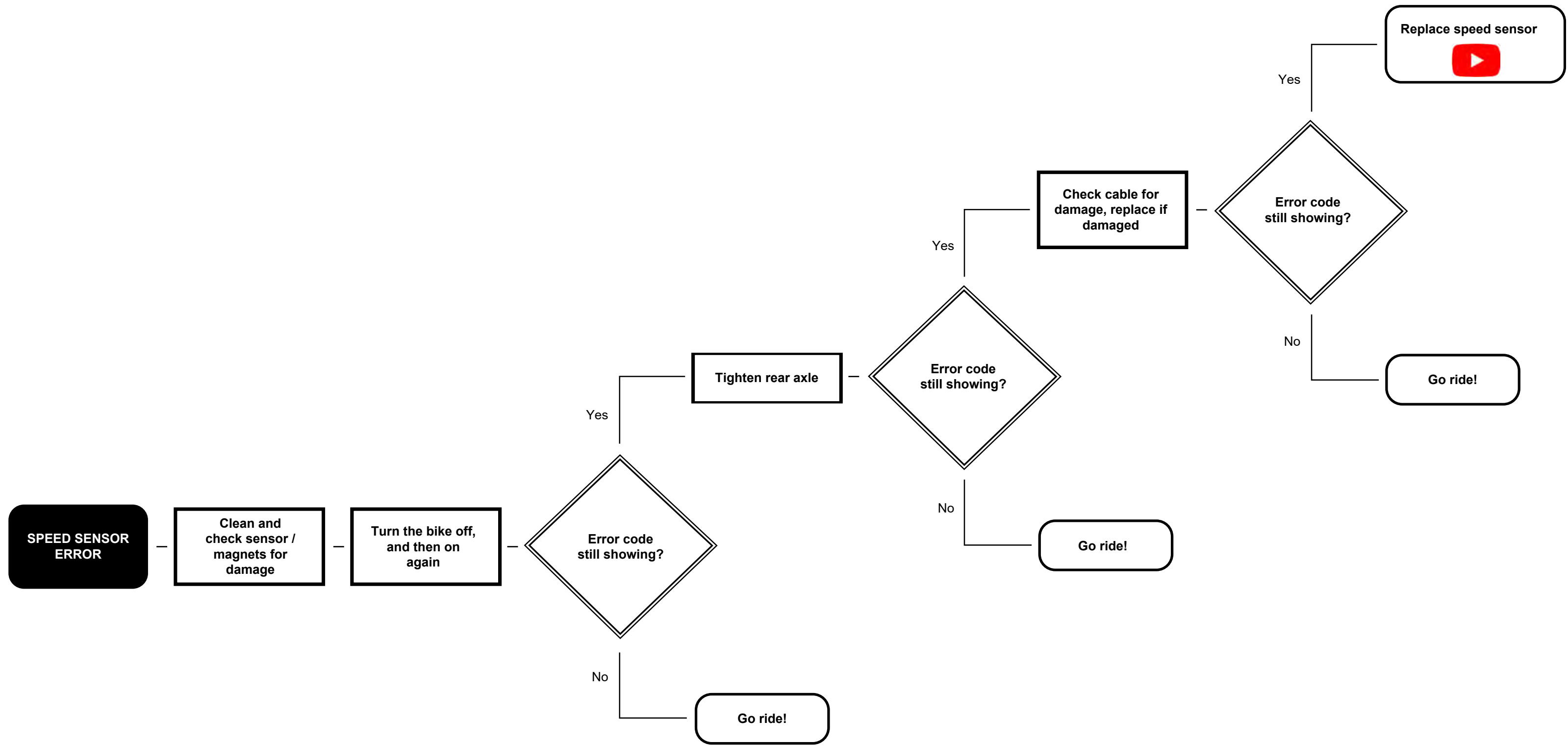
# ERROR CODE 157



# ERROR CODE 160



# ERROR CODE 180, 189



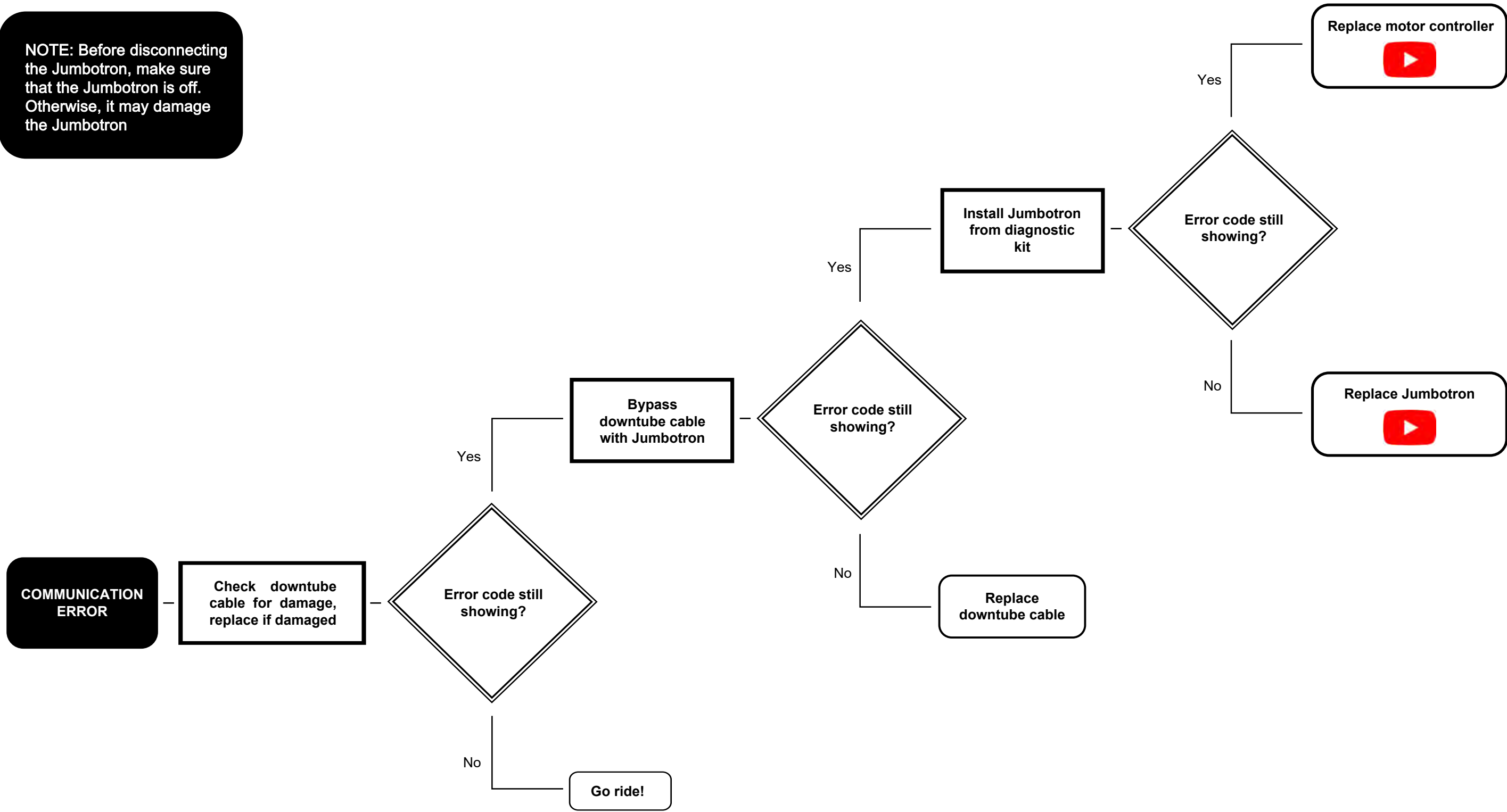
# ERROR CODE 183

Motor controller  
overheating warning

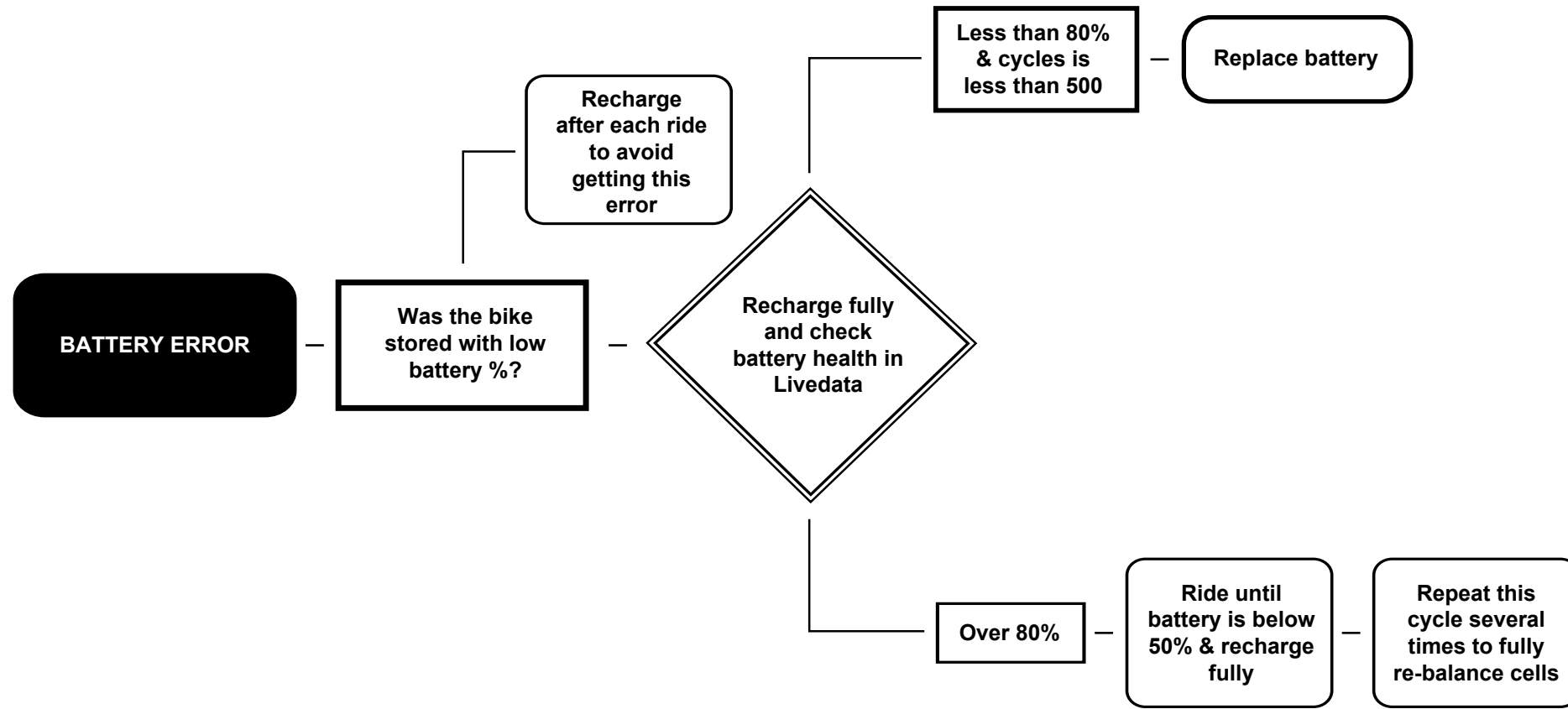
Adjust riding until temp.  
is below 80°C motor  
power is reduced above  
80°C

# ERROR CODE 199+240

**NOTE:** Before disconnecting the Jumbotron, make sure that the Jumbotron is off. Otherwise, it may damage the Jumbotron



# ERROR CODE 201





# ERROR CODE 210

Battery temperature is too hot

Main battery is too hot. Normal function will resume below 60°C

# ERROR CODE 212

Battery temperature is too low

Battery temp. is too low. Normal function will resume at -15°C

# ERROR CODE 214

Battery temperature is too low

Battery temp. is too low to recharge.  
Charging will resume at 3°C

# ERROR CODE 215

Battery Managment System  
temperature is too hot

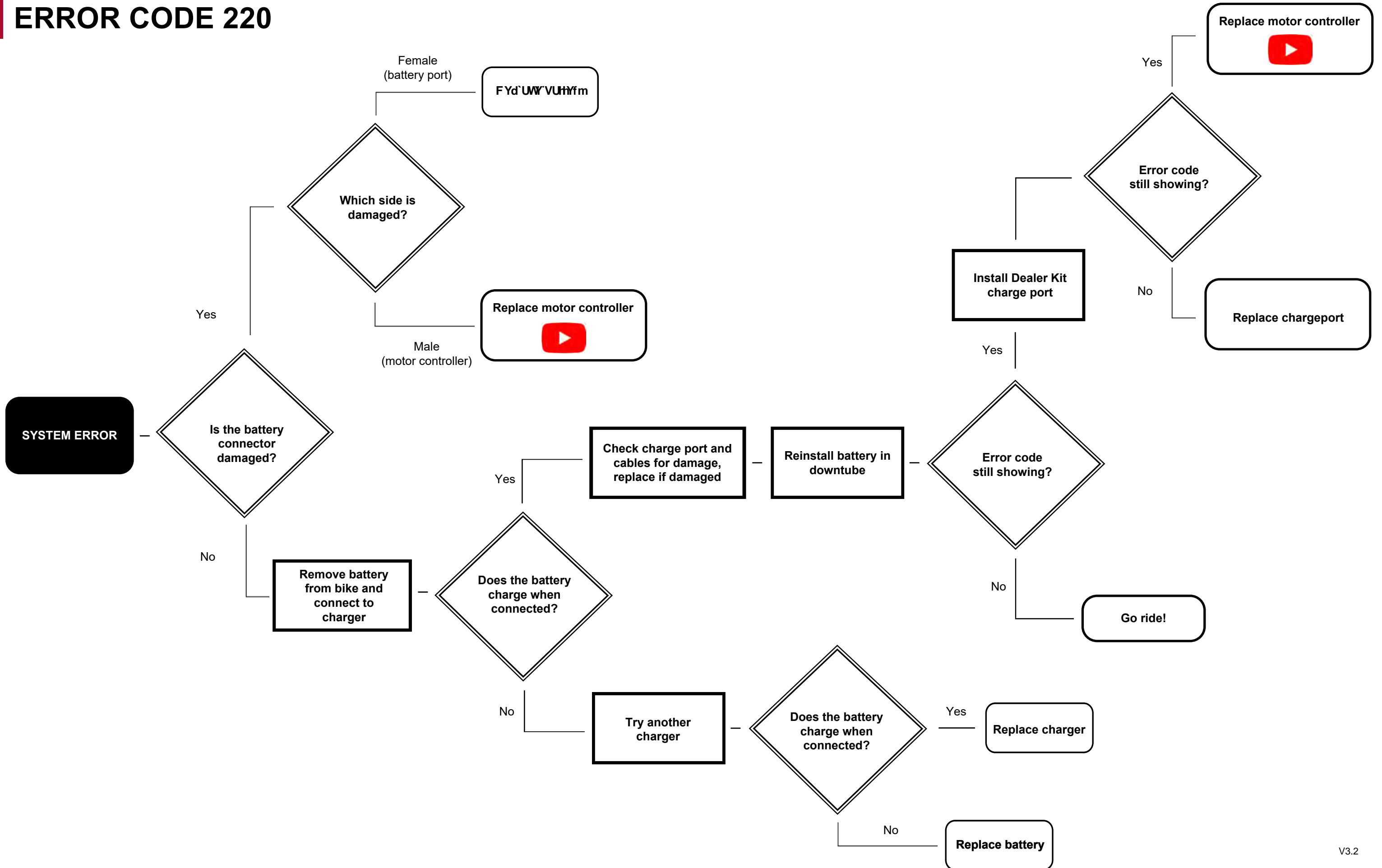
Main battery BMS  
is too hot. Normal  
function will  
resume below 80°C

# ERROR CODE 216

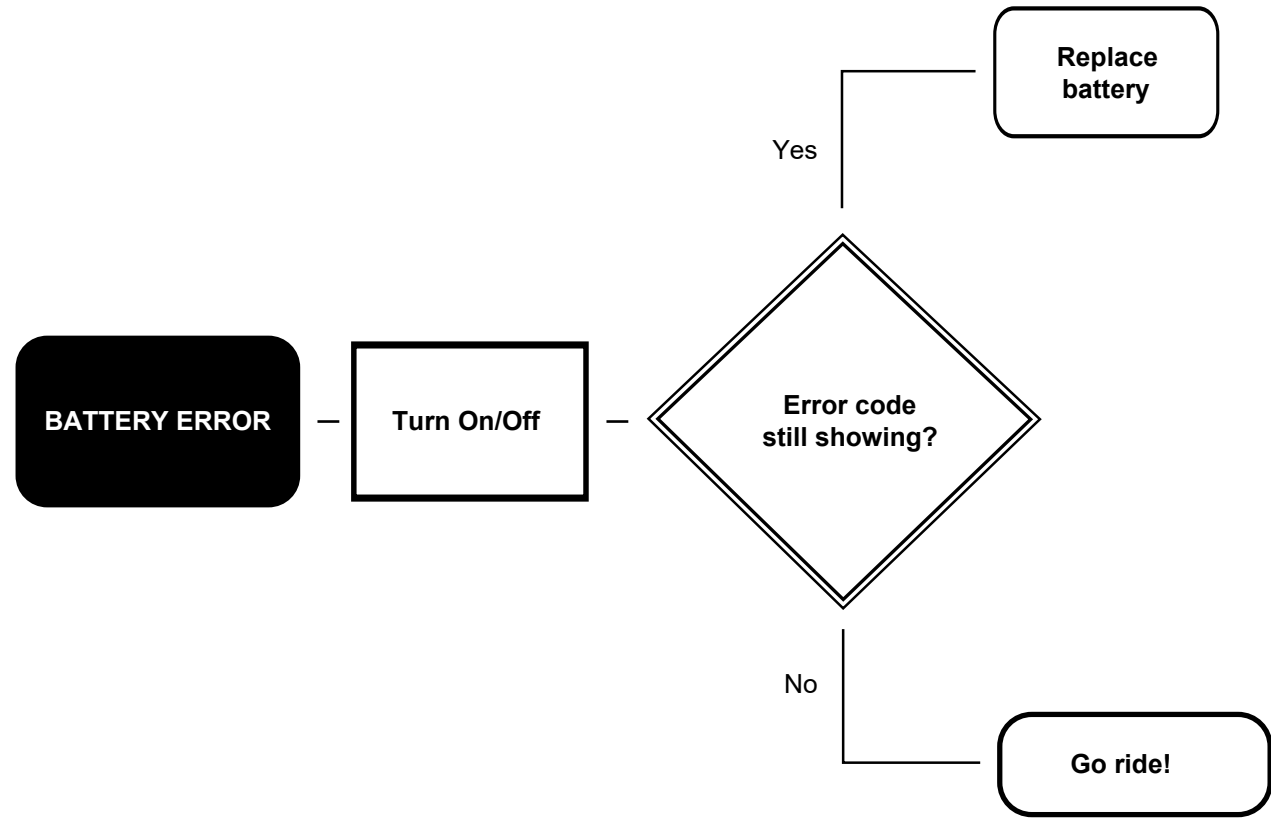
Battery temperature is too hot

Battery temp. is too hot to recharge.  
Charging will resume below 45°C

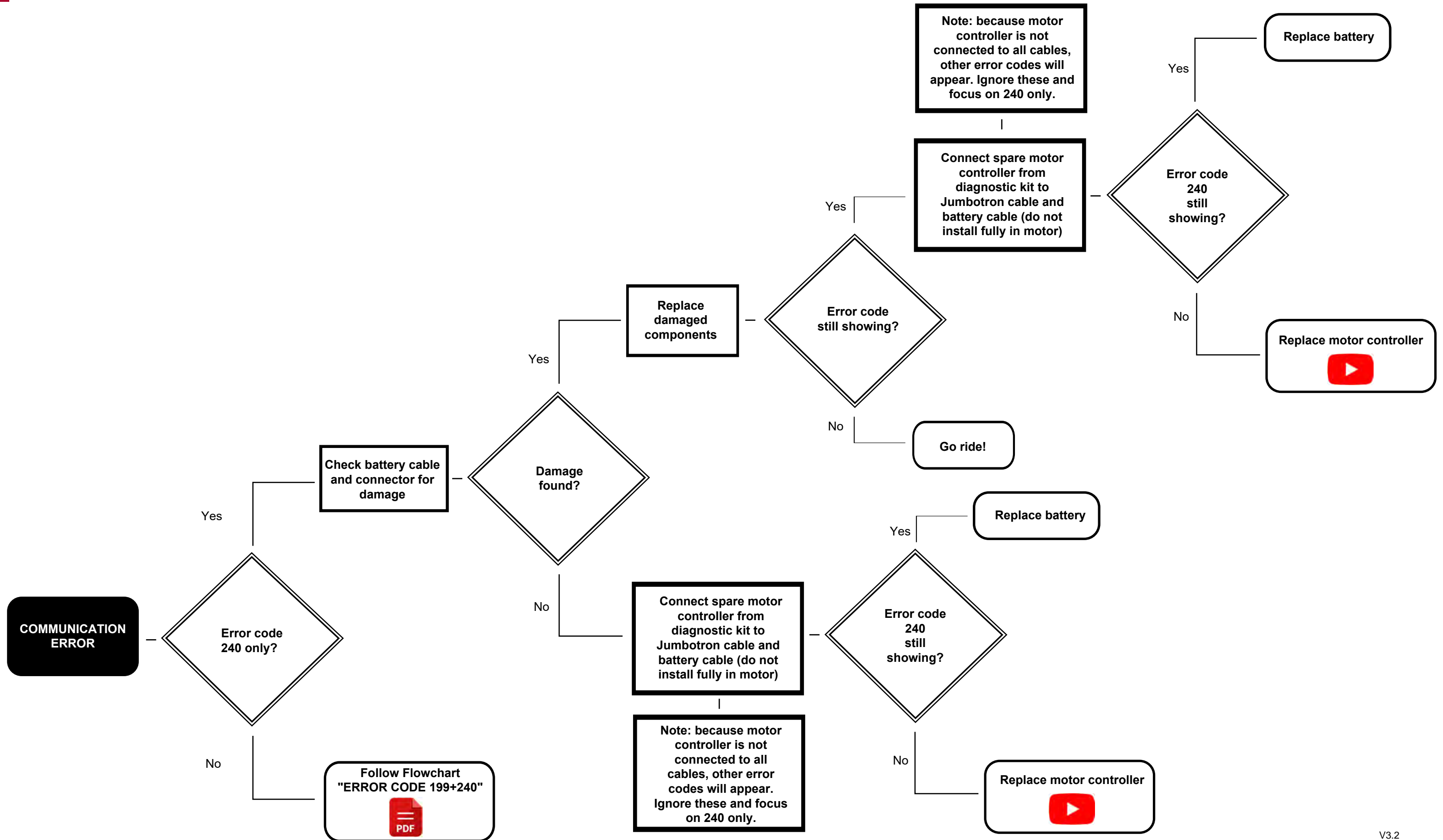
# ERROR CODE 220



# ERROR CODE 230



# ERROR CODE 240



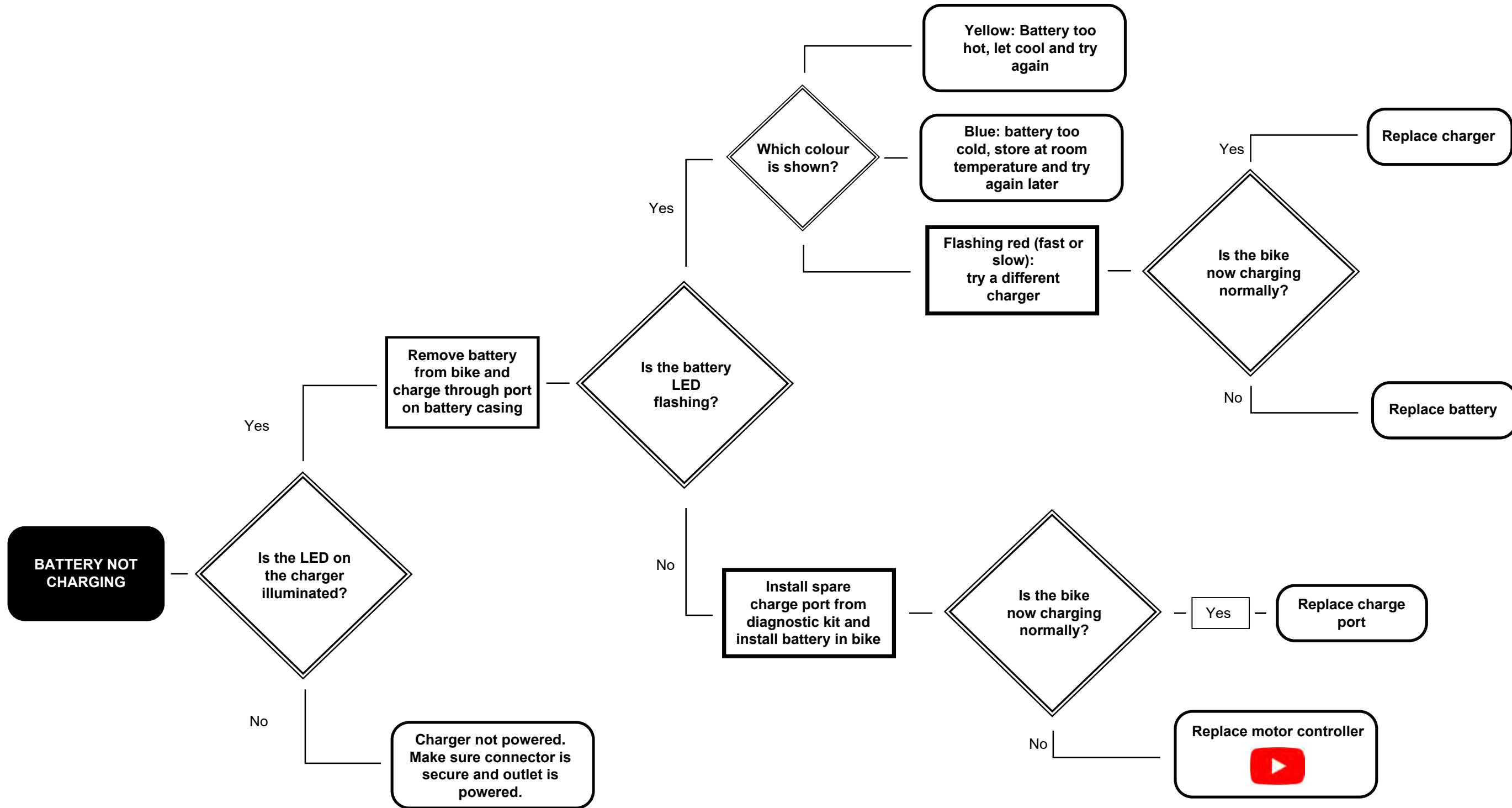


# ERROR CODE 252

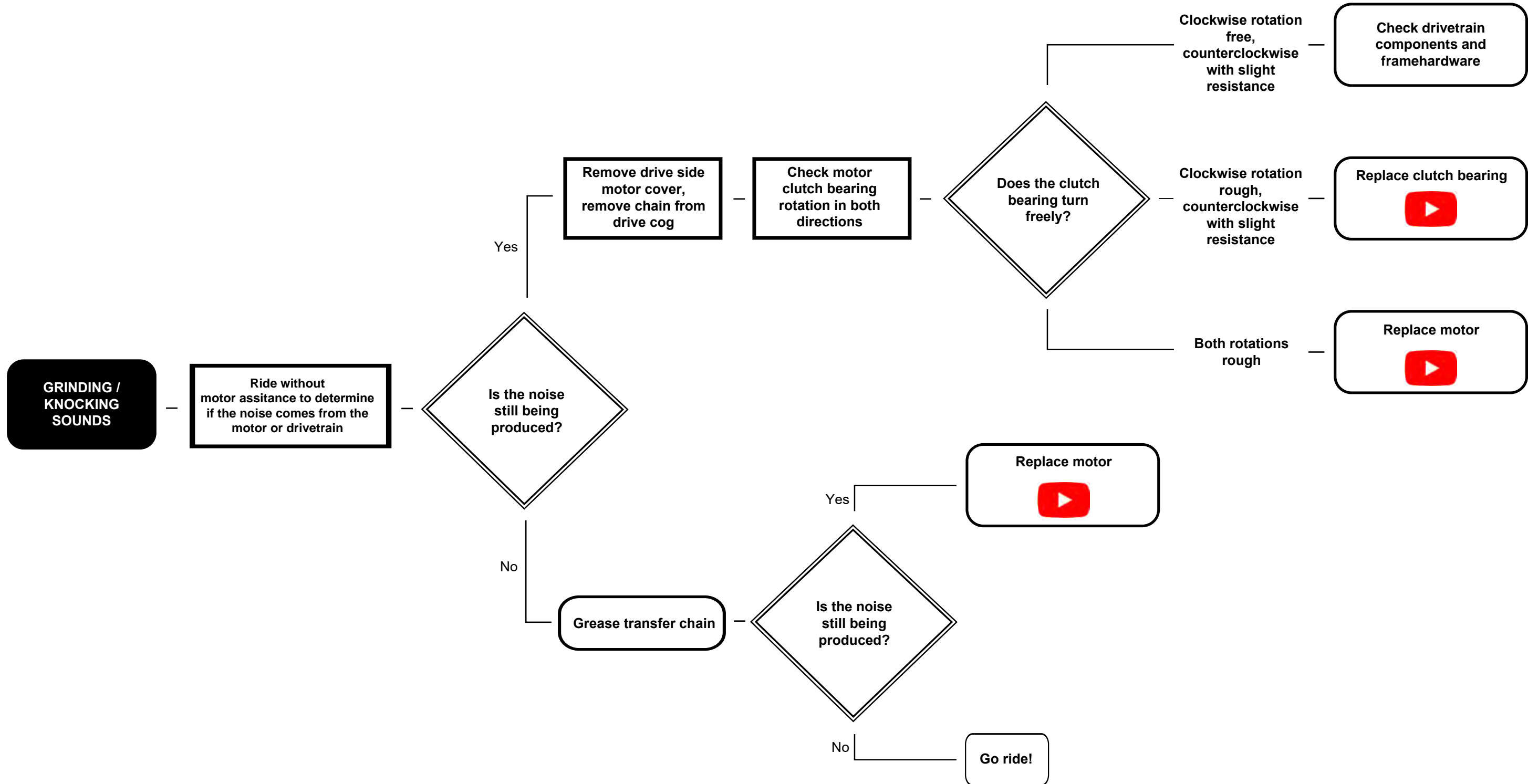
Battery temperature warning

Battery temp. is below  
-10°C Range can be  
reduced

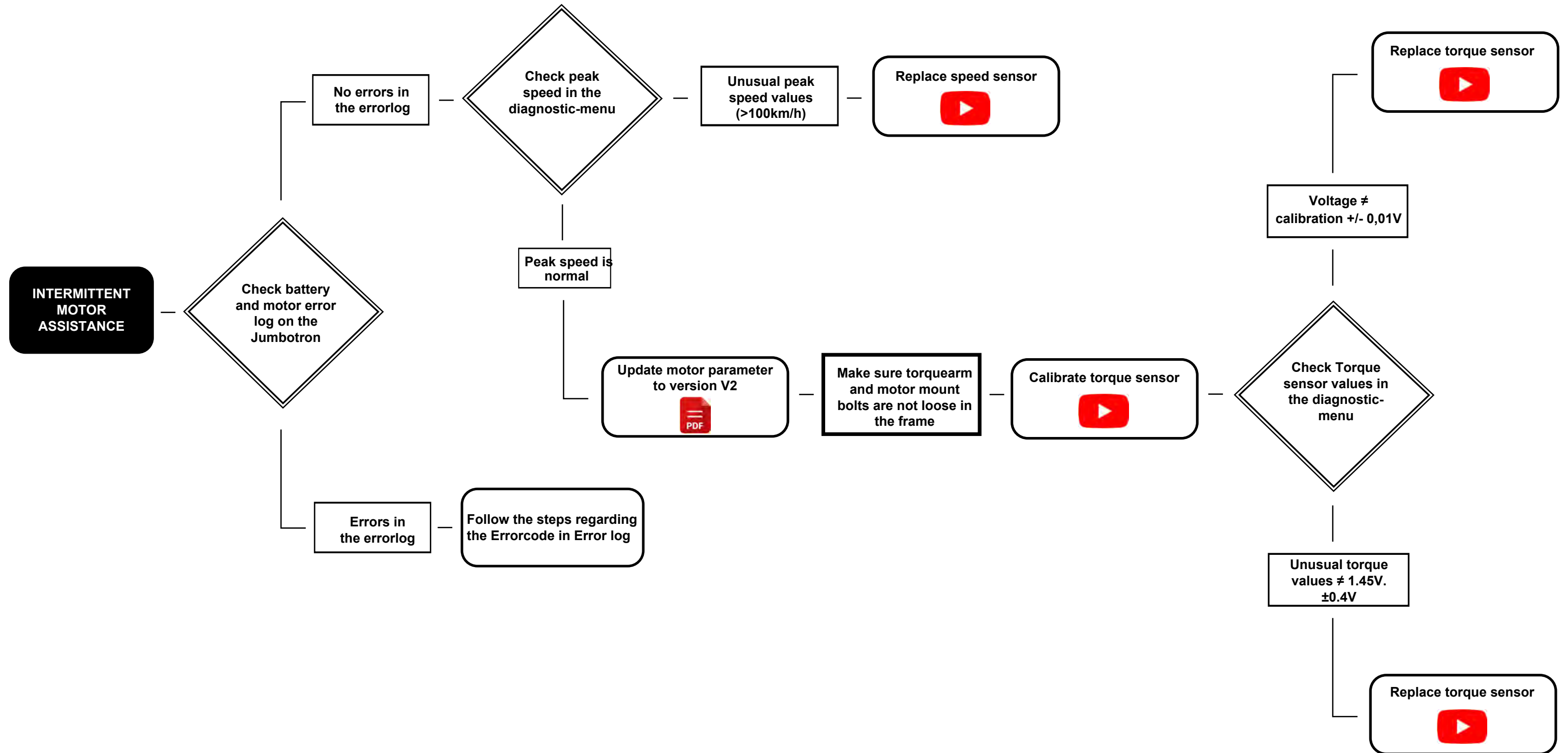
# Battery not charging



# Grinding / knocking sounds



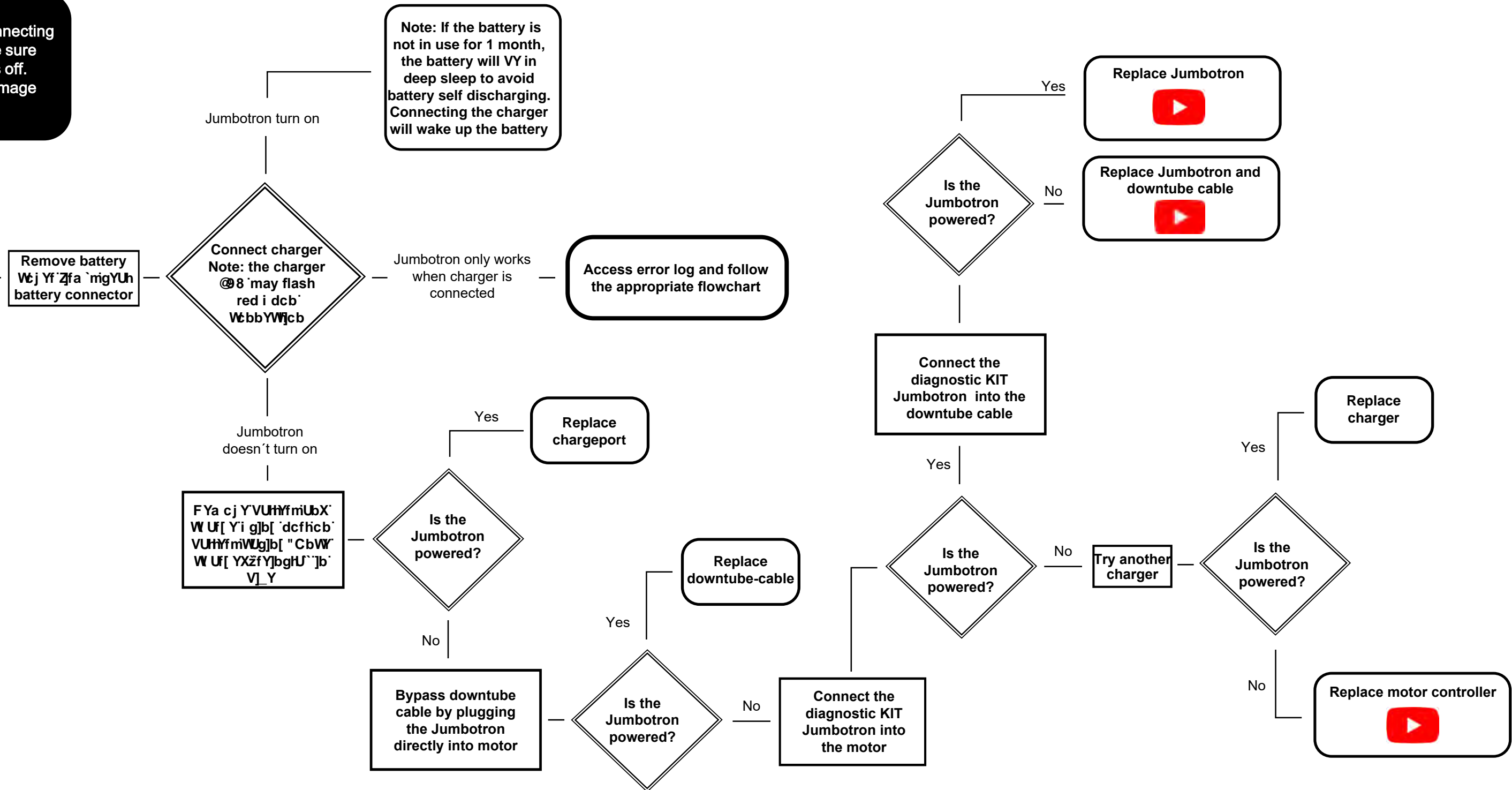
# Intermittent motor assistance



# Jumbotron doesn't turn on, no motor assistance

**NOTE:** Before disconnecting the Jumbotron, make sure that the Jumbotron is off. Otherwise, it may damage the Jumbotron

**JUMBOTRON DOESN'T TURN ON, NO MOTOR ASSISTANCE**

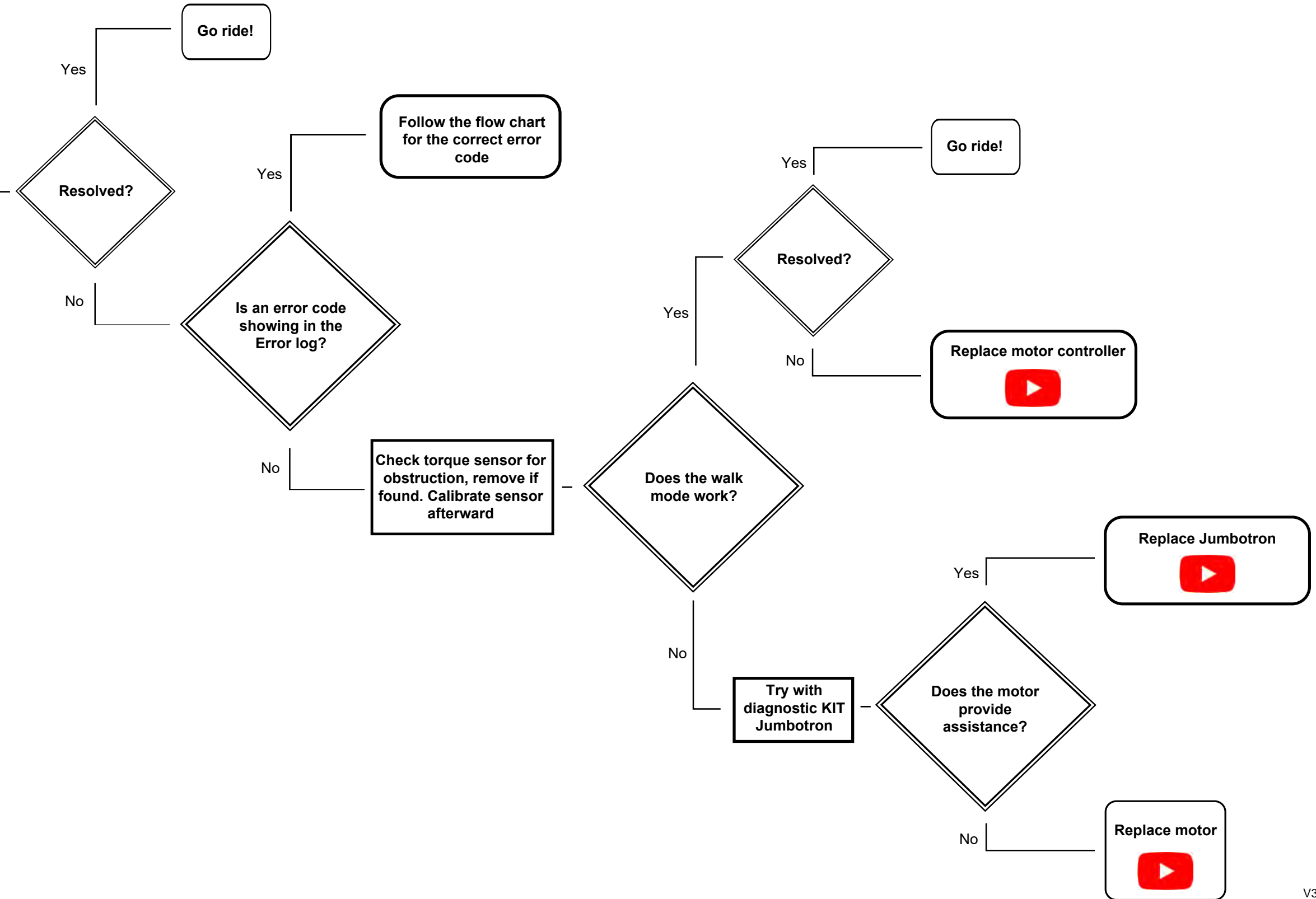


# Jumbotron powered, no motor assistance, no error code

**NOTE:** Before disconnecting the Jumbotron, make sure that the Jumbotron is off. Otherwise, it may damage the Jumbotron

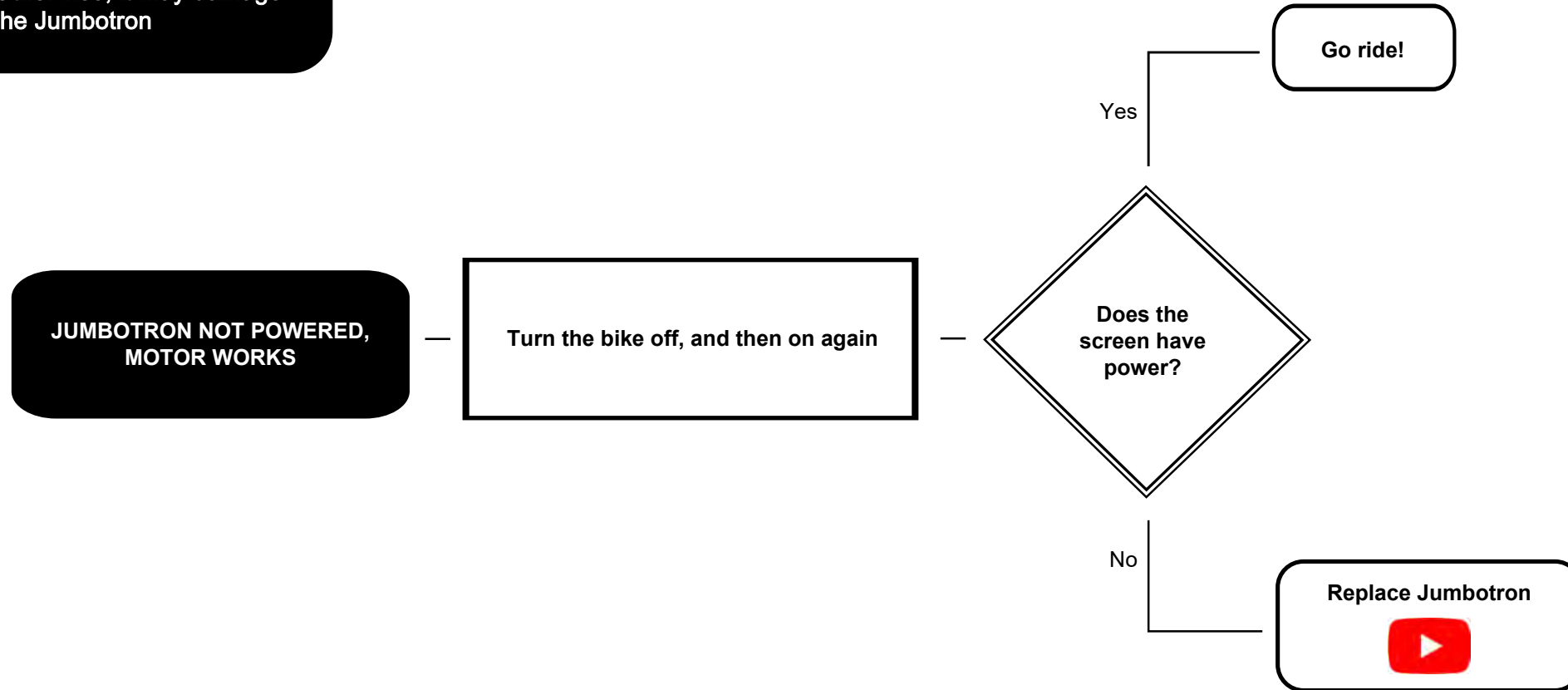
**JUMBOTRON POWERED  
NO ASSISTANCE,  
NO ERROR**

Remove load from pedals and turn bike off, then on again



# Jumbotron screen not powered, motor works

**NOTE:** Before disconnecting the Jumbotron, make sure that the Jumbotron is off. Otherwise, it may damage the Jumbotron



# Reduced range

