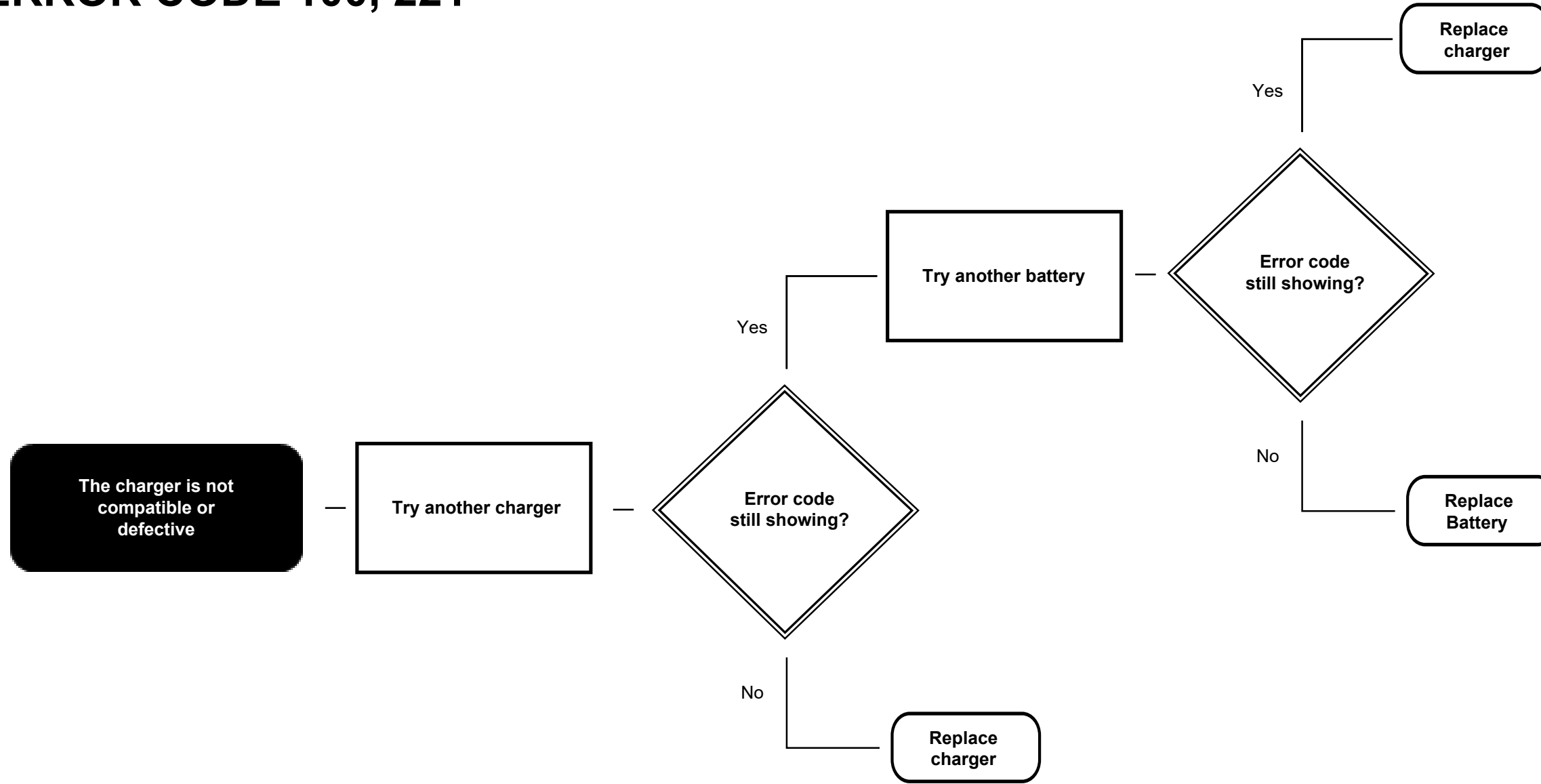


Rocky Mountain Bicycles Dynamometer 4.0 Troubleshooting

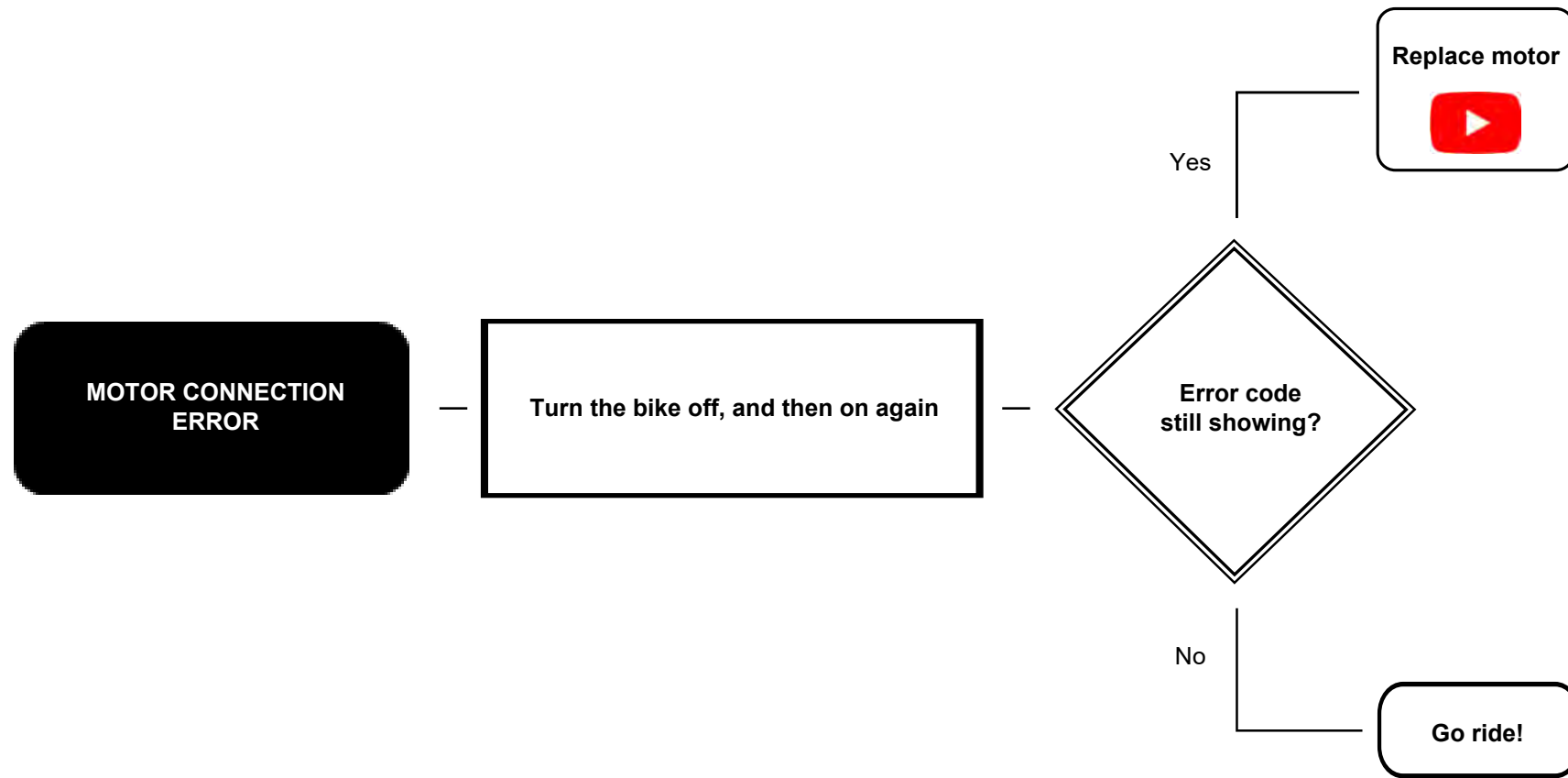
V3.5 October 2023



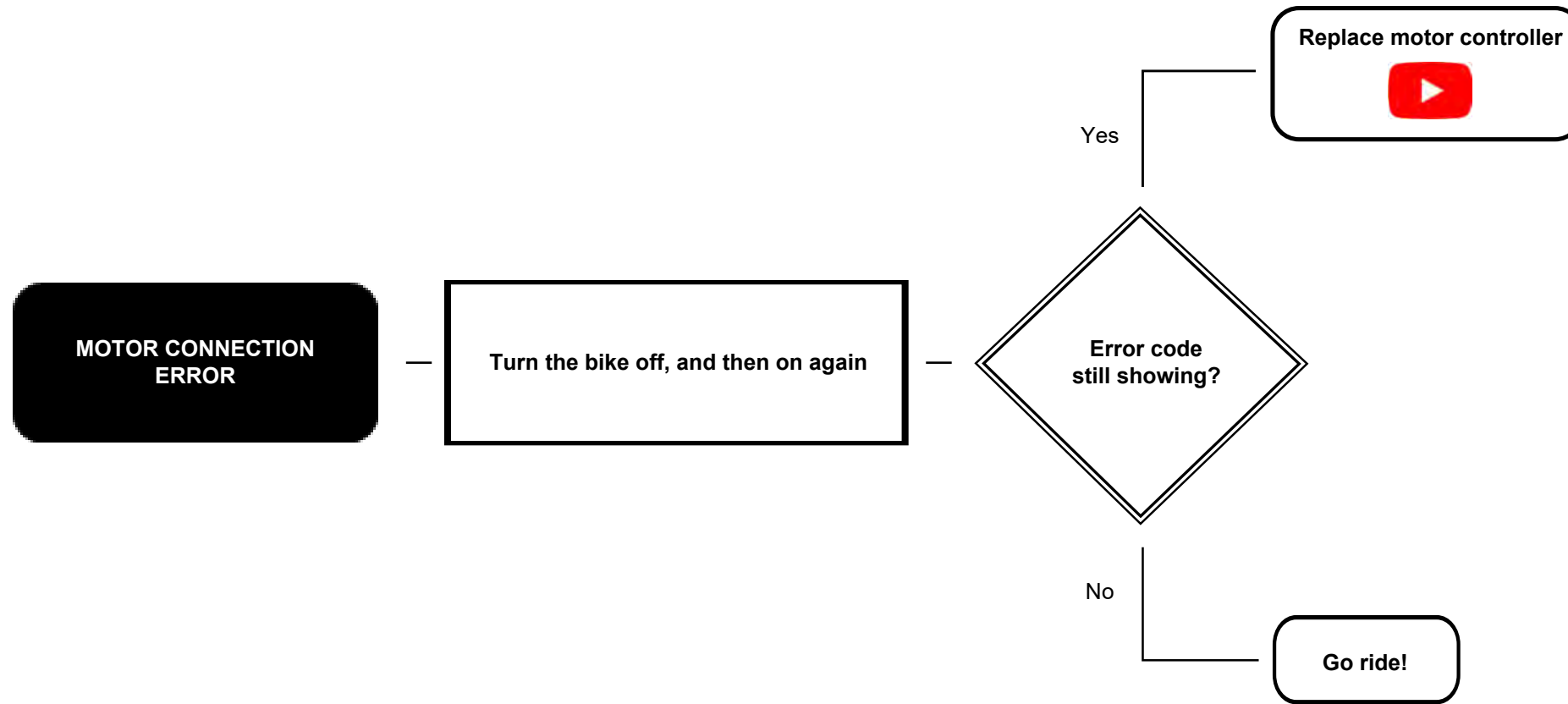
ERROR CODE 100, 221



ERROR CODE 103, 121, 127, 177, 178



ERROR CODE 106, 109, 136, 139, 169, 176

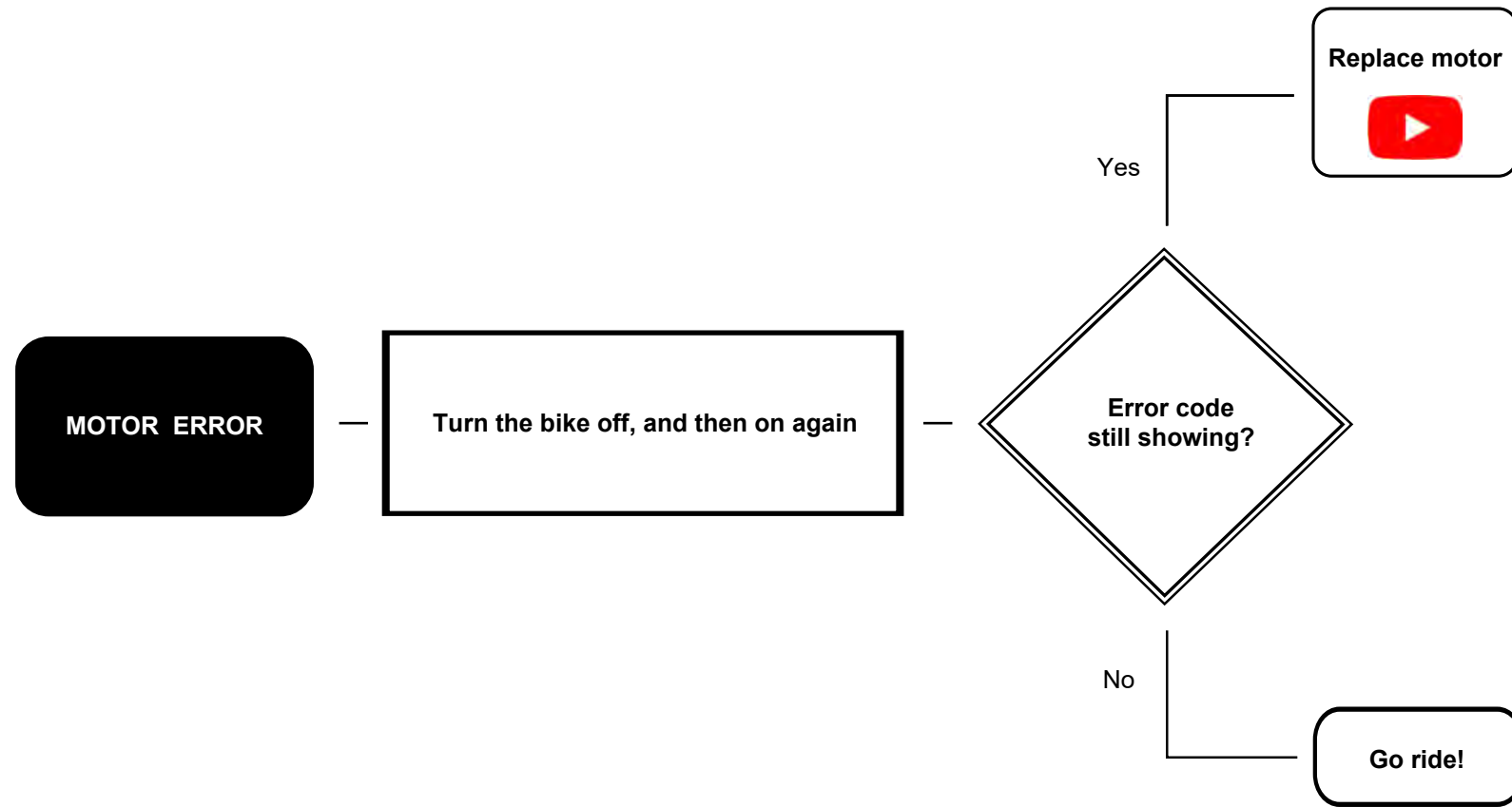


ERROR CODE 112

Motorcontroller is too hot and shuts off

Motor controller needs to cool down below 100°C

ERROR CODE 115, 185, 186



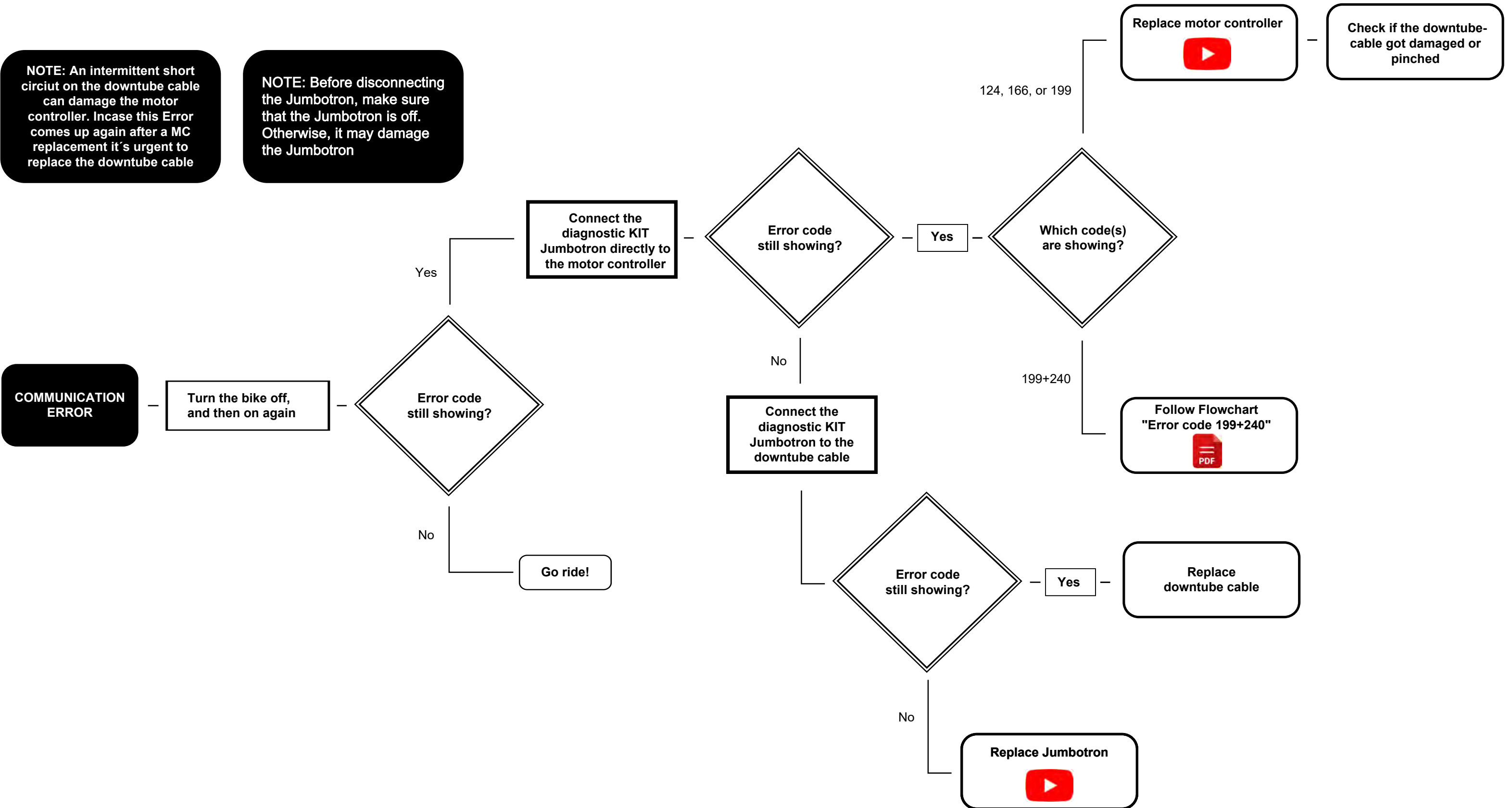
ERROR CODE 118, 181, 184



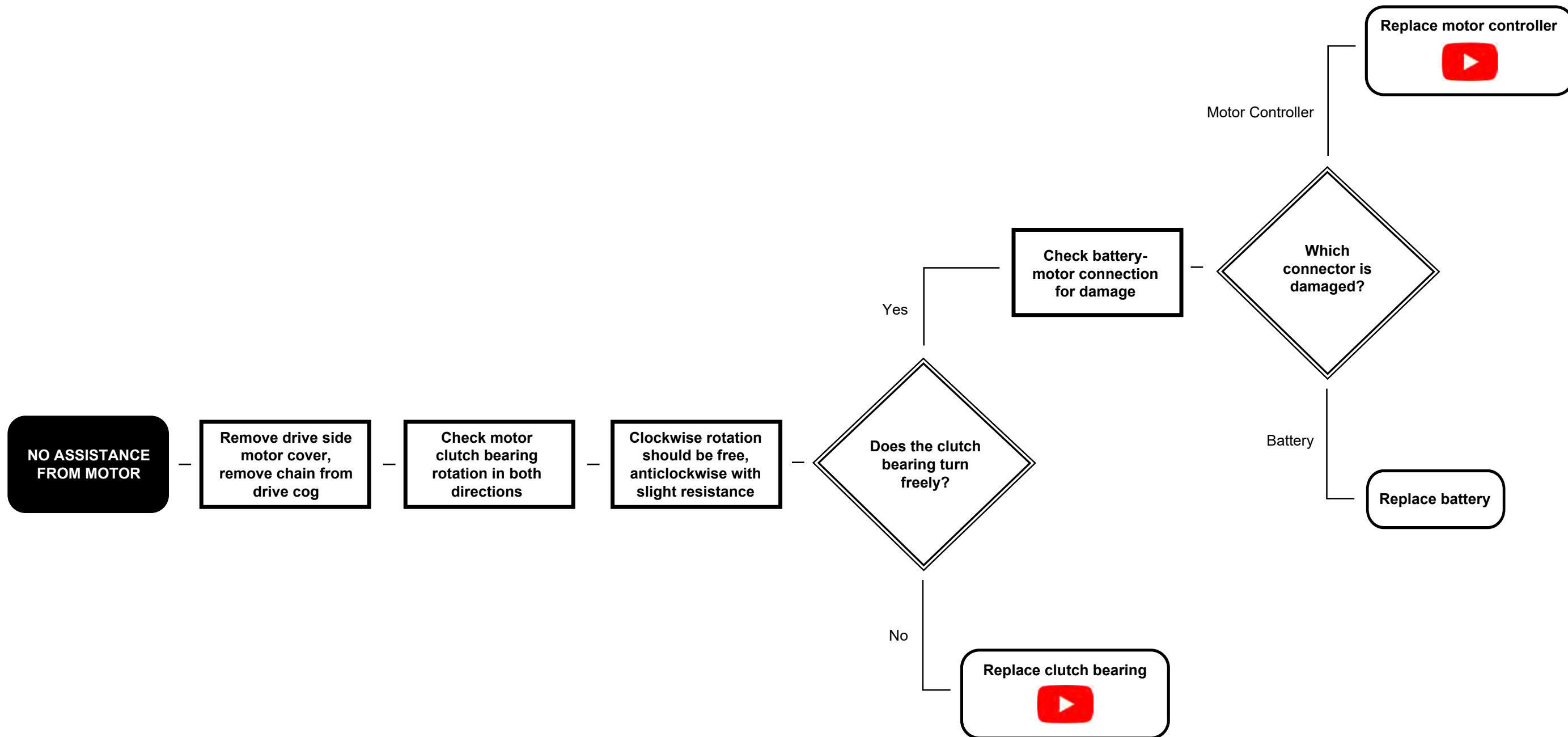
ERROR CODE 124, 166, 199

NOTE: An intermittent short circuit on the downtube cable can damage the motor controller. In case this Error comes up again after a MC replacement it's urgent to replace the downtube cable

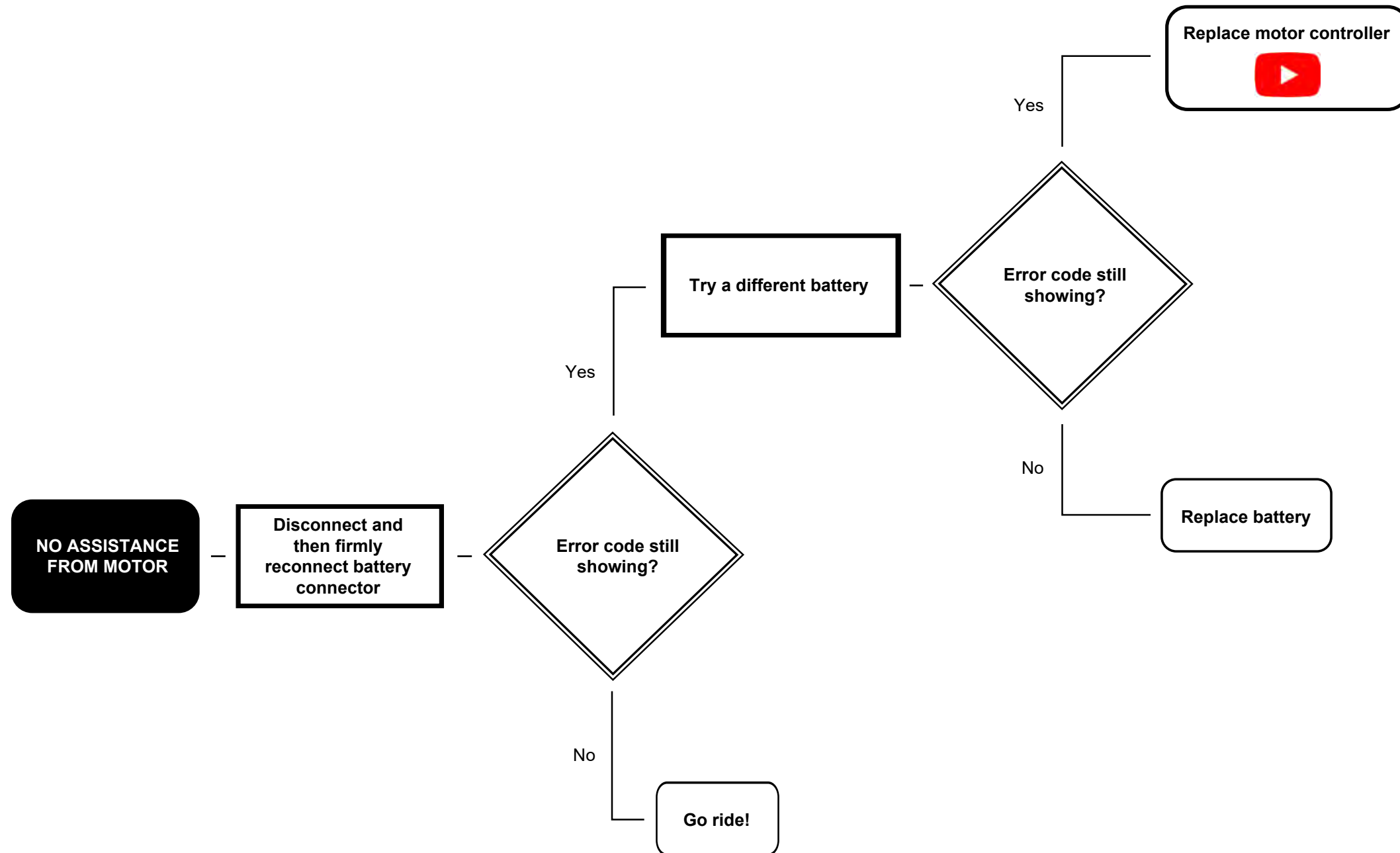
NOTE: Before disconnecting the Jumbotron, make sure that the Jumbotron is off. Otherwise, it may damage the Jumbotron



ERROR CODE 133



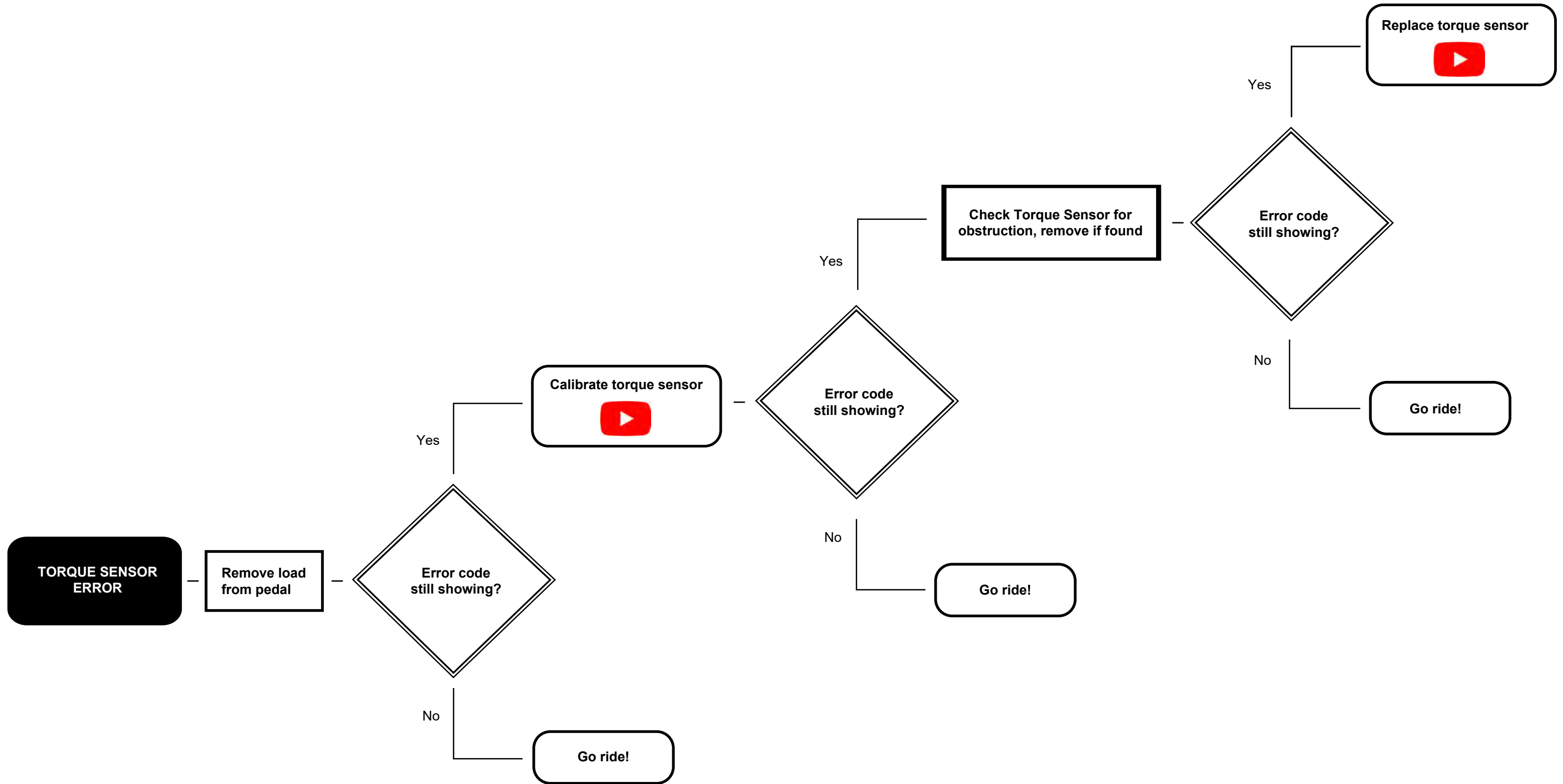
ERROR CODE 142



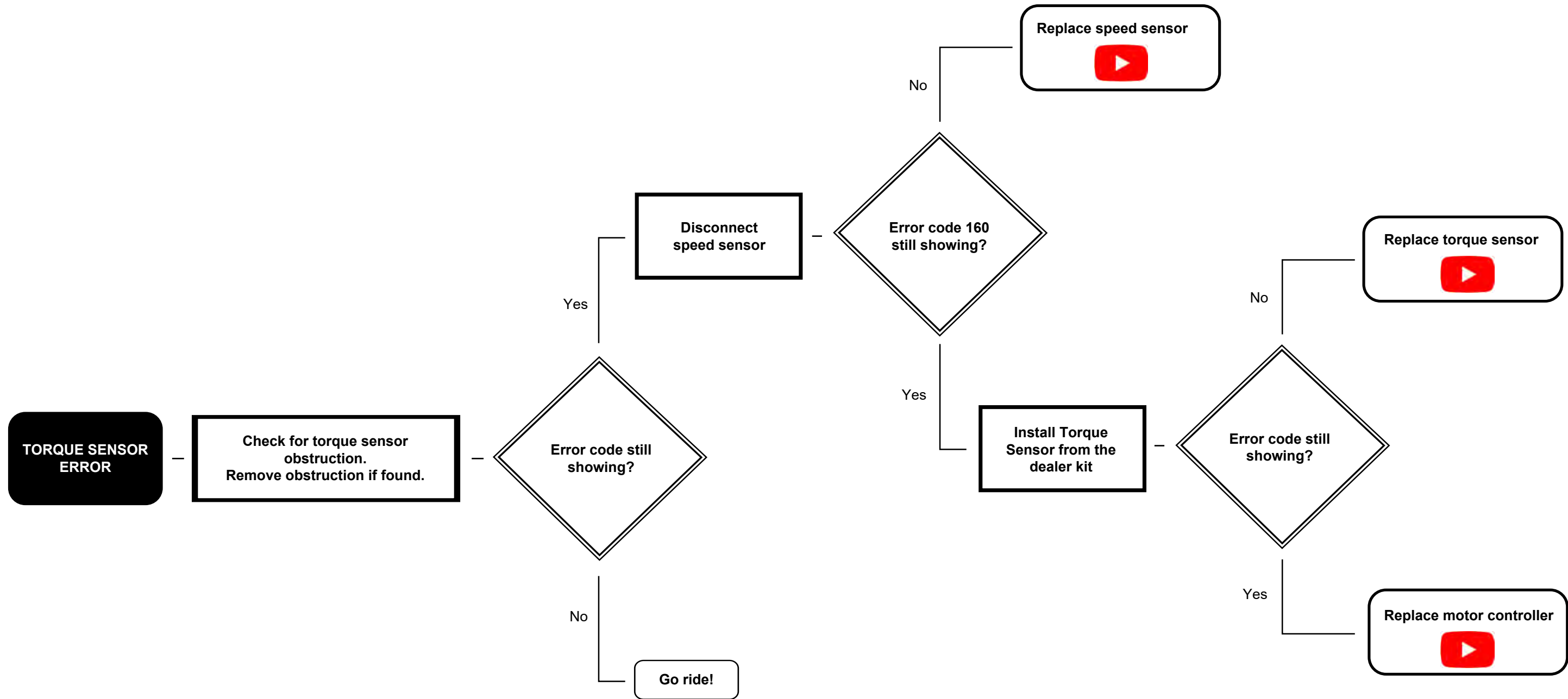
ERROR CODE 145, 148, 151



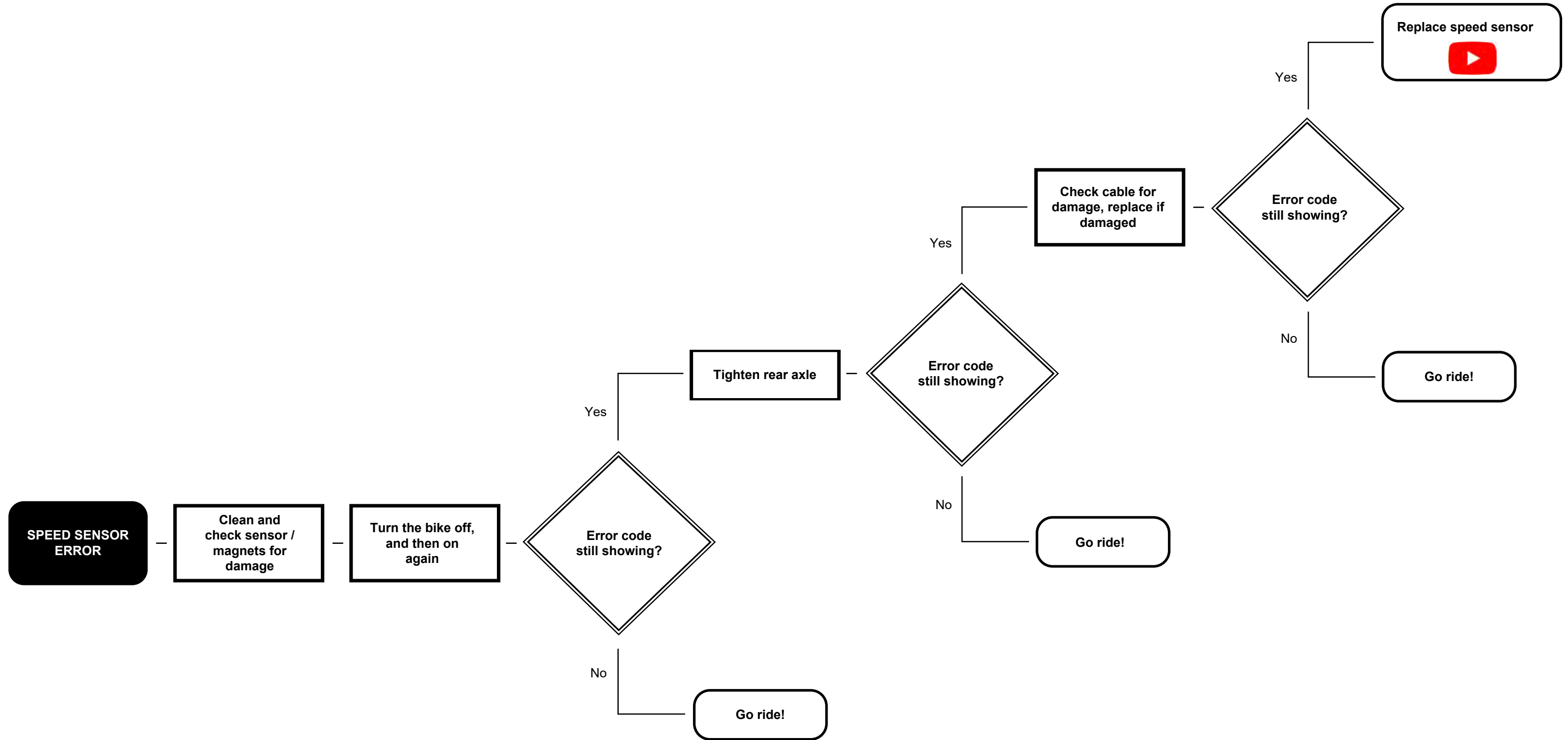
ERROR CODE 157



ERROR CODE 160



ERROR CODE 180, 189



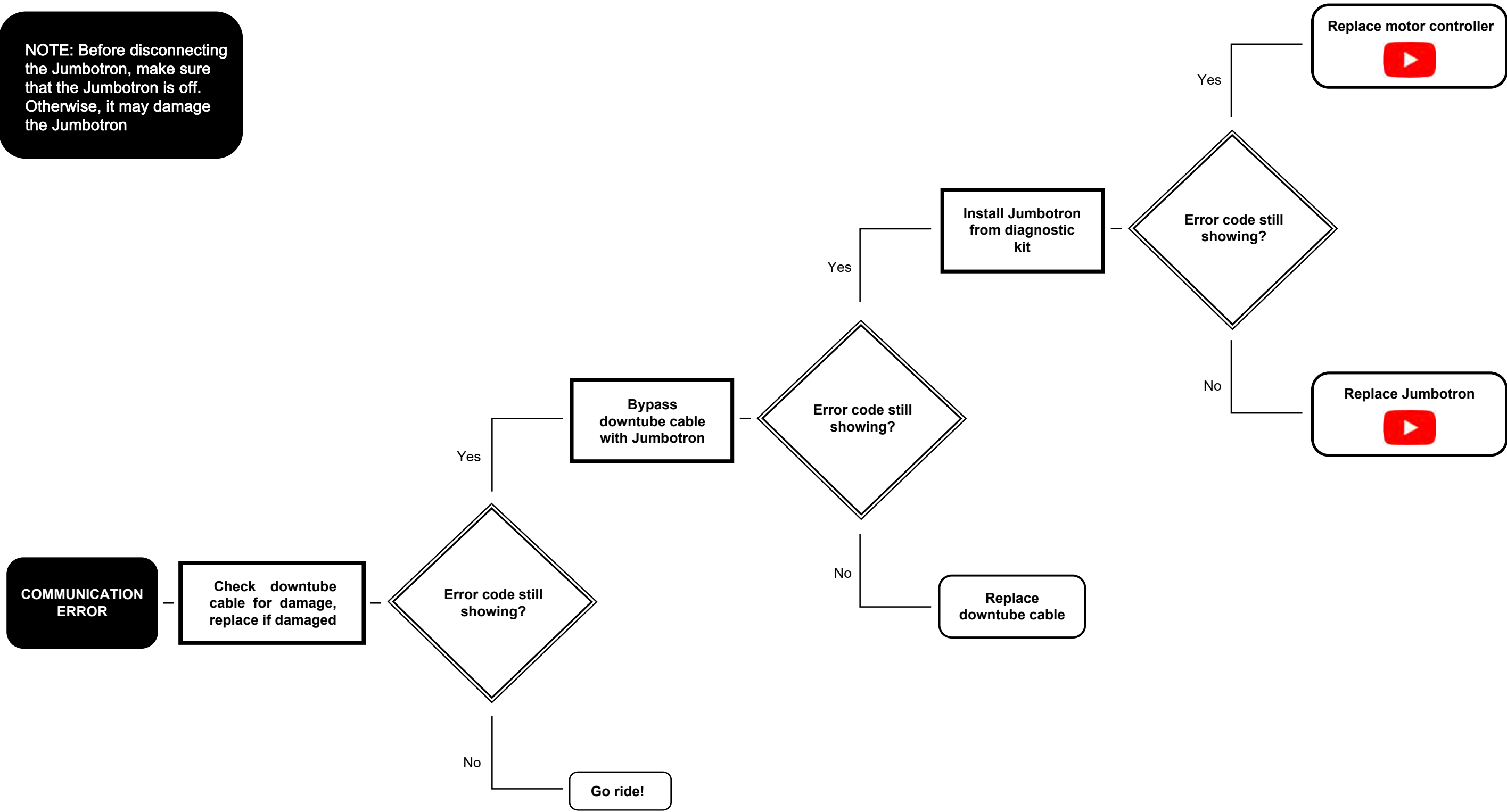
ERROR CODE 183

Motor controller
overheating warning

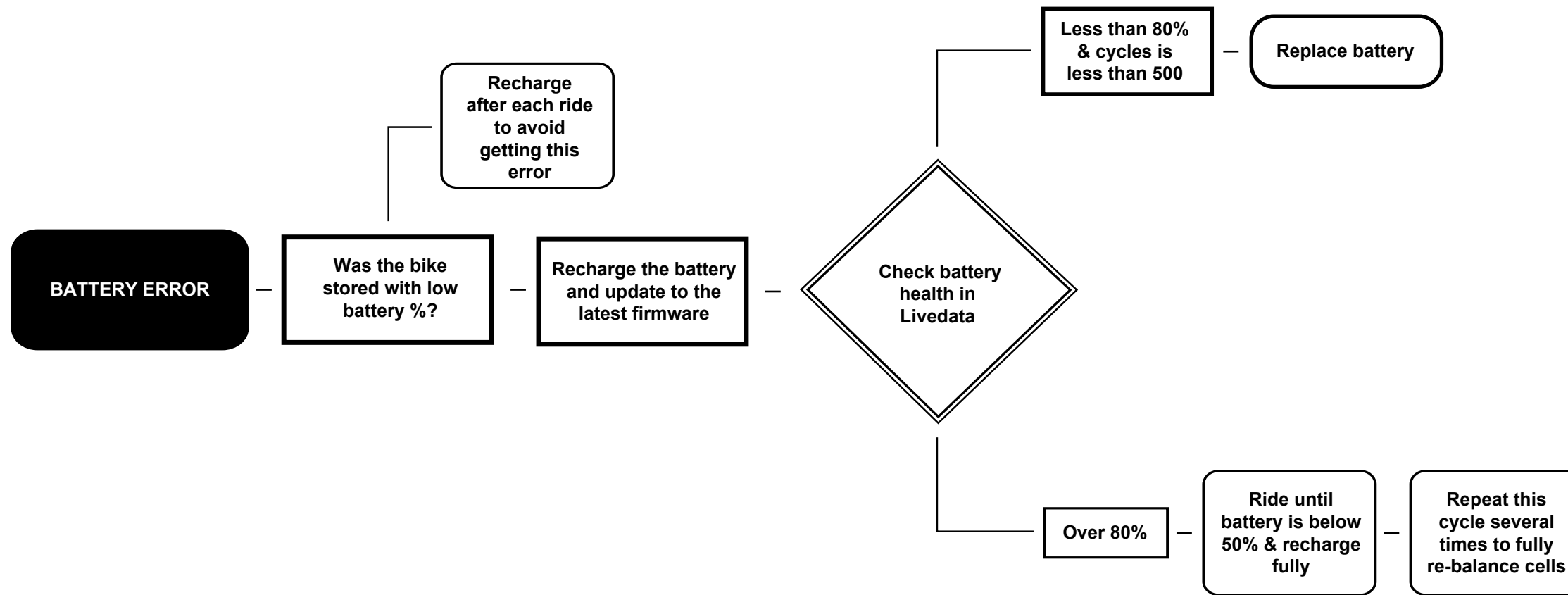
Adjust riding until temp.
is below 80°C motor
power is reduced above
80°C

ERROR CODE 199+240

NOTE: Before disconnecting the Jumbotron, make sure that the Jumbotron is off. Otherwise, it may damage the Jumbotron



ERROR CODE 201, 205



ERROR CODE 210

Battery temperature is too hot

Main battery is too hot. Normal function will resume below 60°C

ERROR CODE 212

Battery temperature is too low

Battery temp. is too low. Normal function will resume at -15°C

ERROR CODE 214

Battery temperature is too low

Battery temp. is too low to recharge.
Charging will resume at 3°C

ERROR CODE 215

Battery Managment System
temperature is too hot

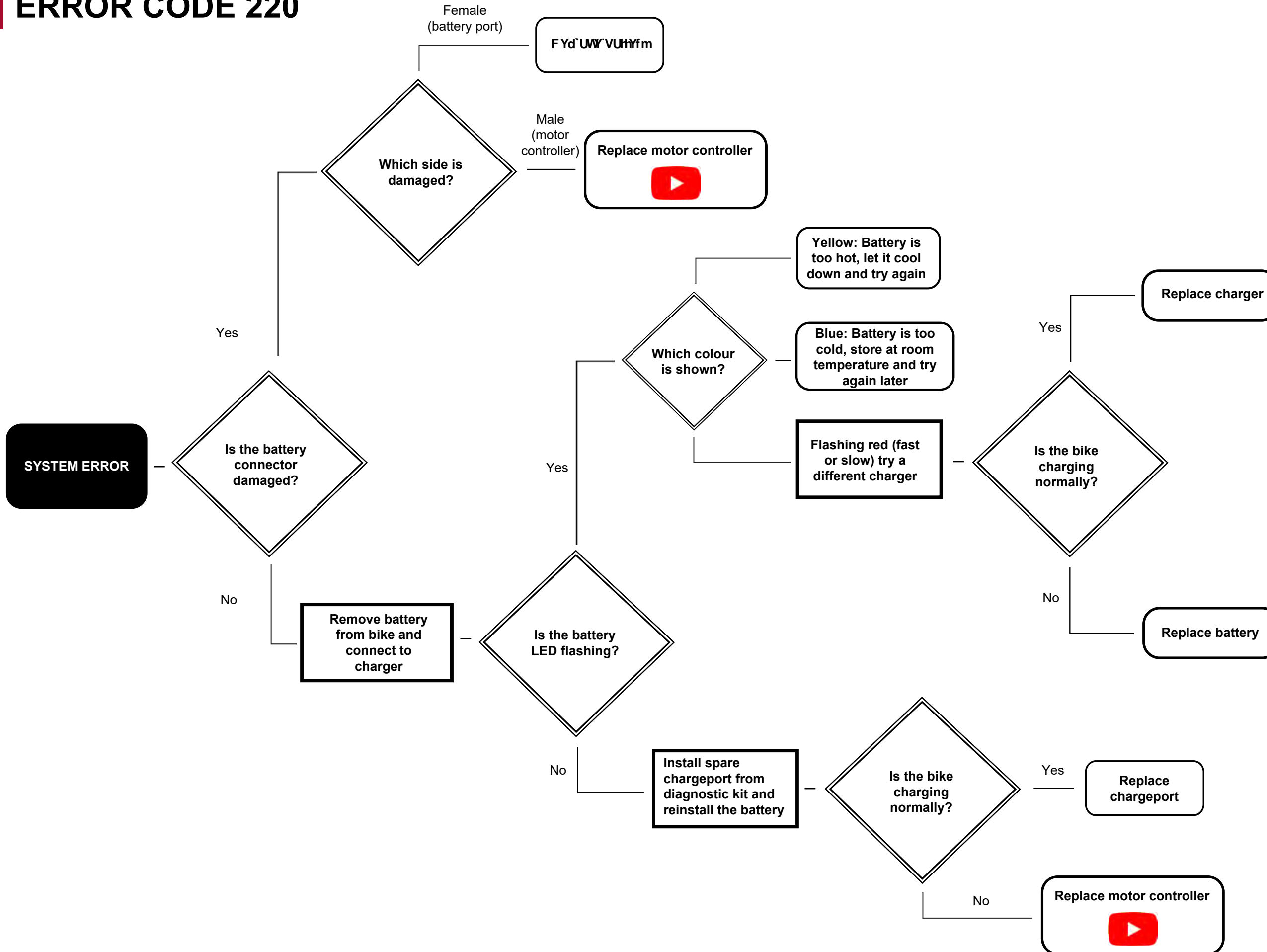
Main battery BMS
is too hot. Normal
function will
resume below 80°C

ERROR CODE 216

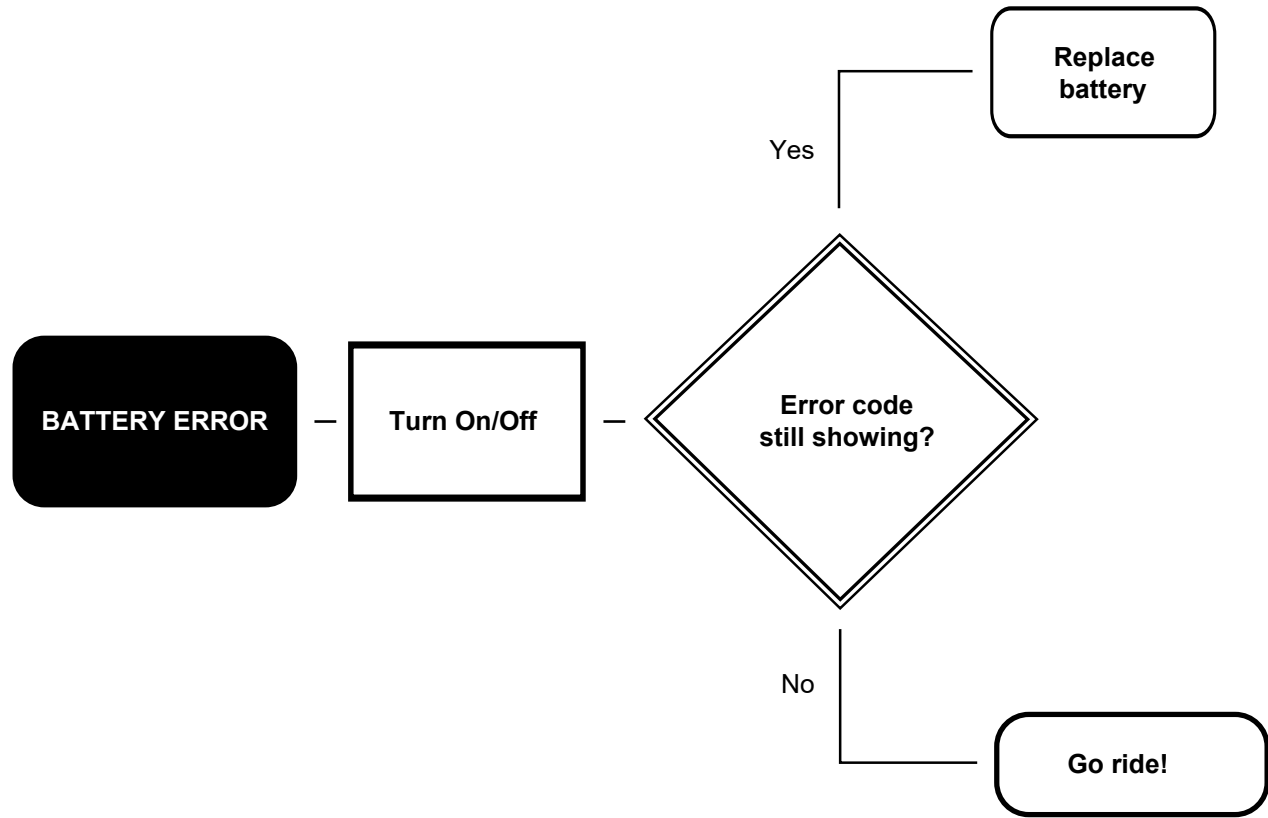
Battery temperature is too hot

Battery temp. is too hot to recharge.
Charging will resume below 45°C

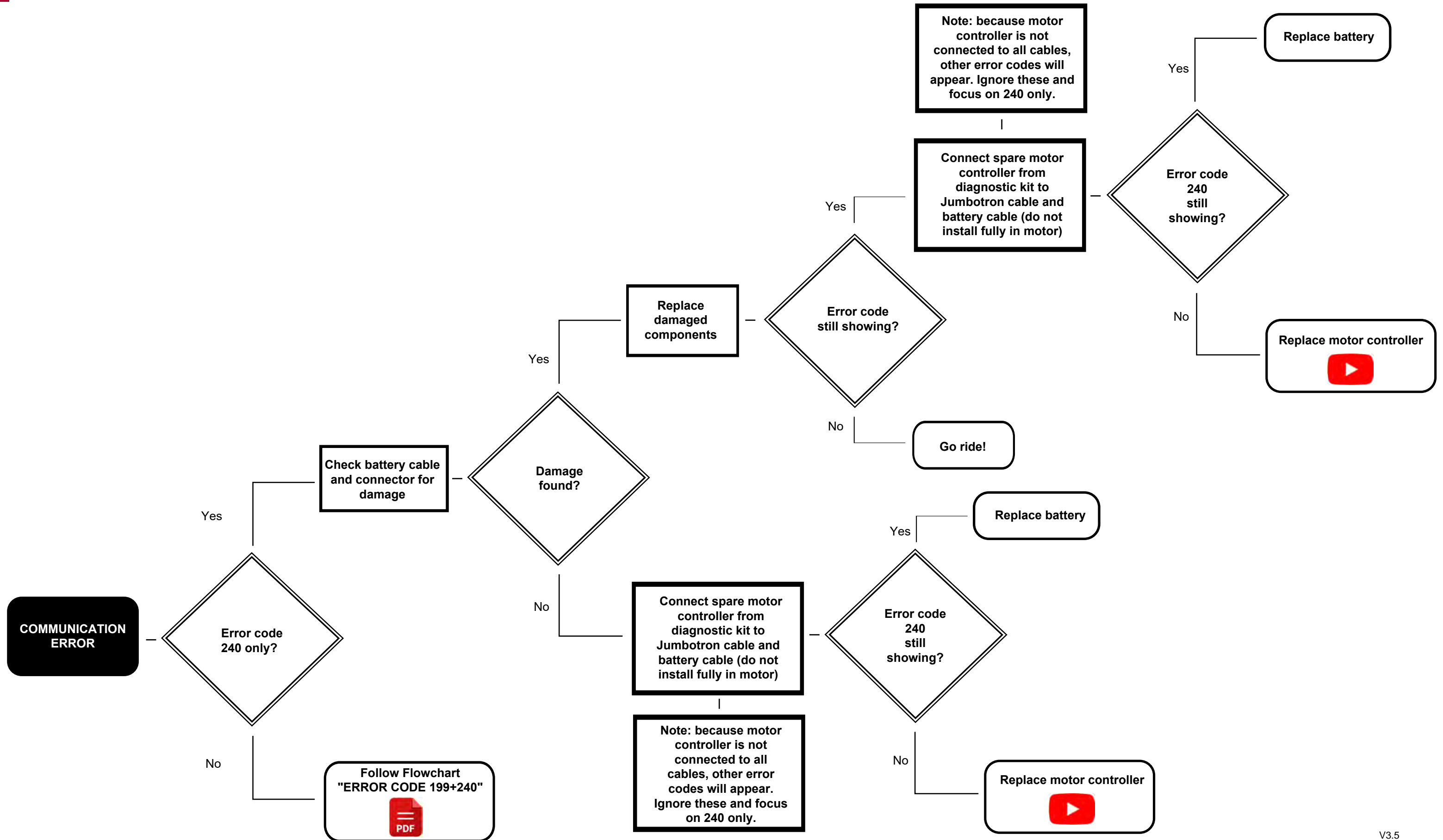
ERROR CODE 220



ERROR CODE 230



ERROR CODE 240

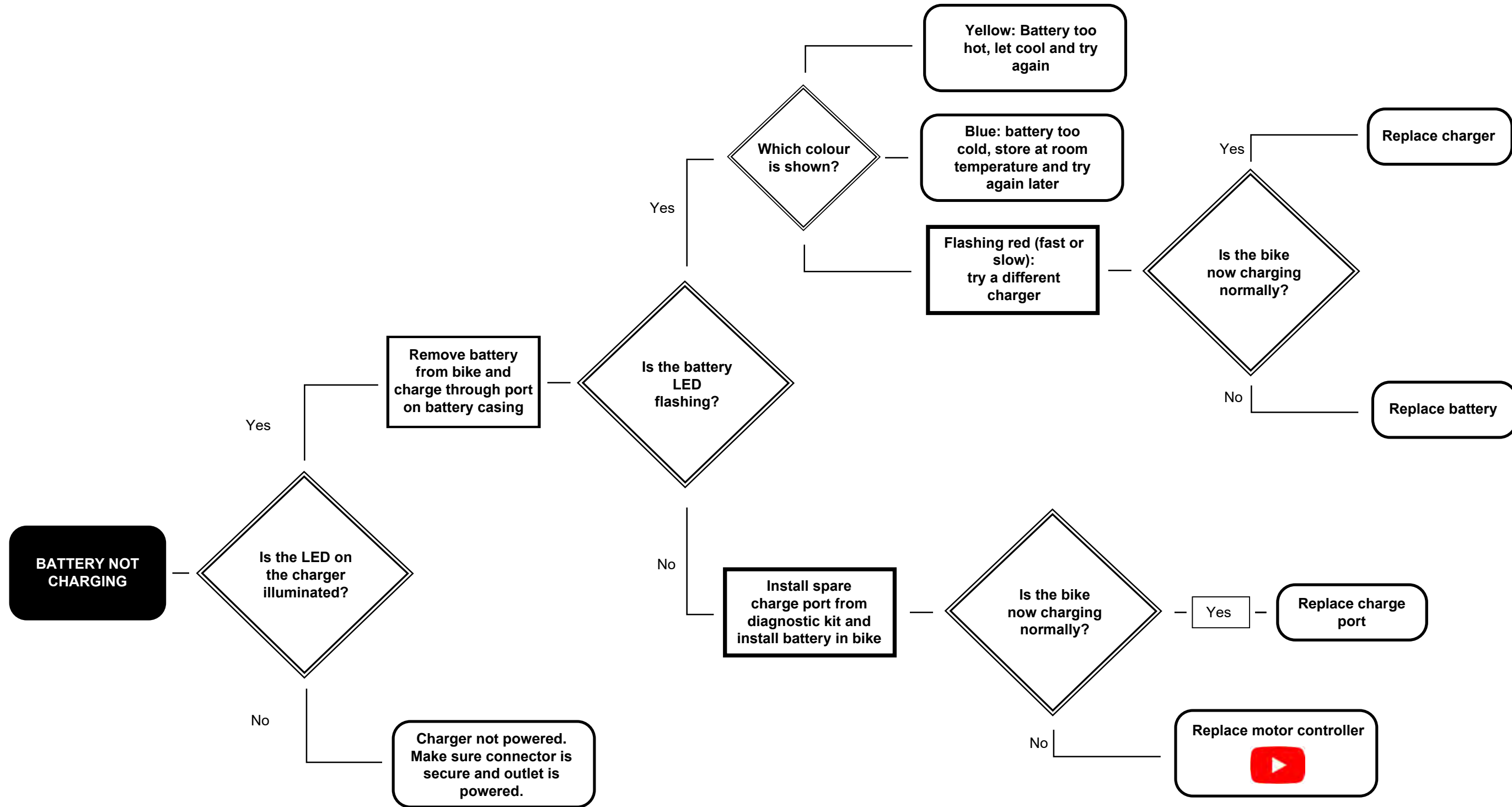


ERROR CODE 252

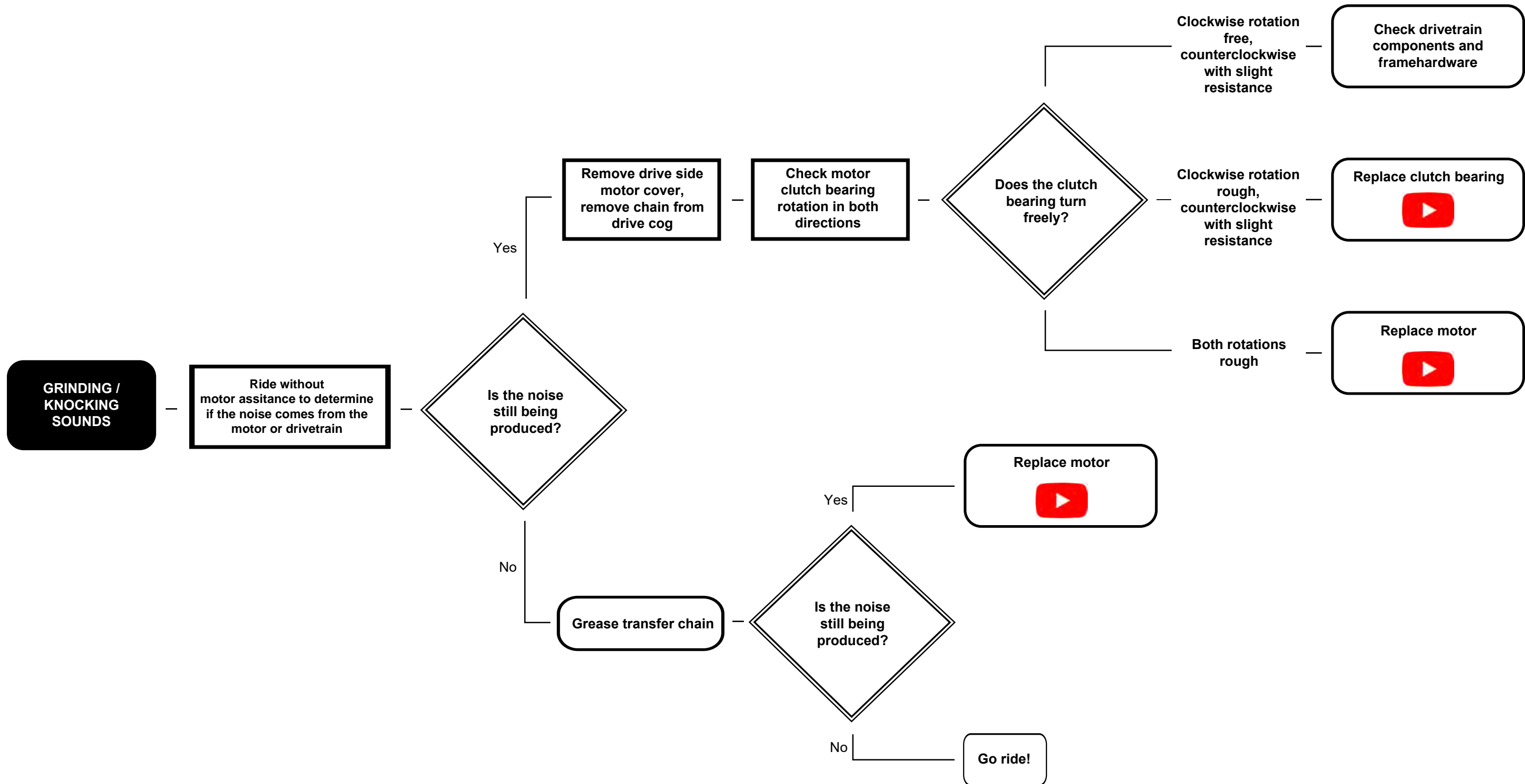
Battery temperature warning

Battery temp. is below
-10°C Range can be
reduced

Battery not charging



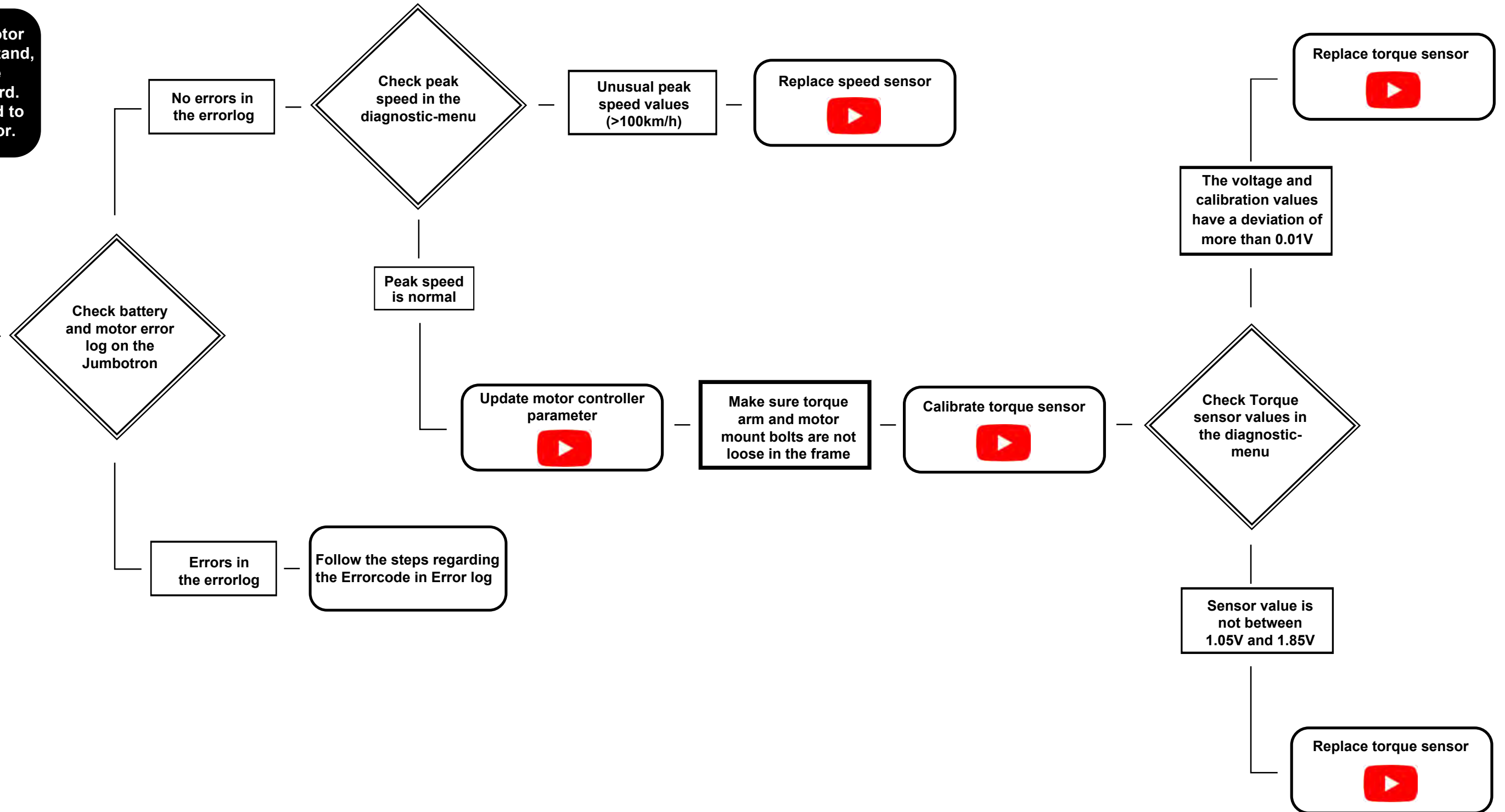
Grinding / knocking sounds



Intermittent motor assistance

Note : To activate the motor while the bike is in the stand, drag the rear brake while turning the cranks forward. Chain tension is required to activate the torque sensor.

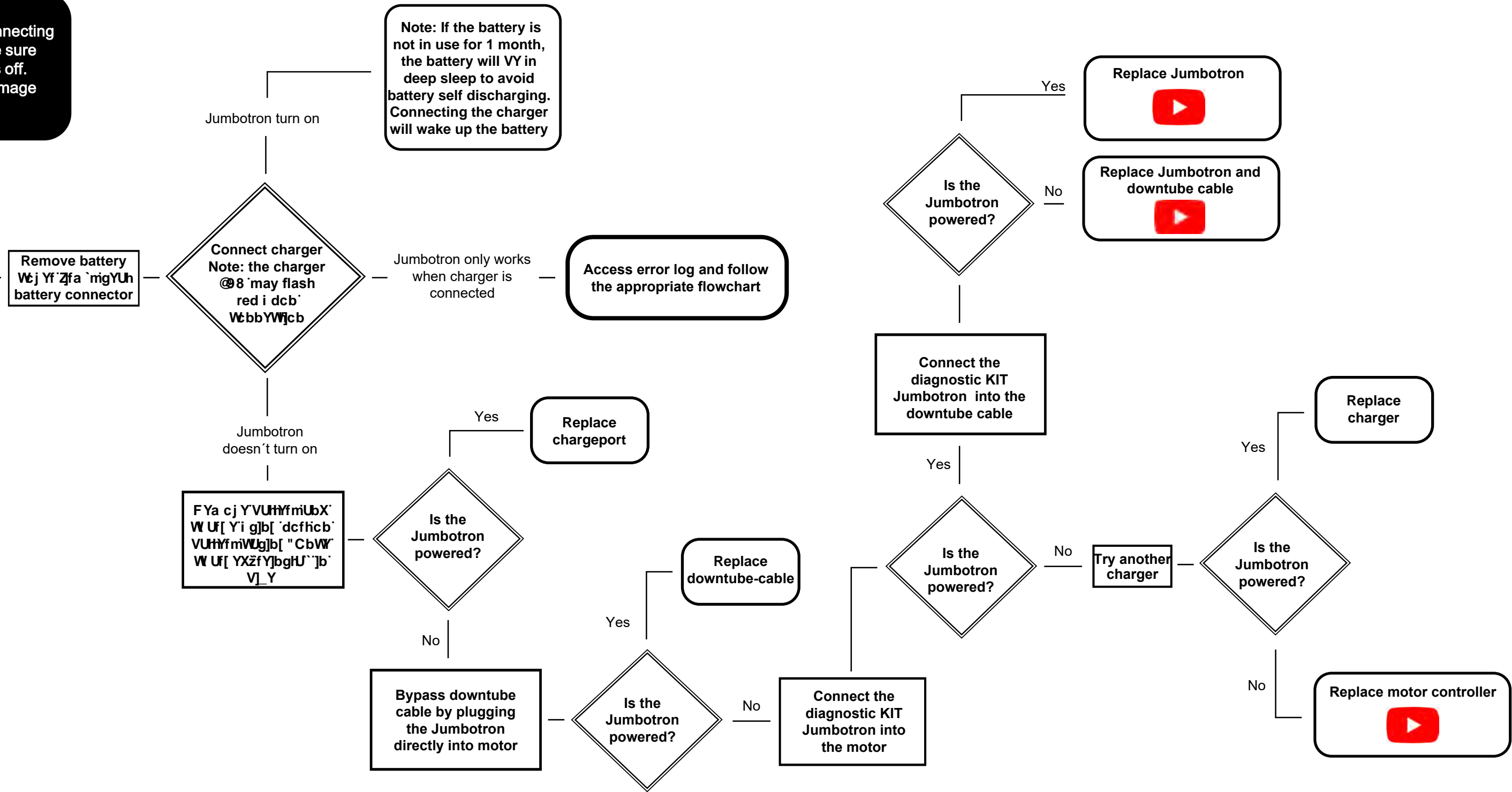
INTERMITTENT MOTOR ASSISTANCE



Jumbotron doesn't turn on, no motor assistance

NOTE: Before disconnecting the Jumbotron, make sure that the Jumbotron is off. Otherwise, it may damage the Jumbotron

JUMBOTRON DOESN'T TURN ON, NO MOTOR ASSISTANCE

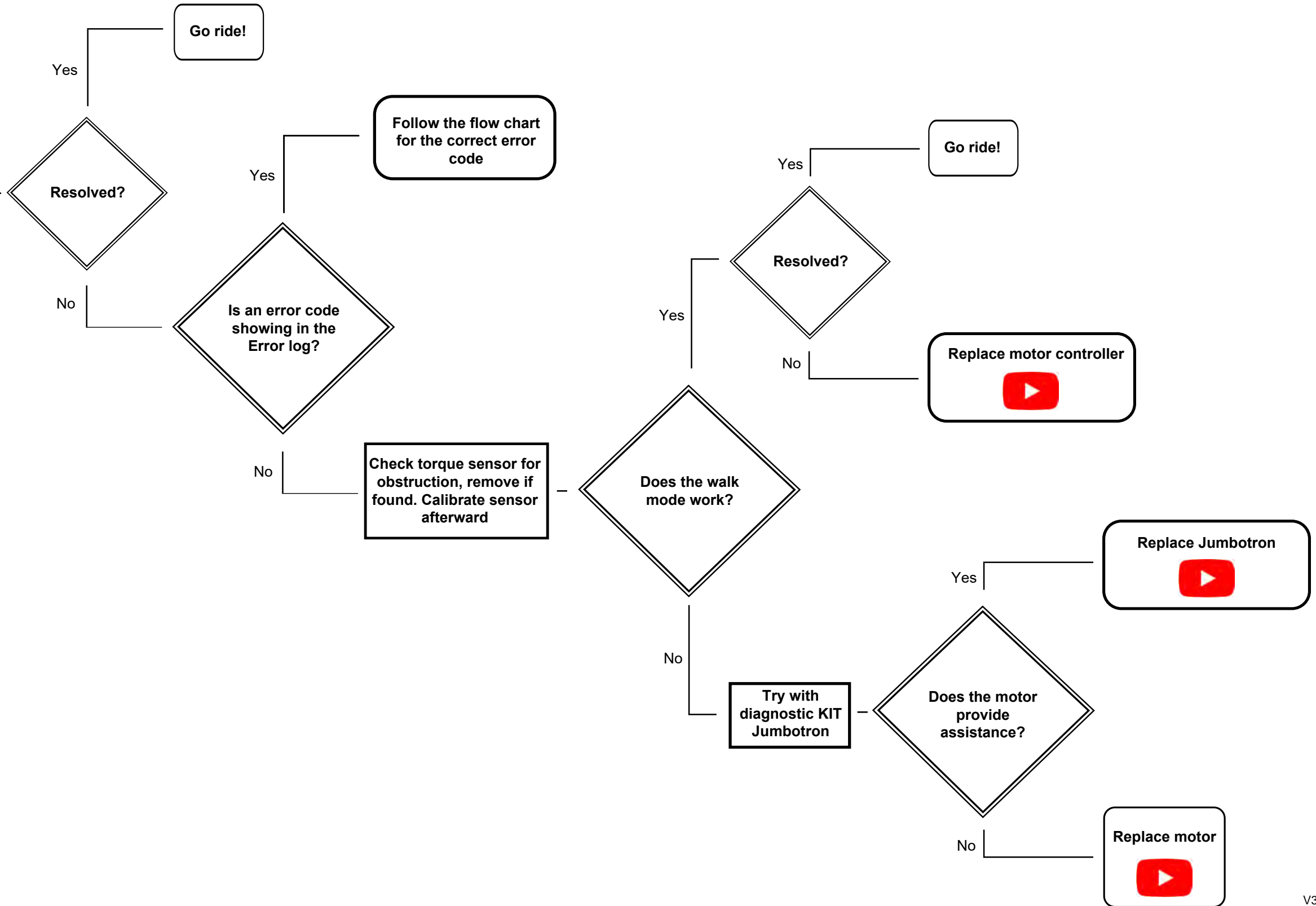


Jumbotron powered, no motor assistance, no error code

NOTE: Before disconnecting the Jumbotron, make sure that the Jumbotron is off. Otherwise, it may damage the Jumbotron

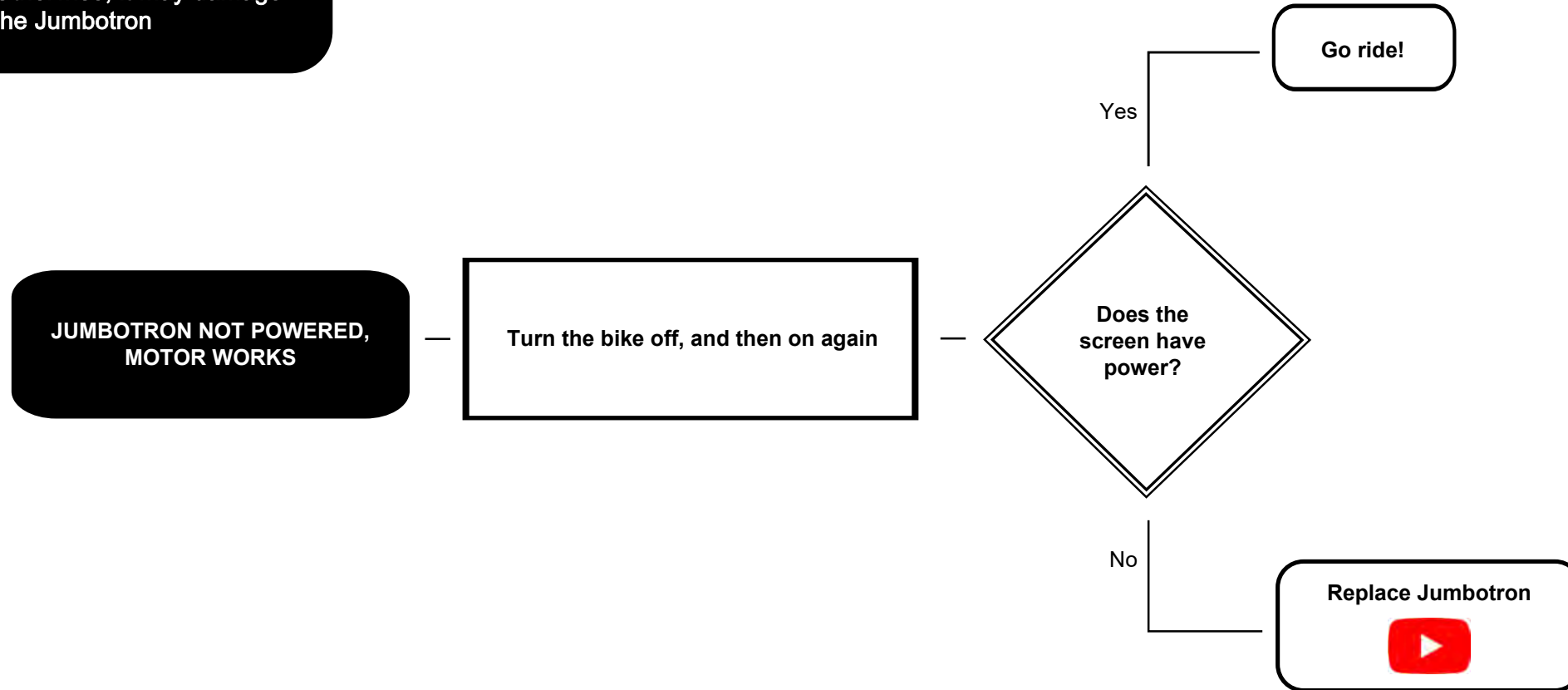
**JUMBOTRON POWERED
NO ASSISTANCE,
NO ERROR**

Remove load from pedals and turn bike off, then on again



Jumbotron screen not powered, motor works

NOTE: Before disconnecting the Jumbotron, make sure that the Jumbotron is off. Otherwise, it may damage the Jumbotron



Reduced range

