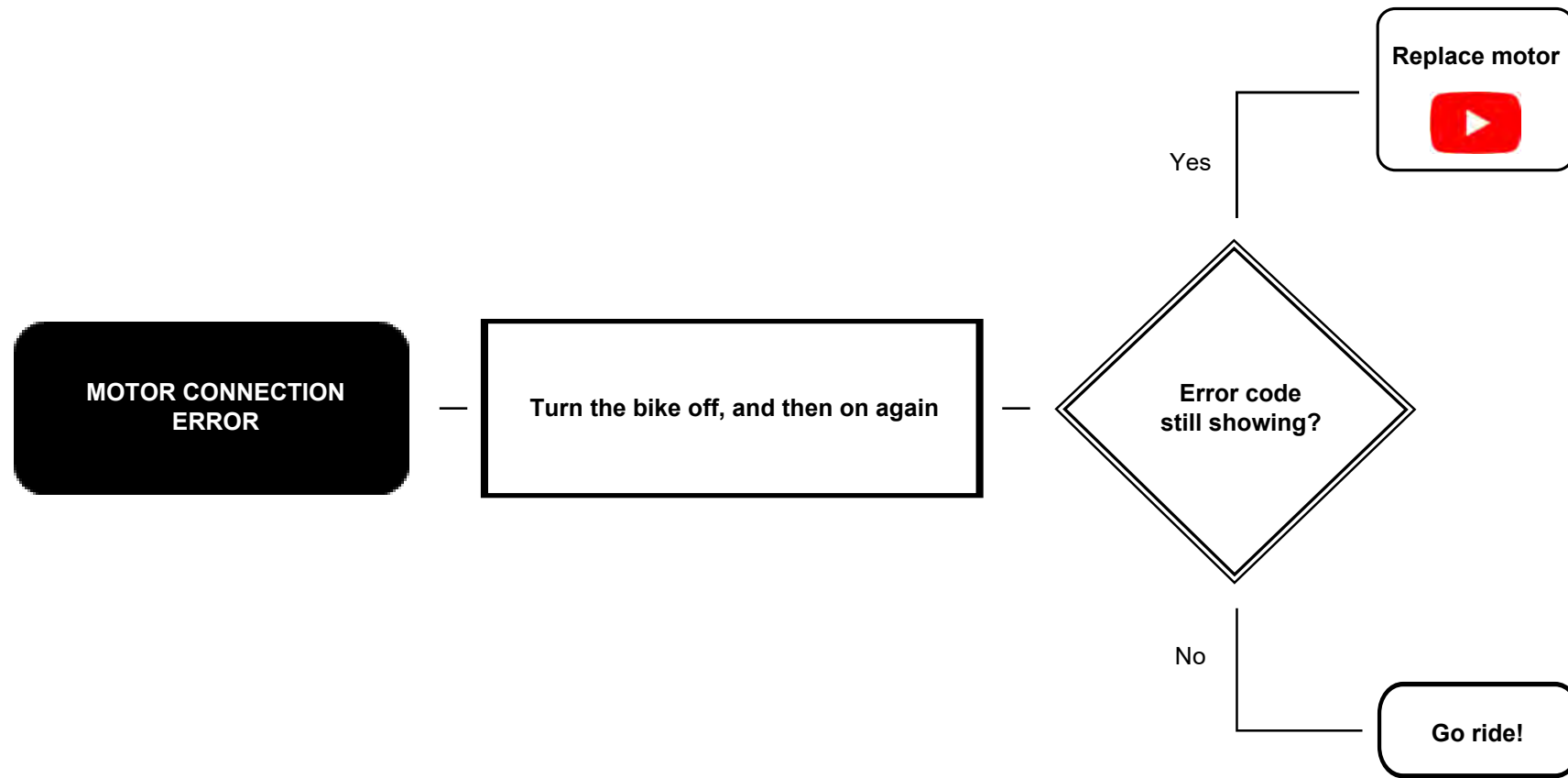
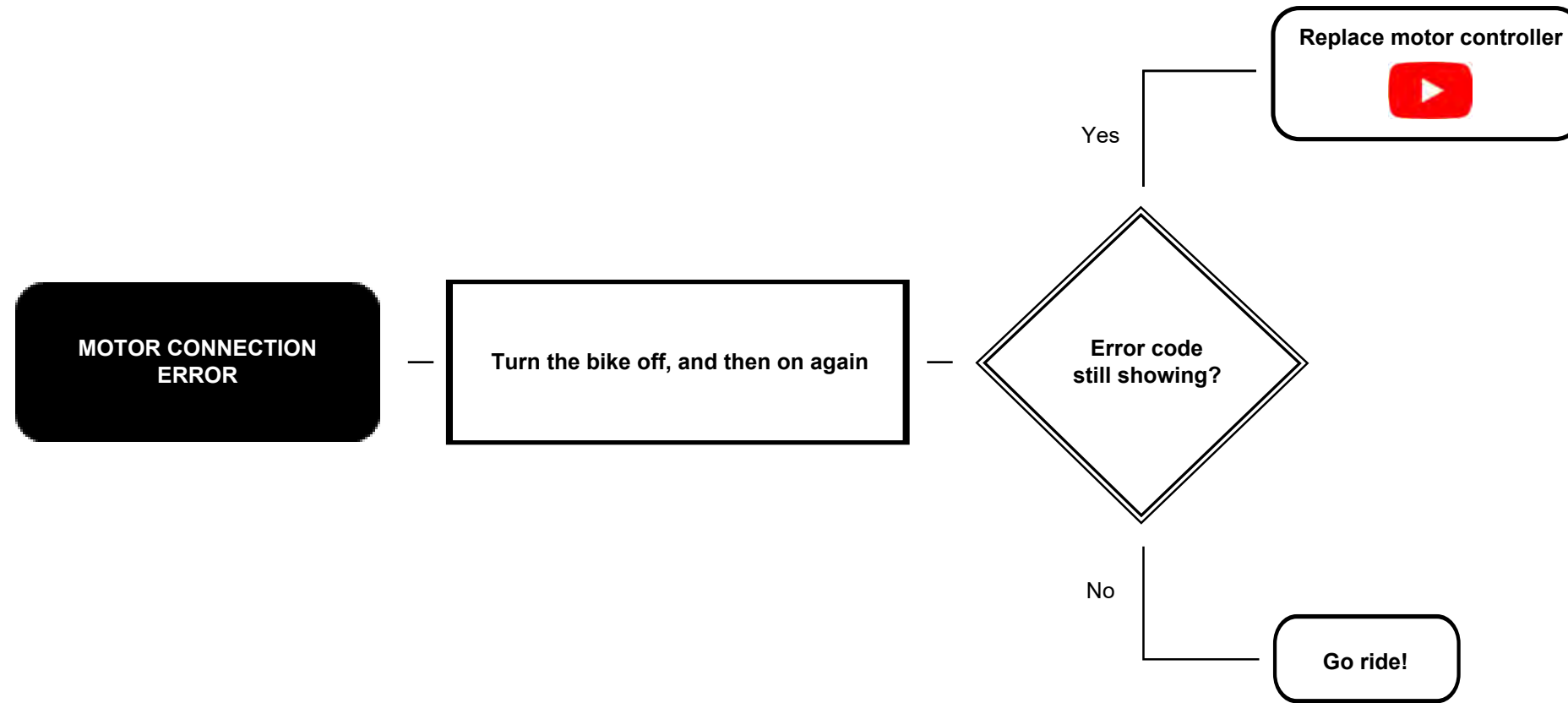


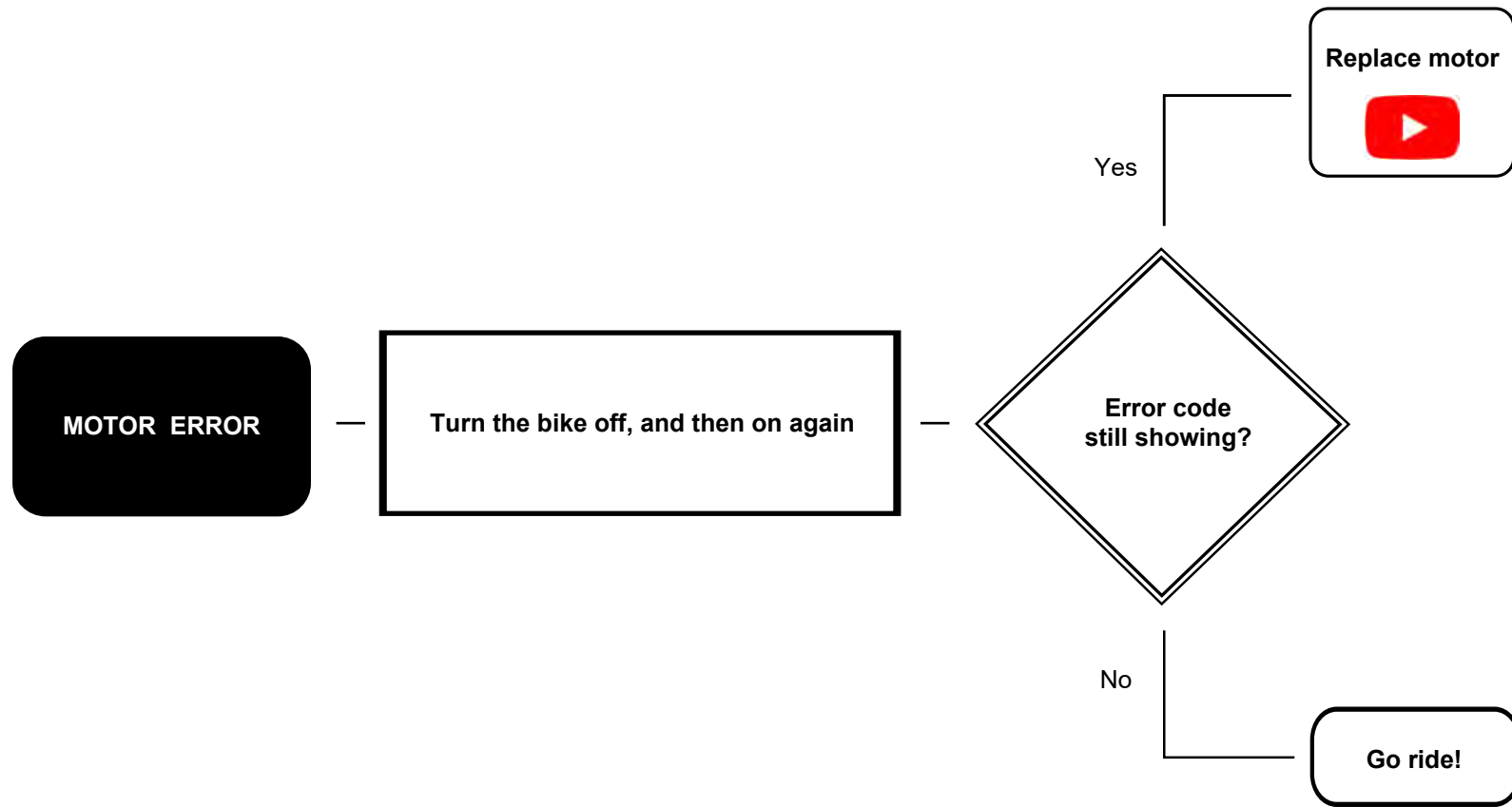
ERROR CODE 103, 121, 127, 177, 178



ERROR CODE 106, 109, 136, 139, 169, 176



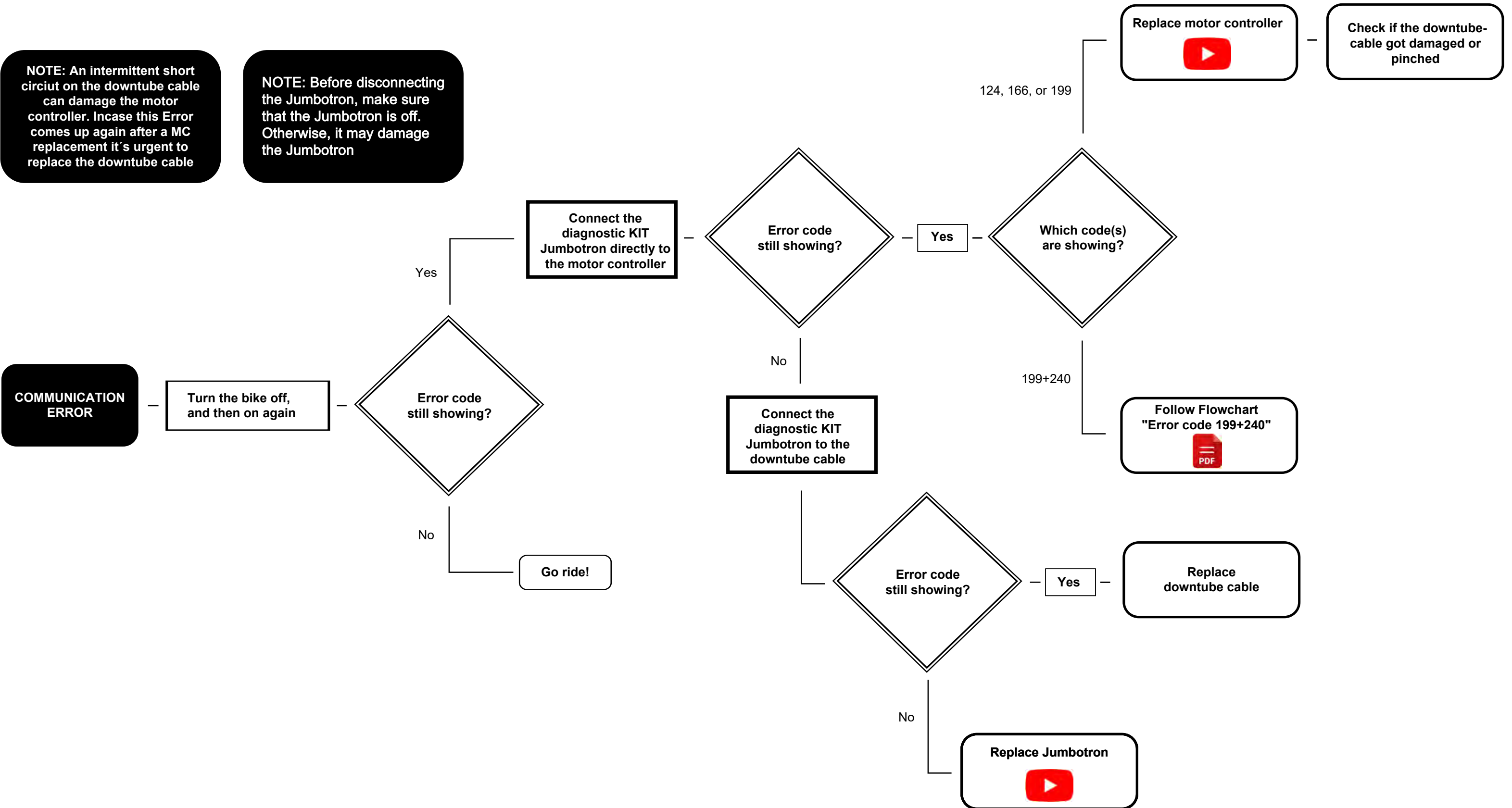
ERROR CODE 115, 185, 186



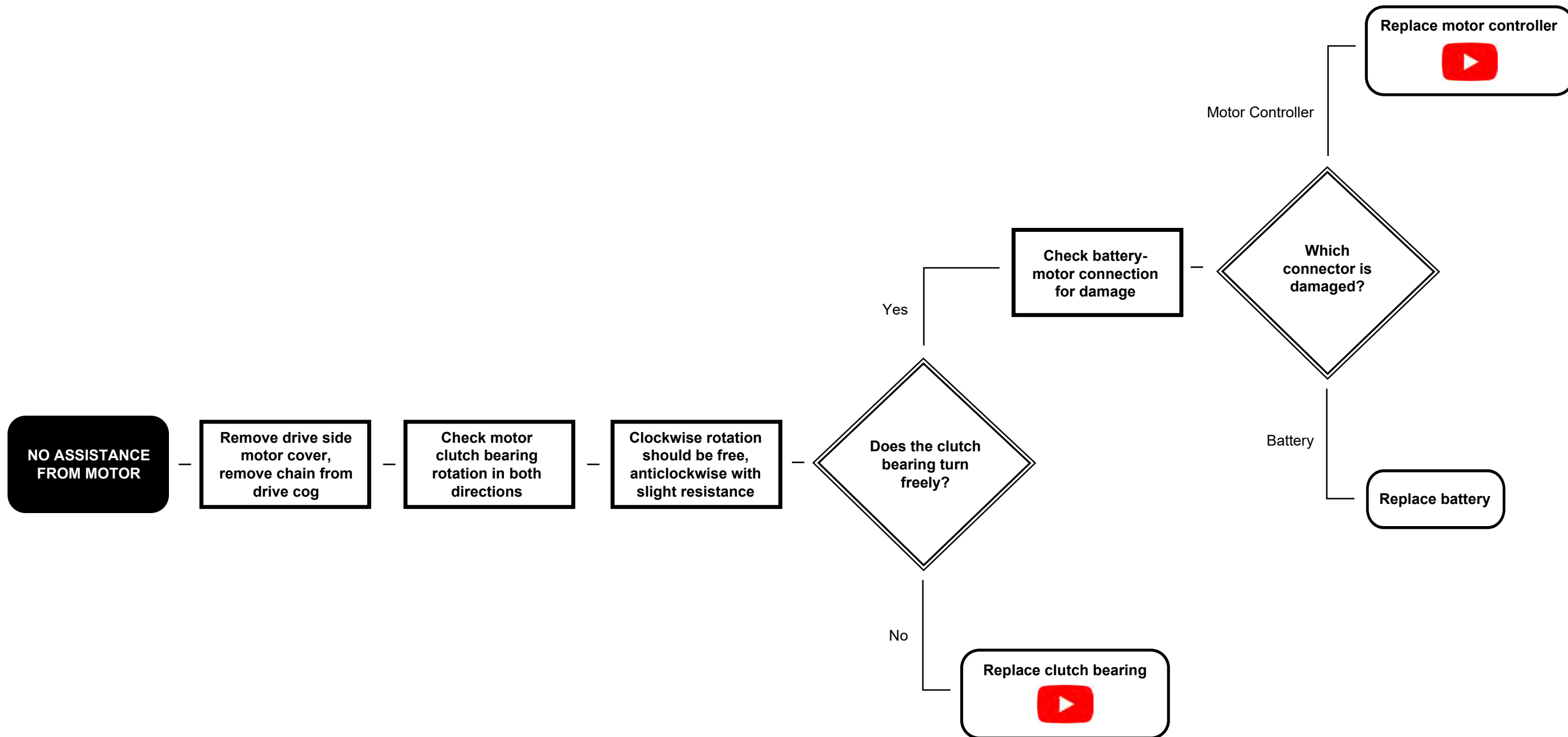
ERROR CODE 124, 166, 199

NOTE: An intermittent short circuit on the downtube cable can damage the motor controller. In case this Error comes up again after a MC replacement it's urgent to replace the downtube cable

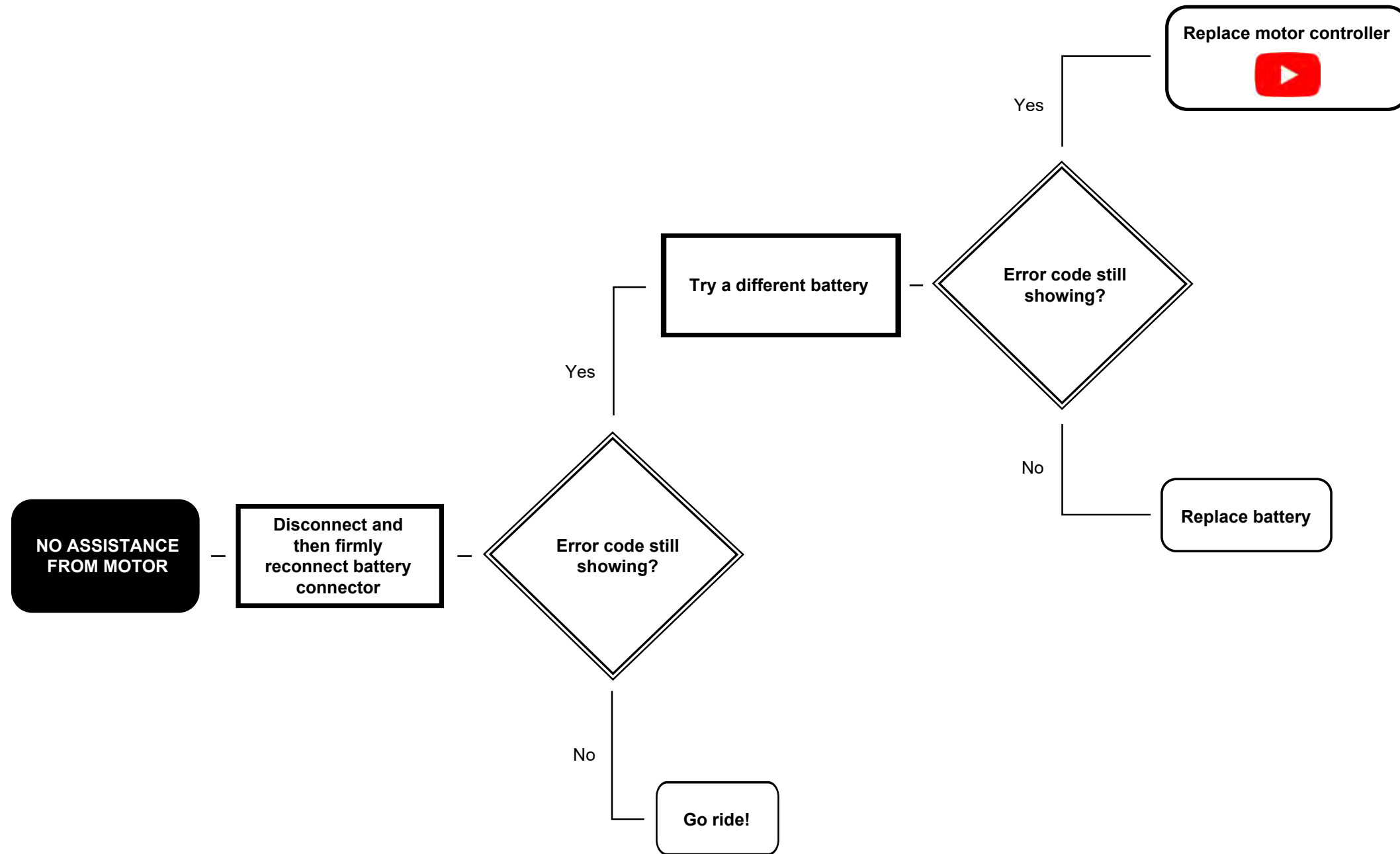
NOTE: Before disconnecting the Jumbotron, make sure that the Jumbotron is off. Otherwise, it may damage the Jumbotron



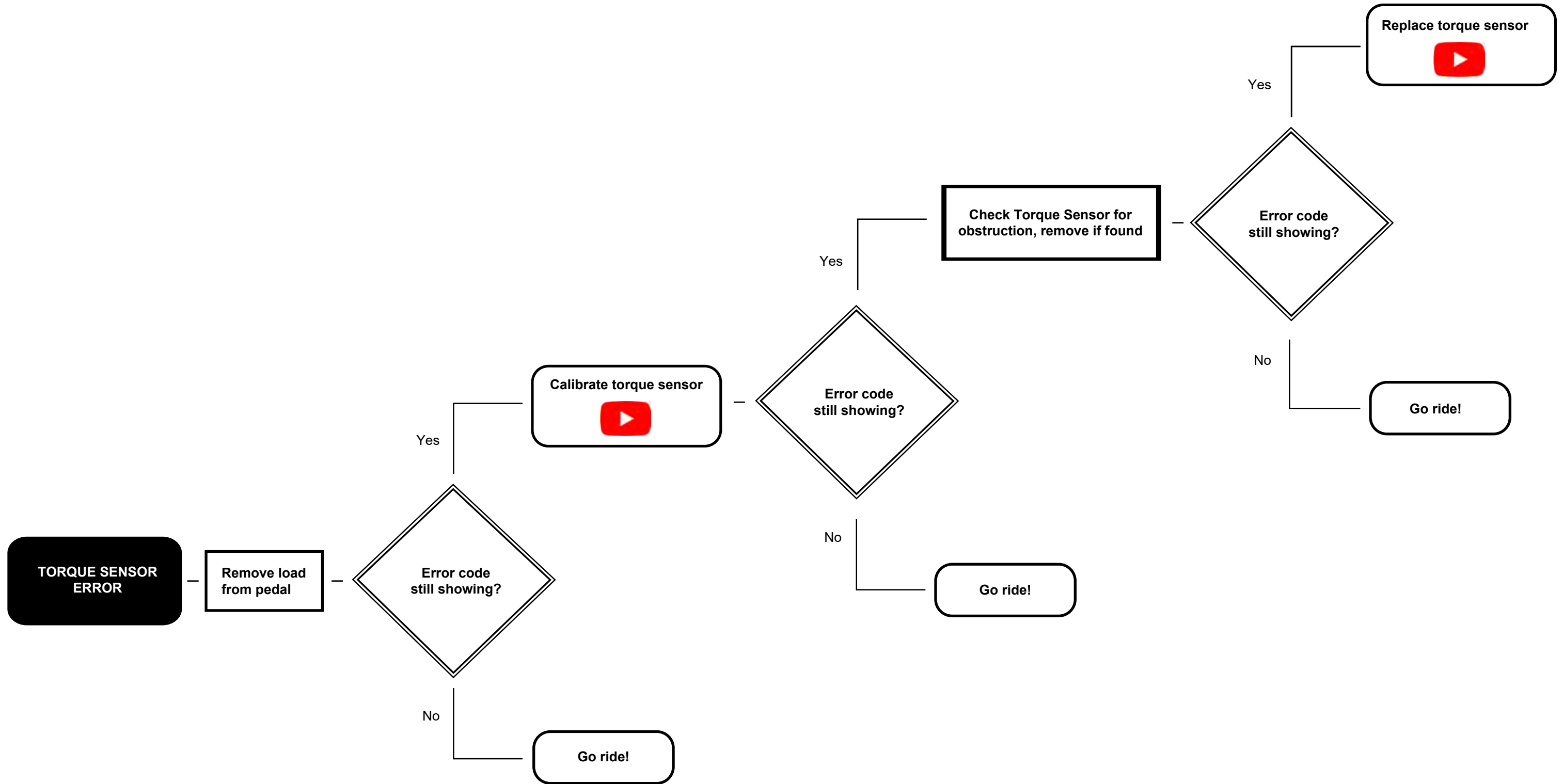
ERROR CODE 133



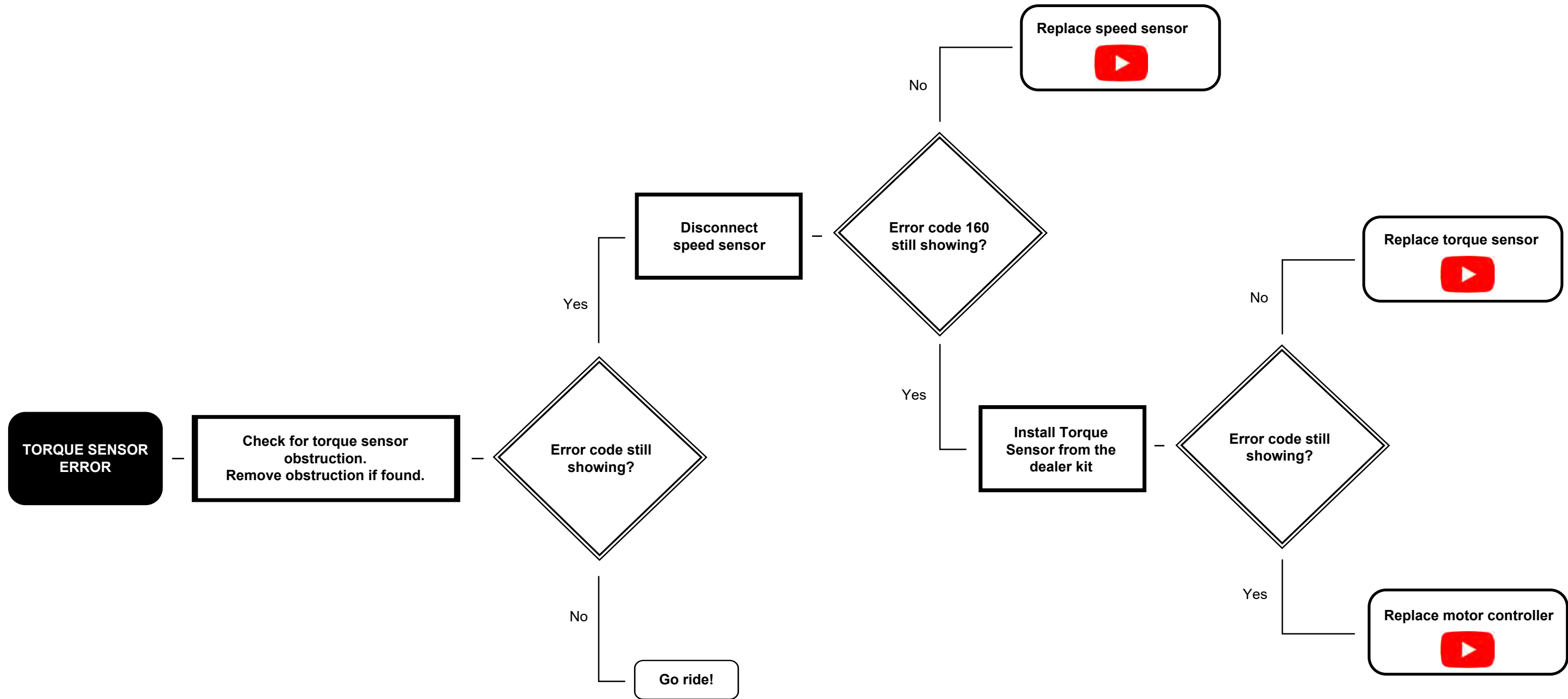
ERROR CODE 142



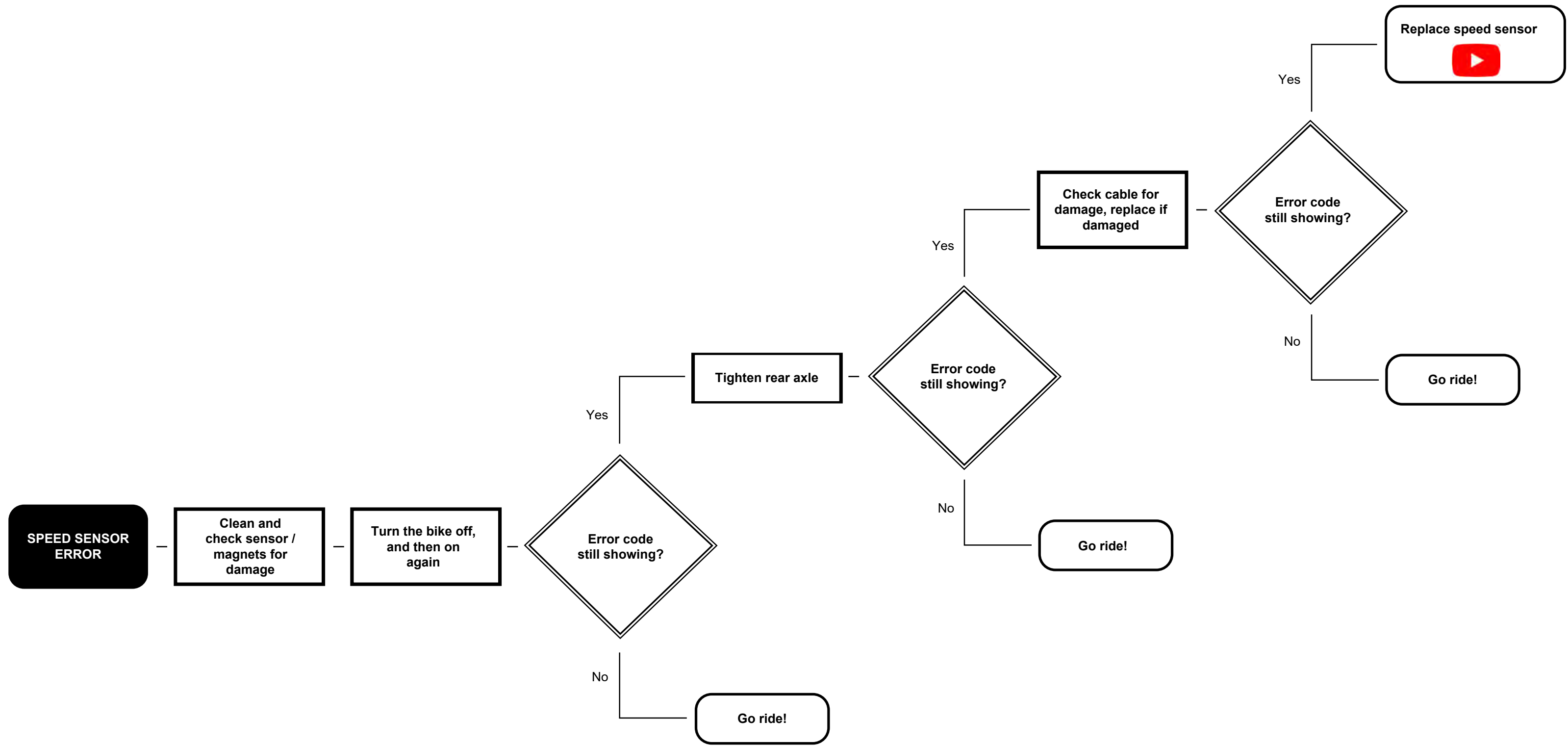
ERROR CODE 157



ERROR CODE 160

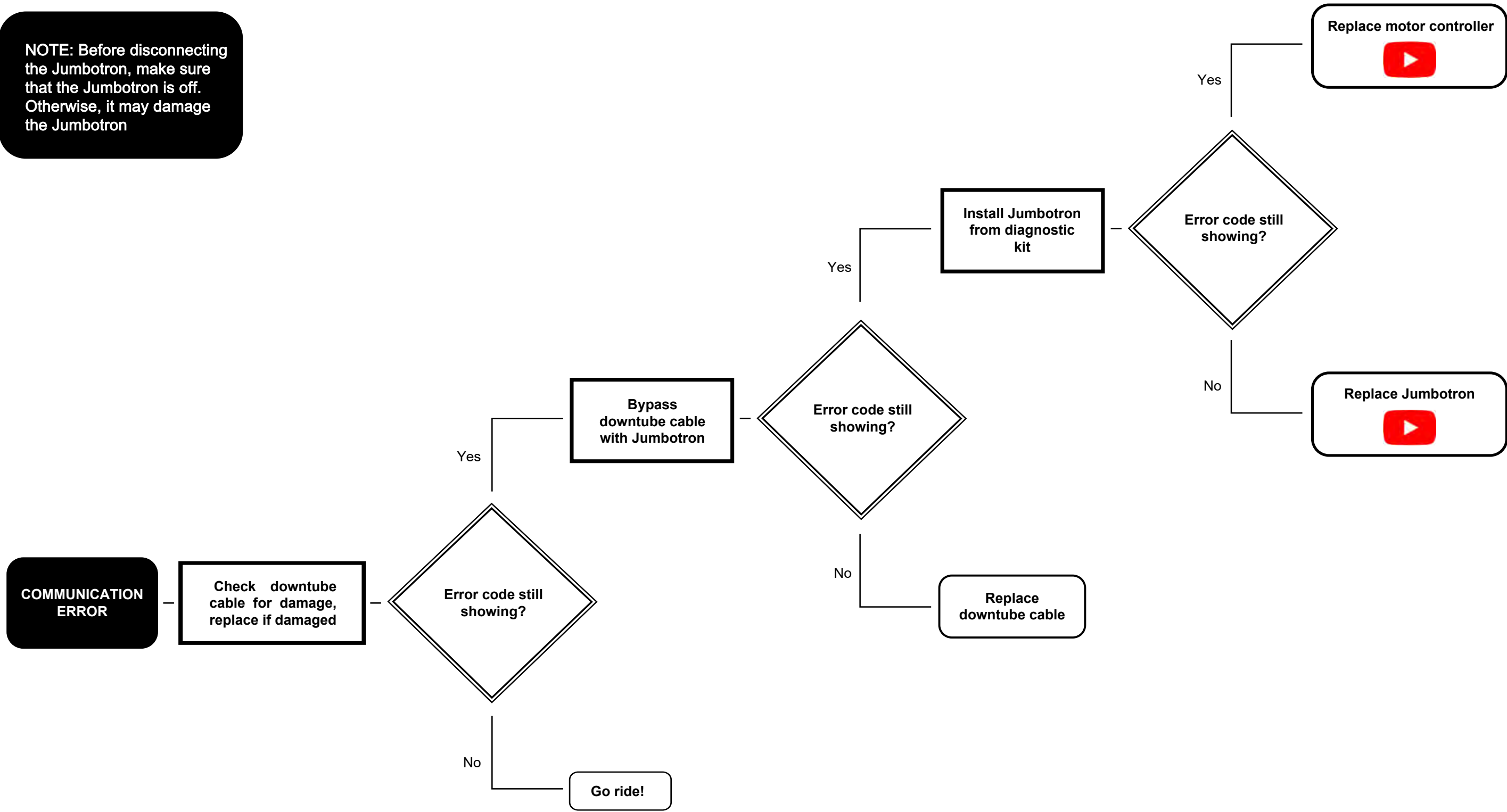


ERROR CODE 180, 189

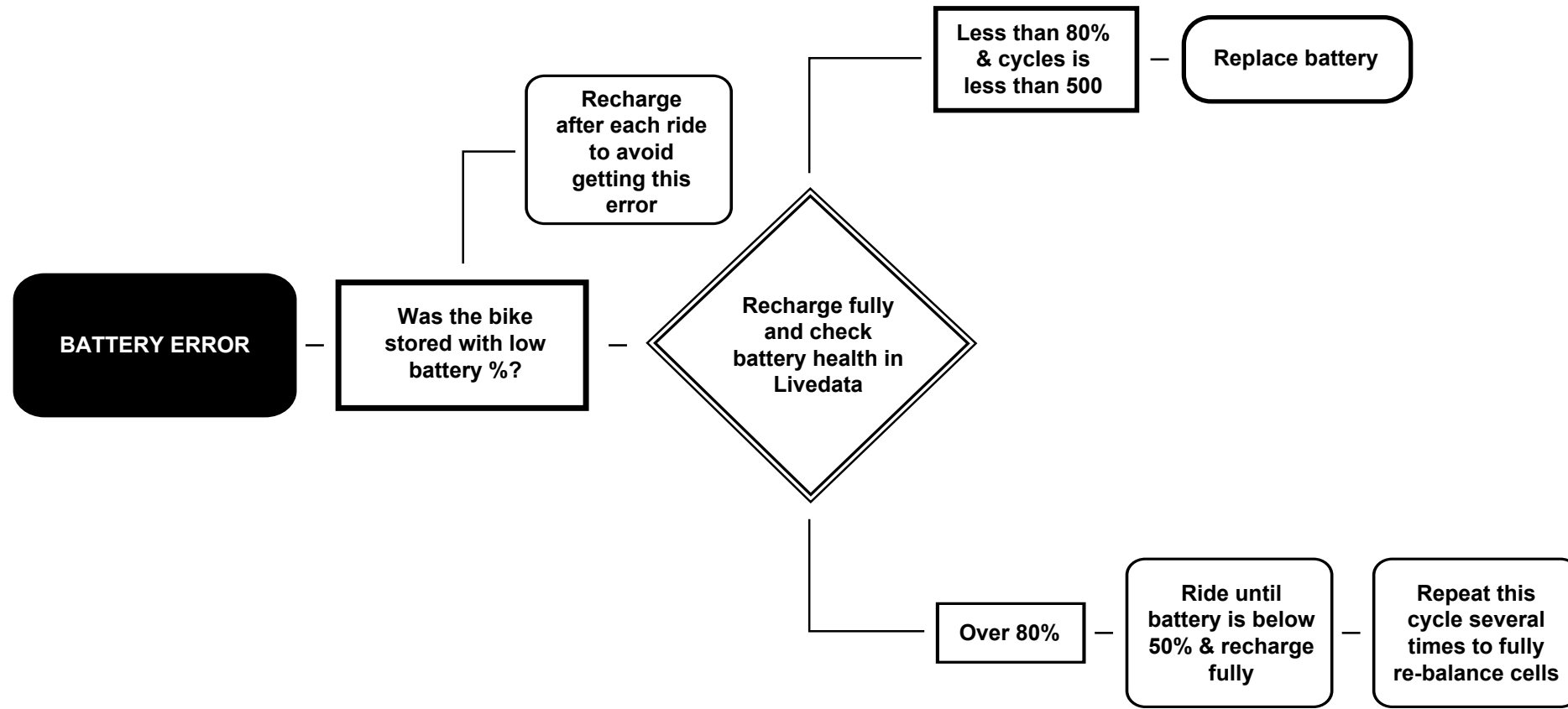


ERROR CODE 199+240

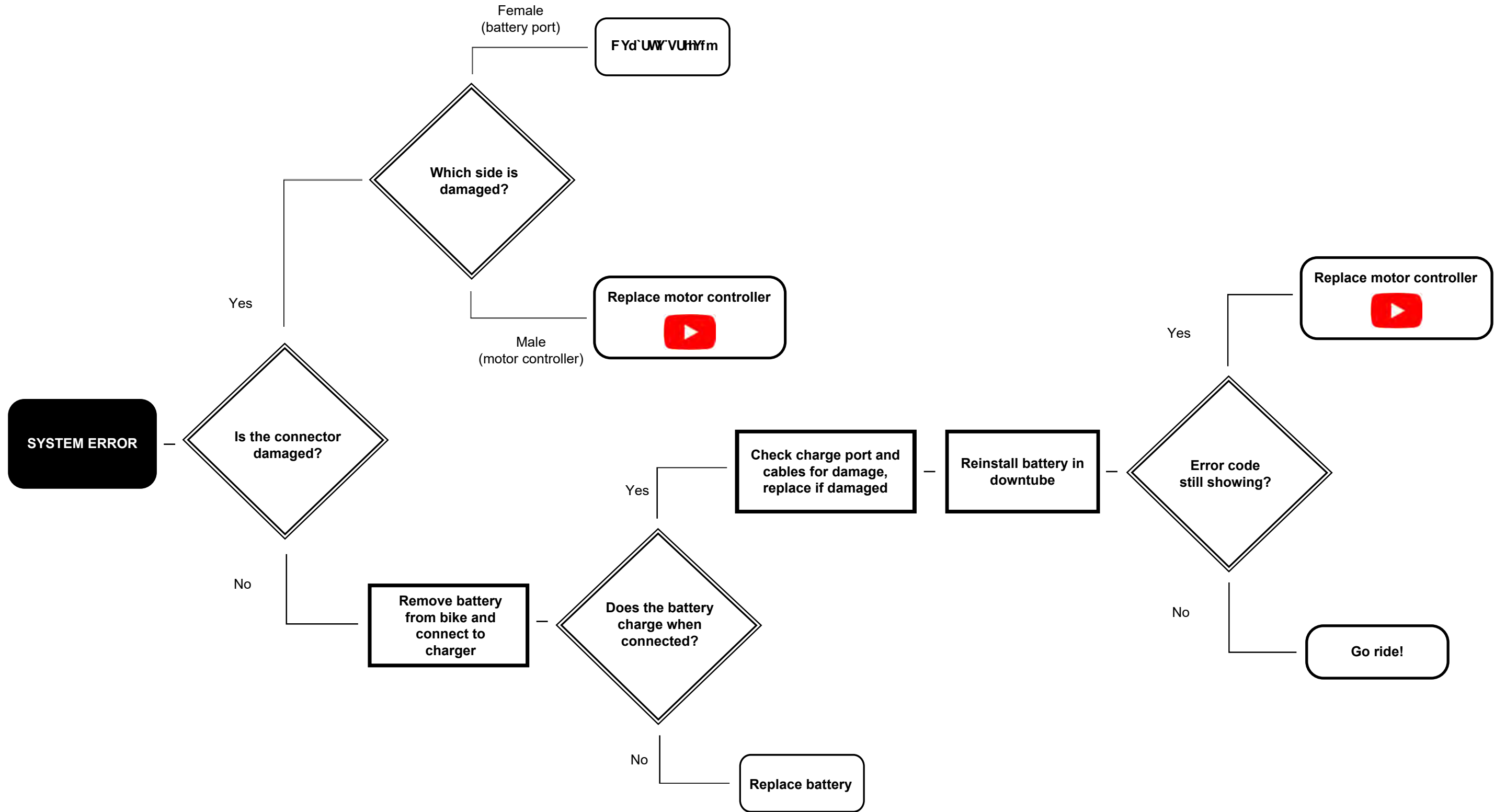
NOTE: Before disconnecting the Jumbotron, make sure that the Jumbotron is off. Otherwise, it may damage the Jumbotron



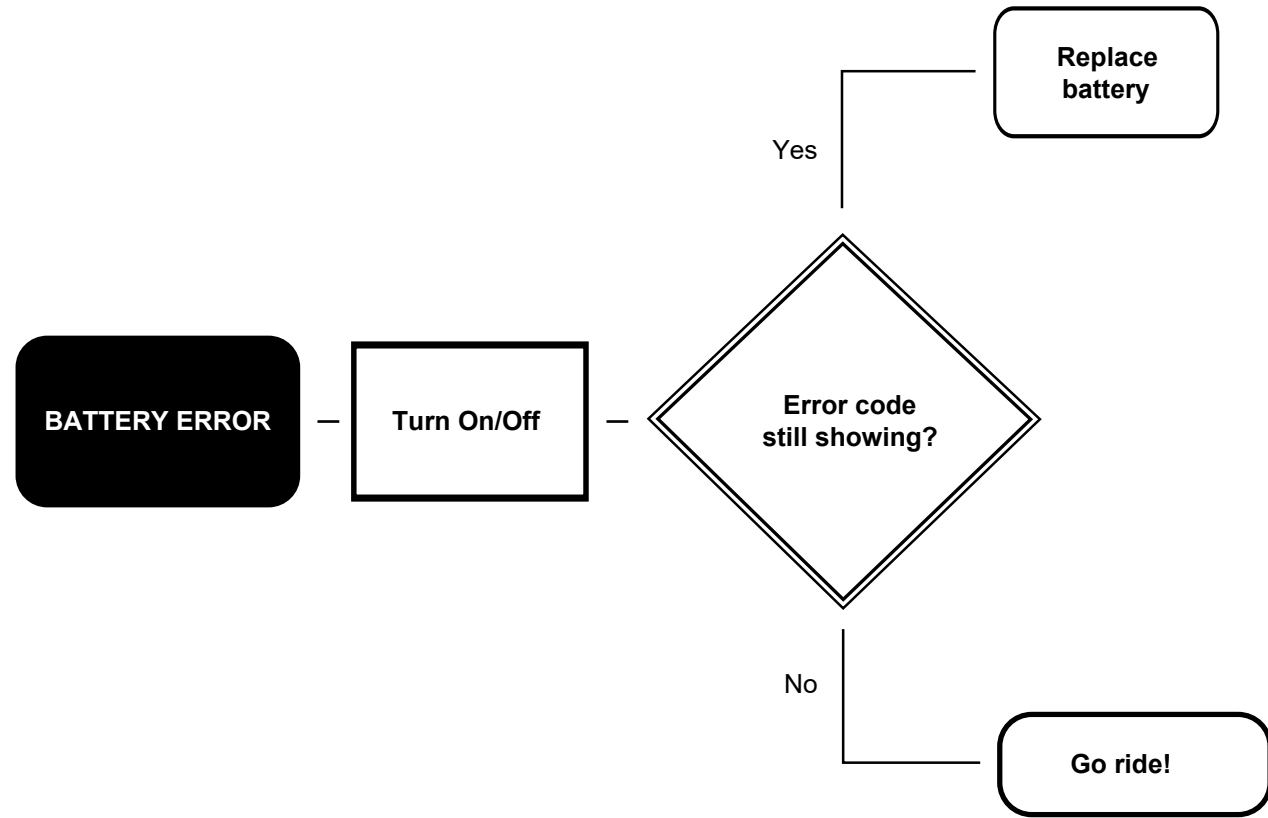
ERROR CODE 201



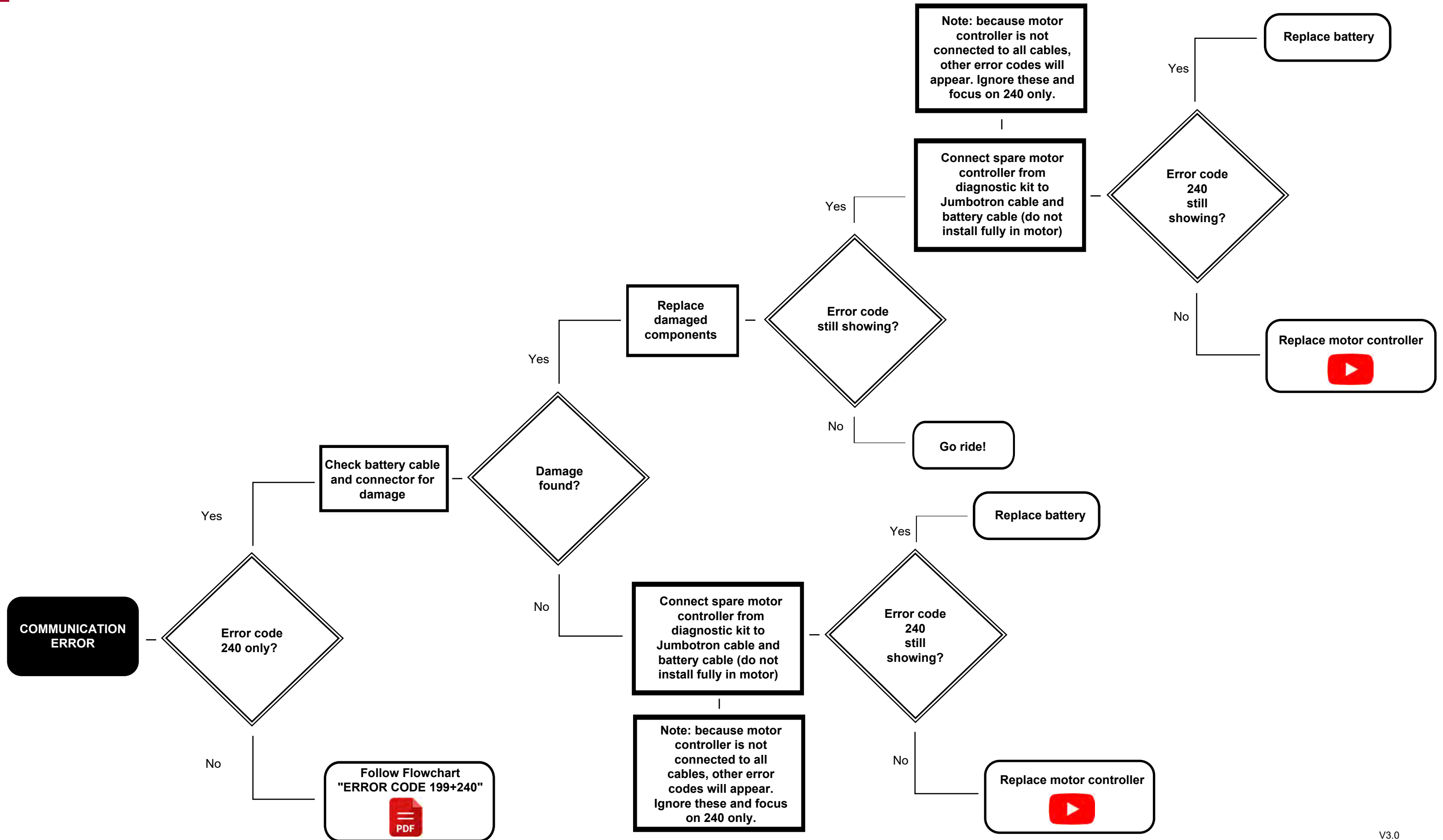
ERROR CODE 220



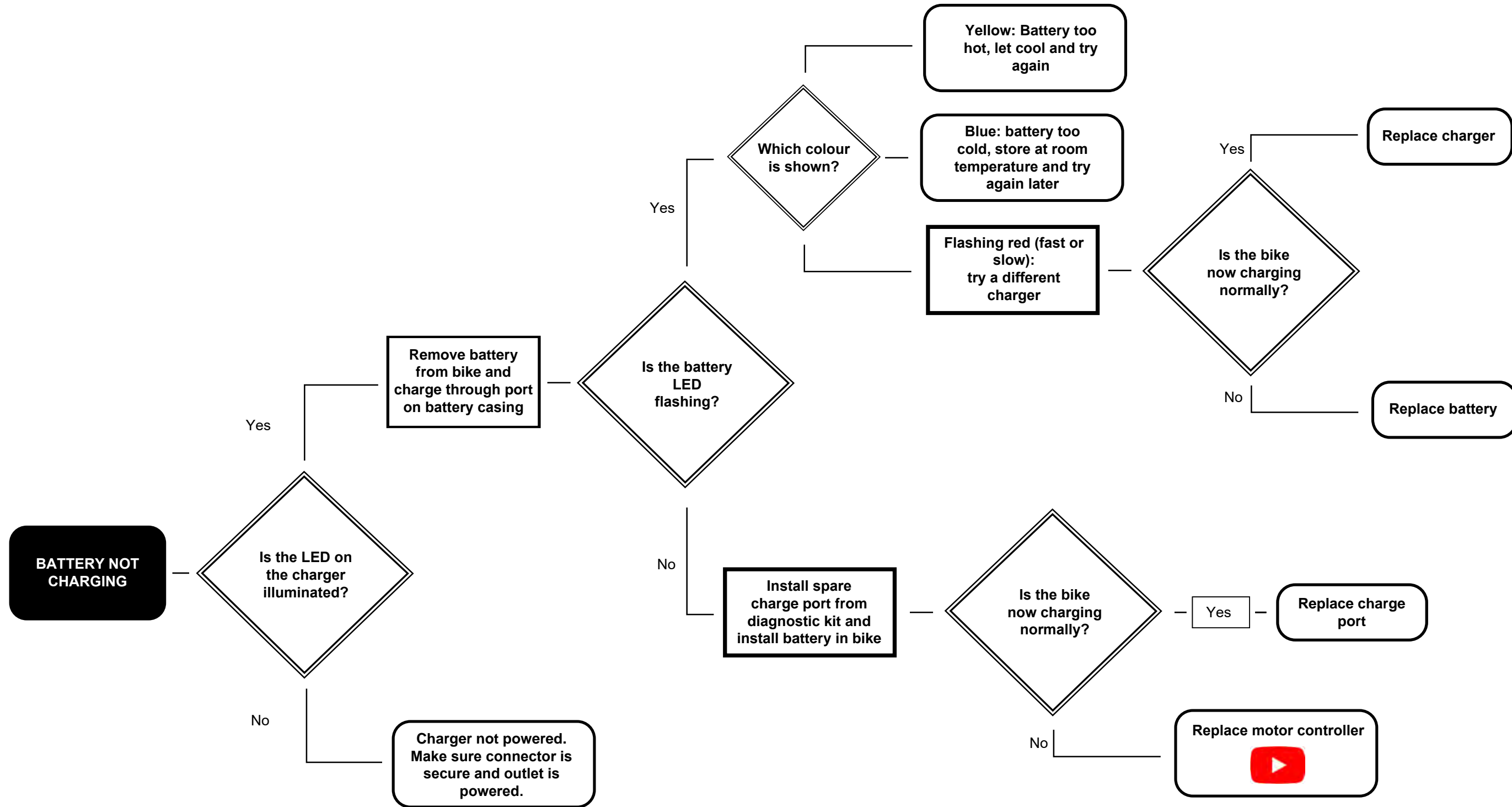
ERROR CODE 230



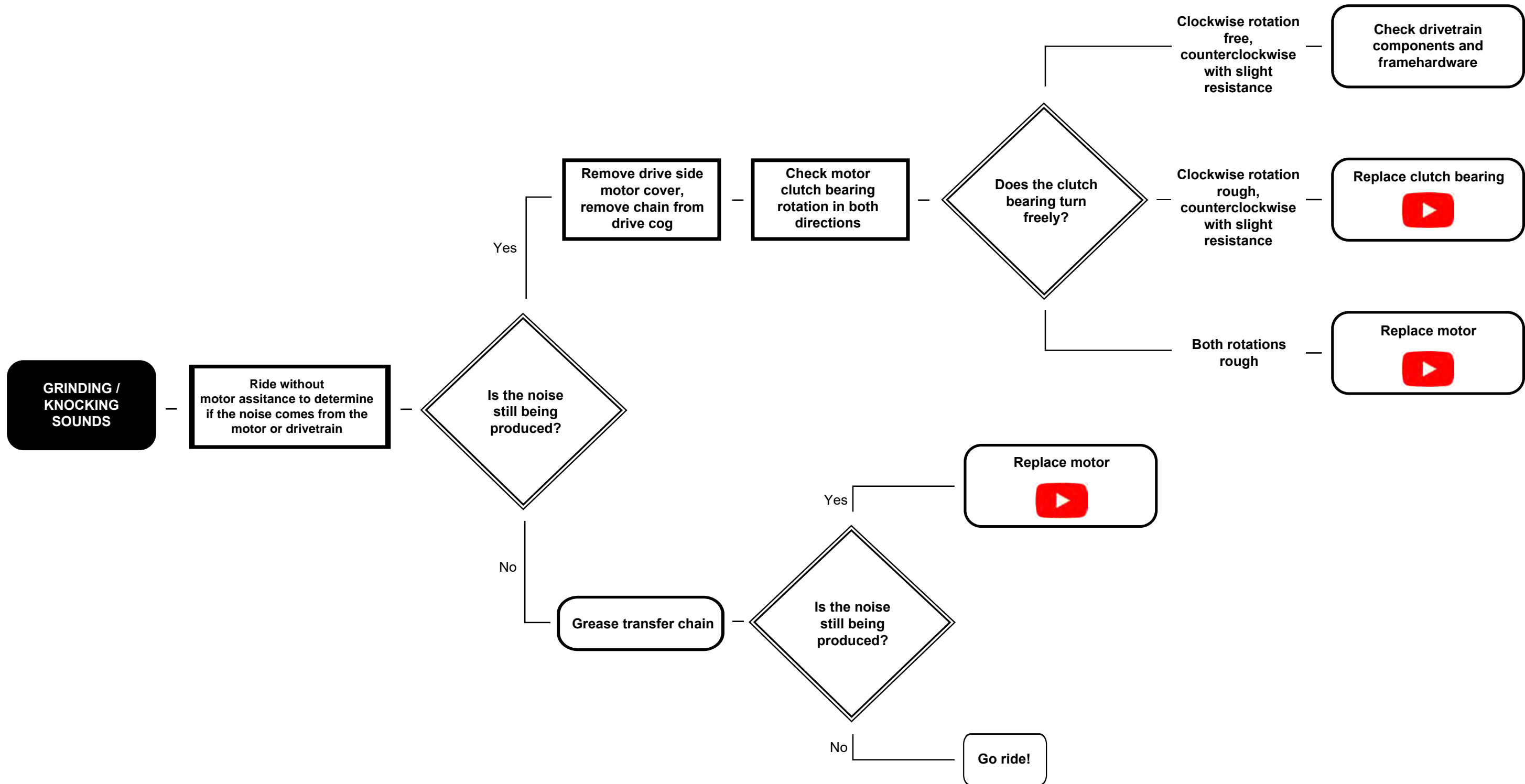
ERROR CODE 240



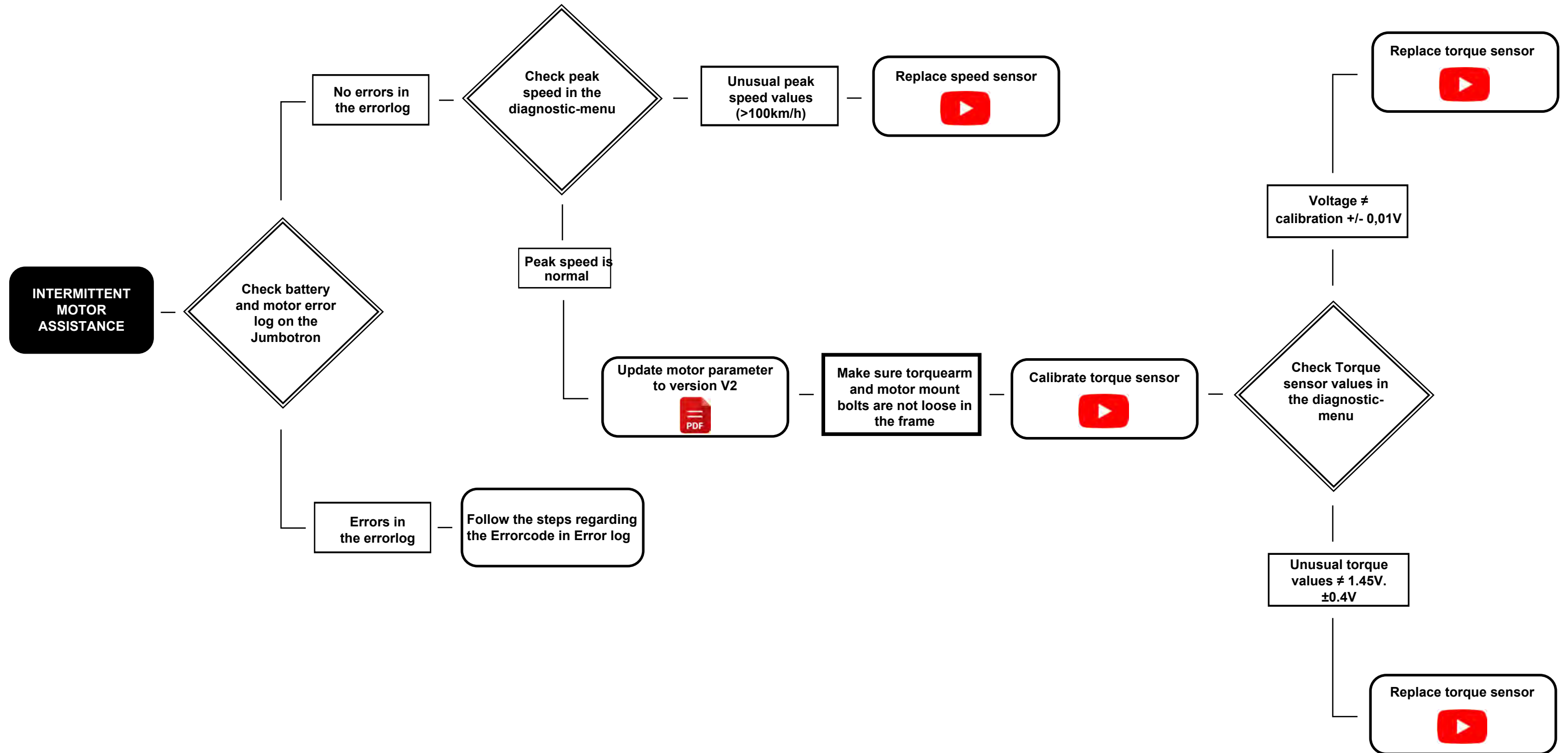
Battery not charging



Grinding / knocking sounds



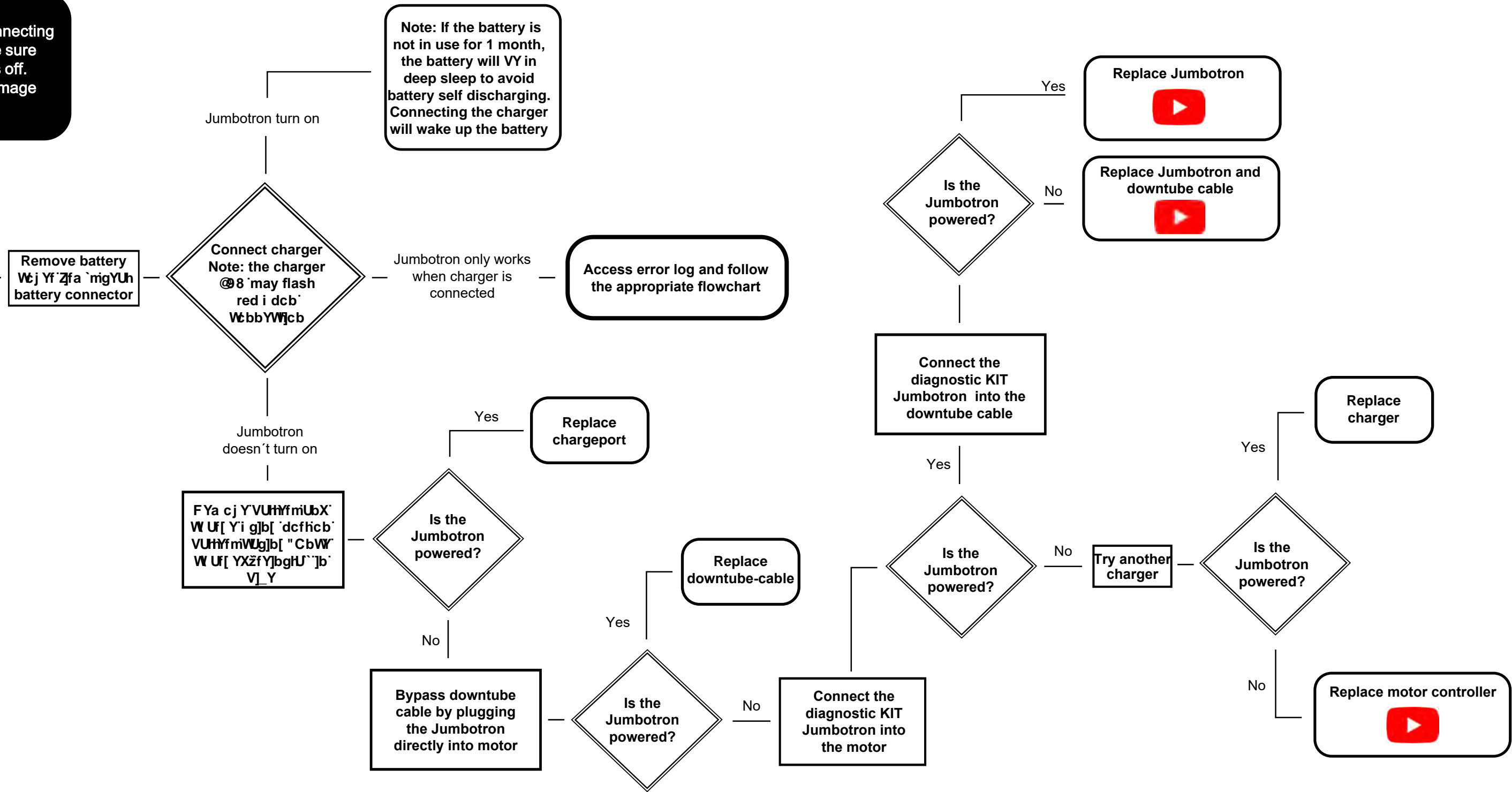
Intermittent motor assistance



Jumbotron doesn't turn on, no motor assistance

NOTE: Before disconnecting the Jumbotron, make sure that the Jumbotron is off. Otherwise, it may damage the Jumbotron

JUMBOTRON DOESN'T TURN ON, NO MOTOR ASSISTANCE

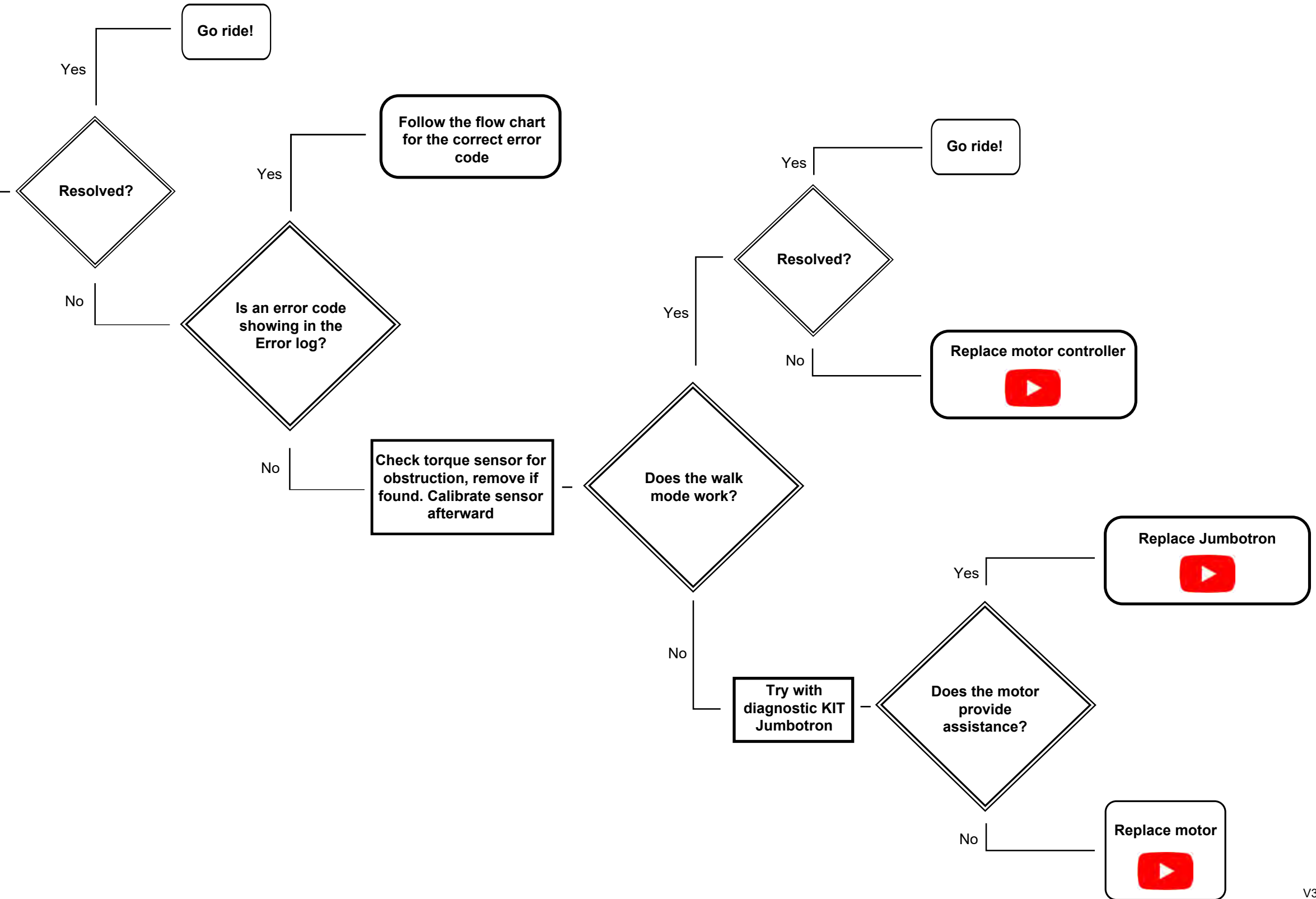


Jumbotron powered, no motor assistance, no error code

NOTE: Before disconnecting the Jumbotron, make sure that the Jumbotron is off. Otherwise, it may damage the Jumbotron

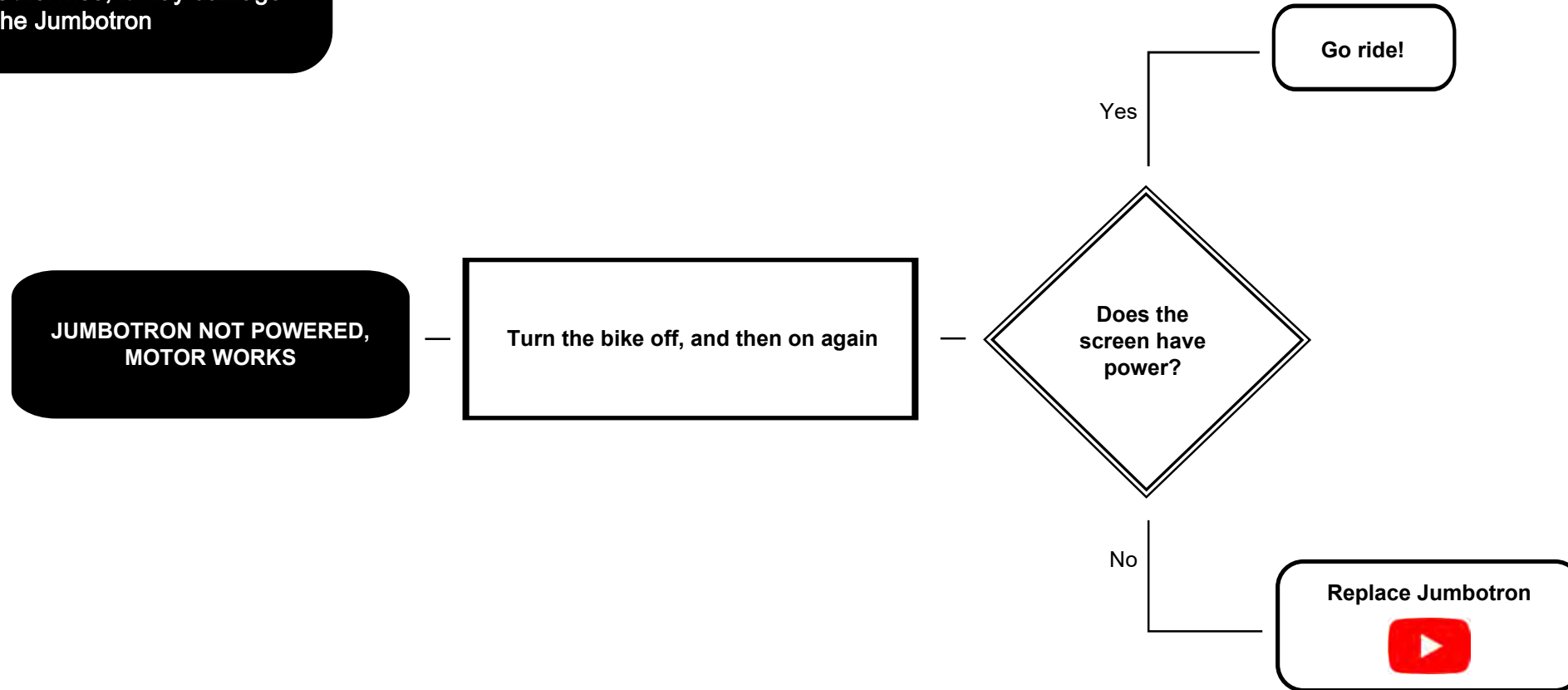
**JUMBOTRON POWERED
NO ASSISTANCE,
NO ERROR**

Remove load from pedals and turn bike off, then on again



Jumbotron screen not powered, motor works

NOTE: Before disconnecting the Jumbotron, make sure that the Jumbotron is off. Otherwise, it may damage the Jumbotron



Reduced range

