

# INSTINCT & PIPELINE ALLOY





## PRO TIPS & TRICKS

- When tuning your suspension, write down your settings so you can refer back to them. Better yet, use an online spreadsheet on your phone!
- To avoid having to readjust your Spirit Guide if you remove your crank, remove the main pivot bolt and lift the chainstay up, allowing you to remove your crank without removing the chainring.
- When removing your rear wheel, you can rest the chain on the driveside chainstay pivot to prevent it from dangling awkwardly.
- The main bearing spacer sleeve (between the two bearings) has holes in it, to serve as a drift when removing bearings:
  - Use a dull punch (the flatter the better) and rest it inside the holes in the centre sleeve.
  - Tap the bearing out.

- When replacing shift or post housing, you can use a RockShox reverb tool to simply pull a new piece of housing right into place, without disturbing the inner foam tubes.

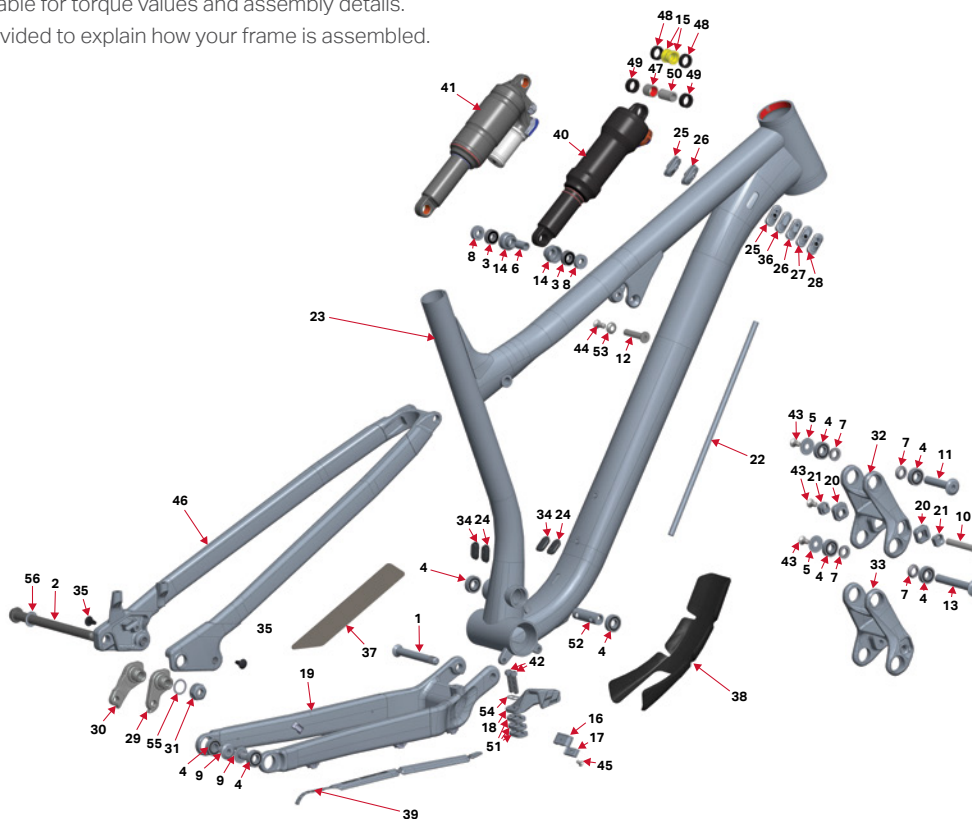


ROCKSHOX REVERB TOOL

- When assembling pivot bolts, use grease to “glue” any spacers into place while you assemble.
- Insert pivots through bearings/spacers so they sit flush with the inside face of the inner race, holding washers in place while you assemble.
- Zip-tie a spare derailleur hanger to your saddle rails so you always have one with you when you’re deep in the woods.

## EXPLODED VIEW

Please refer to the table for torque values and assembly details. These views are provided to explain how your frame is assembled.



## SMALL PARTS KITS

Please refer to the small parts kits available for purchase.

There are several kits available to maintain your bike for maximum trail performance. <https://shop.bikes.com/collections/parts>

These are available from your local dealer, as well as on [www.bikes.com](http://www.bikes.com)

#	QTY	ITEM	PARTS NO.	DESCRIPTION
			<b>1817011RMB</b>	<b>AXLE KIT</b>
2	1	AXLE, REAR	3227009	REAR AXLE 12 X 173 MM, HARD BLACK ANO
56	1	WASHER	3227006	WASHER, 12 X 19 X 0.5 MM, 304 SS
			<b>1819015</b>	<b>INSTINCT LINK WITH BEARING KIT</b>
32	1	LINK	1098101	INSTINCT LINK, 88 MM LONG, RIDE-9, AL 7075-T6, HARD BLACK ANO
4	4	BEARING	1807042	ENDURO BEARING 6900 2RS MAX TYPE, 22 X 10 X 6 SIZE
			<b>1819016</b>	<b>INSTINCT BC LINK WITH BEARING KIT</b>
33	1	LINK	1098102	INSTINCT BC LINK, 88 MM LONG, AL 7075-T6, HARD BLACK ANO
4	4	BEARING	1807042	ENDURO BEARING 6900 2RS MAX TYPE, 22 X 10 X 6 SIZE
			<b>1818012</b>	<b>HANGER KIT SHIMANO DIRECT MOUNT</b>
30	1	HANGER	1099041	REAR DER. HANGER, EXT. THREAD, SHIMANO DIRECT MOUNT
31	1	HANGER NUT	1099033	HANGER NUT, M16X1, 8 MM HEX
55	1	WASHER	1808029	WASHER, 16 X 20 X 0.5 MM, 304 SS
			<b>1818013</b>	<b>KIT STANDARD HANGER</b>
29	1	HANGER	1099031	REAR DER. HANGER, EXT. THREAD, STD MOUNT
31	1	HANGER NUT	1099033	HANGER NUT, M16X1, 8 MM HEX
55	1	WASHER	1808029	WASHER, 16 X 20 X 0.5 MM, 304 SS
			<b>1810005</b>	<b>PIVOT BOLT KIT</b>
1	1	AXLE, MP	1807029	MP AXLE, M10X1.25, L: 84 MM, AL 7075-T6 HARD BLACK ANO
5	2	BEARING CAP	1807043	6900 BEARING CAP, AL 7075-T6, HARD BLACK ANO
7	4	BEARING SPACER	1807044	6900 BEARING SPACER
9	2	BOLT	1807046	BOLT, 10 X 15 MM, M10X1 EXT., AL 7075-T6 HARD BLACK ANO
10	1	BOLT	1807049	CSUNK BOLT, 8 X 57 MM X M6 INT.
11	1	BOLT	1807060	BOLT, 10 X 54 MM, M6X1 INT., AL 7075-T6, HARD BLACK ANO
13	1	BOLT, M10X78	1807061	BOLT, 10 X 78 MM, M6X1 INT., AL 7075-T6, HARD BLACK ANO
43	3	SCREW M6X12	180566-012 FBY	FLAT HEAD C'SUNK SOCKET SCREW, M6-1.0 X 12 MM, A4/316 SS, 55060.060.012
53	1	WASHER	1807064	C'SUNK WASHER: (for M6 screw) ID: 6 X OD: 14.6 X 3.25 MM THK.
44	1	SCREW M6x16	180566FBY-016	FLAT HEAD C'SUNK SOCKET SCREW, M6-1.0 X 16 MM, A4/316 STAINLESS STEEL
12	1	BOLT SHK.	1807062	SHOCK BOLT, SOLID, OD: 8 MM, L: 41 MM
52	1	SPACER, MP	1807038	MAIN PIVOT CENTER SPACER, ID: 10 MM, L: 48 MM

#	QTY	ITEM	PARTS NO.	DESCRIPTION
			<b>1817017RMB</b>	<b>BEARING KIT</b>
4	8	BEARING	1807042	ENDURO BEARING 6900 2RS MAX TYPE, 22 X 10 X 6 SIZE
			<b>1810007</b>	<b>BIKE PROTECTION KIT A</b>
37	1	PROTECTOR	3708008	SEATSTAY PROTECTOR
38	1	PROTECTOR	3708022	MULTIBIKE DOWNTUBE PROTECTOR
39	1	PROTECTOR	3708035	MULTIBIKE CHAINSTAY PROTECTOR
			<b>1818003</b>	<b>SHOCK BEARING EYELET KIT</b>
3	2	BEARING	1807036	ENDURO 698 LLU MAX 19 X 8 X 6
6	1	BEARING SLEEVE	1807028	BEARING EYELET SLEEVE FOR SR 19 X 8 X 6 CUP
8	2	BEARING SPACER	1807099	EYELET BEARING SPACER, 5.3 MM THK, FOR 40 MM LINK WIDTH
14	2	BRG CUP	1807026	BEARING EYELET FOR SR 19 X 8 X 6 BRG
			<b>1810009</b>	<b>RIDE-9 FLIP CHIP KIT</b>
20	2	FLIP CHIP	1807003	FLIP CHIP, OUTSIDE, AL 7075, BLACK ANODIZE
21	2	FLIP CHIP	1807004	FLIP CHIP, INSIDE, AL 7075, BLACK ANODIZE
			<b>1810006</b>	<b>SPIRIT GUIDE KIT</b>
18	1	CHAIN GUIDE	3398001	CHAIN GUIDE
42	2	SCREW	1807132	M6-1.0, 25 MM LONG, SOCKET HEAD
54	1	WASHER	1807133	CHAIN GUIDE WASHER
51	3	SPACER	3398002	CHAIN GUIDE SPACER
			<b>1818014RMB</b>	<b>GROMMET KIT FOR ALLOY FRAME</b>
25	2	GROMMET	1809004	RUBBER GROMMET FOR 2 CABLES, 5 MM, 4 MM YF-W13-2
26	2	GROMMET	1809005	RUBBER GROMMET FOR 1 CABLE, 4 MM YF-W13-4
27	1	GROMMET	1809006	RUBBER GROMMET FOR 1 CABLE, 5 MM YF-W13-5
28	1	GROMMET	1809007	RUBBER GROMMET FOR 2 CABLES, 5 MM, 5 MM YF-W13-8
36	1	PLUG	1809008	RUBBER PLUG YF-W13-7
34	2	PLUG	1807077	34.9 MM SEAT TUBE PLUG
24	2	GROMMET	1807078	34.9 MM SEAT TUBE DROPPER GROMMET
			<b>1818006RMB</b>	<b>ALLOY SEAT STAY CAP KIT FOR ALLOY FRAMES ONLY</b>
35	2	PLUG	1808034	PLASTIC PLUG FOR M5 THREAD, 12 MM BUTTON HEAD, BLACK PLASTIC
			<b>1819014</b>	<b>DOWNTUBE CABLE CLAMP KIT</b>
16	1	CABLE PORT	1807066	CABLE PORT, 2-PIECE, BOTTOM HALF
17	1	CABLE PORT	1807067	CABLE PORT, 2-PIECE, TOP HALF
45	1	SCREW, M4x8	1807068	C'SUNK SOCKET SCREW, M4X8 MM, ZINC PLATED 10.9 STEEL