

INSTINCT & PIPELINE CARBON



PRO TIPS & TRICKS

- When tuning your suspension, write down your settings so you can refer back to them. Better yet, use an online spreadsheet on your phone!
- Use a 4 mm plastic housing ferrule to plug any unused cable ports at the head tube.
- To avoid having to readjust your Spirit Guide if you remove your crank, remove the main pivot bolt and lift the chainstay up, allowing you to remove your crank without removing the chainring.
- When removing your rear wheel, you can rest the chain on the driveside chainstay pivot to prevent it from dangling awkwardly.
- The main bearing spacer sleeve (between the two bearings) has holes in it, to serve as a drift when removing bearings:
 - Use a dull punch (the flatter the better) and rest it inside the holes in the centre sleeve.
 - Tap the bearing out.

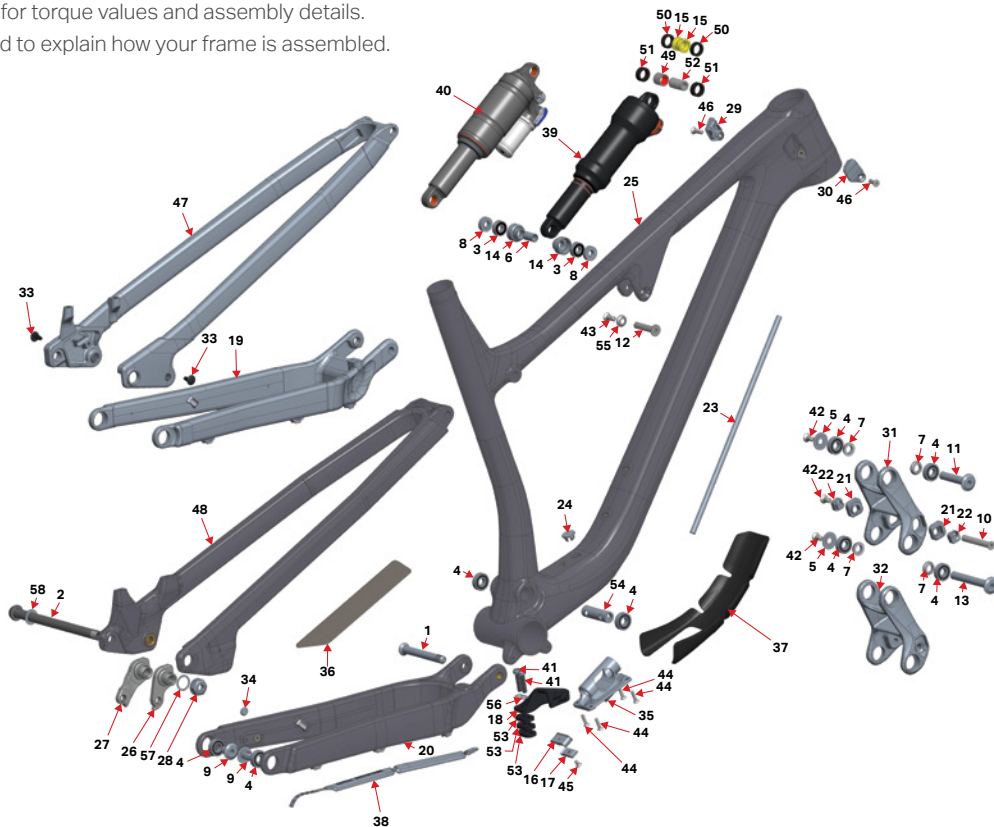
- When replacing shift or post housing, you can use a RockShox reverb tool to simply pull a new piece of housing right into place, without disturbing the inner foam tubes.



- When assembling pivot bolts, use grease to “glue” any spacers into place while you assemble.
- Insert pivots through bearings/spacers so they sit flush with the inside face of the inner race, holding washers in place while you assemble.
- Zip-tie a spare derailleur hanger to your saddle rails so you always have one with you when you’re deep in the woods.

EXPLODED VIEW

Please refer to the table for torque values and assembly details. These views are provided to explain how your frame is assembled.



SMALL-PARTS KITS

Please refer to the small-parts kits available for purchase.

There are several kits that can help you maintain your bike for maximum trail performance: <https://shop.bikes.com/collections/parts>.

These are available from your local dealer, as well as on www.bikes.com.

#	QTY	ITEM	PARTS NO.	DESCRIPTION
			1819015	INSTINCT LINK WITH BEARING KIT
31	1	LINK	1098101	INSTINCT LINK, 88 MM LONG, RIDE-9, AL 7075-T6, HARD BLACK ANO
4	4	BEARING	1807042	ENDURO BEARING 6900 2RS MAX TYPE, 22 X 10 X 6 SIZE
			1819016	INSTINCT BC LINK WITH BEARING KIT
32	1	LINK	1098102	INSTINCT BC LINK, 88 MM LONG, AL 7075-T6, HARD BLACK ANO
4	4	BEARING	1807042	ENDURO BEARING 6900 2RS MAX TYPE, 22 X 10 X 6 SIZE
			1818012	HANGER KIT SHIMANO DIRECT MOUNT
27	1	HANGER	1099041	REAR DER. HANGER, EXT THREAD, SHIMANO DIRECT MOUNT
28	1	HANGER NUT	1099033	HANGER NUT, M16 X 1, 8 MM HEX
57	1	WASHER	1808029	WASHER, 16 X 20 X 0.5 MM, 304 SS
			1818013	KIT STANDARD HANGER
26	1	HANGER	1099031	REAR DER. HANGER, EXT THREAD, STD MOUNT
28	1	HANGER NUT	1099033	HANGER NUT, M16 X 1, 8 MM HEX
57	1	WASHER	1808029	WASHER, 16 X 20 X 0.5 MM, 304 SS
			1810005	PIVOT BOLT KIT
1	1	AXLE, MP	1807029	MP AXLE, M10 X 1.25, L: 84 MM, AL7075-T6, HARD BLACK ANO
5	2	BEARING CAP	1807043	6900 BEARING CAP, AL 7075-T6, HARD BLACK ANO
7	4	BEARING SPACER	1807044	6900 BEARING SPACER
9	2	BOLT	1807046	BOLT, 10 MM X 15 MM, M10 X 1 EXT., AL 7075-T6, HARD BLACK ANO
10	1	BOLT	1807049	C'SUNK BOLT, 8 MM X 57 MM X M6 INT.
11	1	BOLT	1807060	BOLT, 10 MM X 54 MM, M6 X 1 INT., AL 7075-T6, HARD BLACK ANO
13	1	BOLT, M10 X 78	1807061	BOLT, 10 MM X 78 MM, M6 X 1 INT., AL 7075-T6, HARD BLACK ANO
42	3	SCREW, M6 X 12	180566-012 FBY	FLAT HEAD C'SUNK SOCKET SCREW, M6-1.0 X 12 MM, A4/316 SS, 55060.060.012
55	1	WASHER	1807064	C'SUNK WASHER (FOR M6 SCREW): ID: 6 X OD: 14.6 X 3.25 MM THK
43	1	SCREW, M6 X 16	180566FBY-016	FLAT HEAD C'SUNK SOCKET SCREW, M6-1.0 X 16 MM, A4/316 STAINLESS STEEL
12	1	BOLT, SHK.	1807062	SHOCK BOLT, SOLID, OD: 8 MM, L: 41 MM
54	1	SPACER, MP	1807038	MAIN PIVOT CENTRE SPACER, ID: 10, L: 48
			1810006	CHAIN GUIDE KIT
18	1	CHAIN GUIDE	3398001	CHAIN GUIDE
41	2	SCREW	1807132	M6-1.0, 25 MM LONG, SOCKET HEAD
56	1	WASHER	1807133	CHAIN GUIDE WASHER
53	3	SPACER	3398002	CHAIN GUIDE SPACER

#	QTY	ITEM	PARTS NO.	DESCRIPTION
			1810007	BIKE PROTECTION KIT A
36	1	PROTECTOR	3708008	SEATSTAY PROTECTOR
37	1	PROTECTOR	3708022	MULTIBIKE DOWN-TUBE PROTECTOR
38	1	PROTECTOR	3708035	MULTIBIKE CHAINSTAY PROTECTOR
			1817011	AXLE KIT BOOST
2	1	AXLE, REAR	3227009	REAR AXLE 12 X 173 MM, HARD BLACK ANO
58	1	WASHER	3227006	WASHER, 12 X 19 X 0.5 MM, 304 SS
			1818003	SHOCK BEARING EYELET KIT
3	2	BEARING	1807036	ENDURO 698 LLU MAX 19 X 8 X 6
6	1	BEARING SLEEVE	1807028	BEARING EYELET SLEEVE FOR SR 19 X 8 X 6 CUP
8	2	BEARING SPACER	1807099	EYELET BEARING SPACER, 5.3 MM THK, FOR 40 MM LINK WIDTH
14	2	BRG CUP	1807026	BEARING EYELET FOR SR 19 X 8 X 6 BRG
			1817017	PIVOT BEARING KIT
4	8	BEARING	1807042	ENDURO BEARING 6900 2RS MAX TYPE, 22 X 10 X 6 SIZE
			18187023	HEAD-TUBE PANEL KIT
29	1	HT PANEL, LEFT	1097136	HT PORT PANEL, LEFT
30	1	HT PANEL, RIGHT	1097140	HT PORT PANEL, RIGHT
46	2	SCREW, M5 X 16	1806009	FLAT HEAD C'SUNK SOCKET SCREW, M5-0.8 X 16 MM, ALUMINUM
			1810008	DOWN-TUBE PORT COVER KIT
35	1	PORT COVER	1805056	SHIM. DI2 PORT COVER PLATE, PLASTIC
16	1	CABLE PORT	1807066	CABLE PORT, 2-PIECE, BOTTOM HALF
17	1	CABLE PORT	1807067	CABLE PORT, 2-PIECE, TOP HALF
44	4	SCREW, M4 X 16	1805077	C'SUNK SOCKET SCREW, M4 X 16 MM, ZINC-PLATED 10.9 STEEL
45	1	SCREW, M4 X 8	1807068	C'SUNK SOCKET SCREW, M4 X 8 MM, ZINC-PLATED 10.9 STEEL
			1810009	RIDE-9 FLIP CHIP KIT
21	2	FLIP CHIP	1807003	FLIP CHIP, OUTSIDE, AL 7075, BLACK ANODIZE
22	2	FLIP CHIP	1807004	FLIP CHIP, INSIDE, AL 7075, BLACK ANODIZE