

ALTITUDE CARBON



PRO TIPS & TRICKS

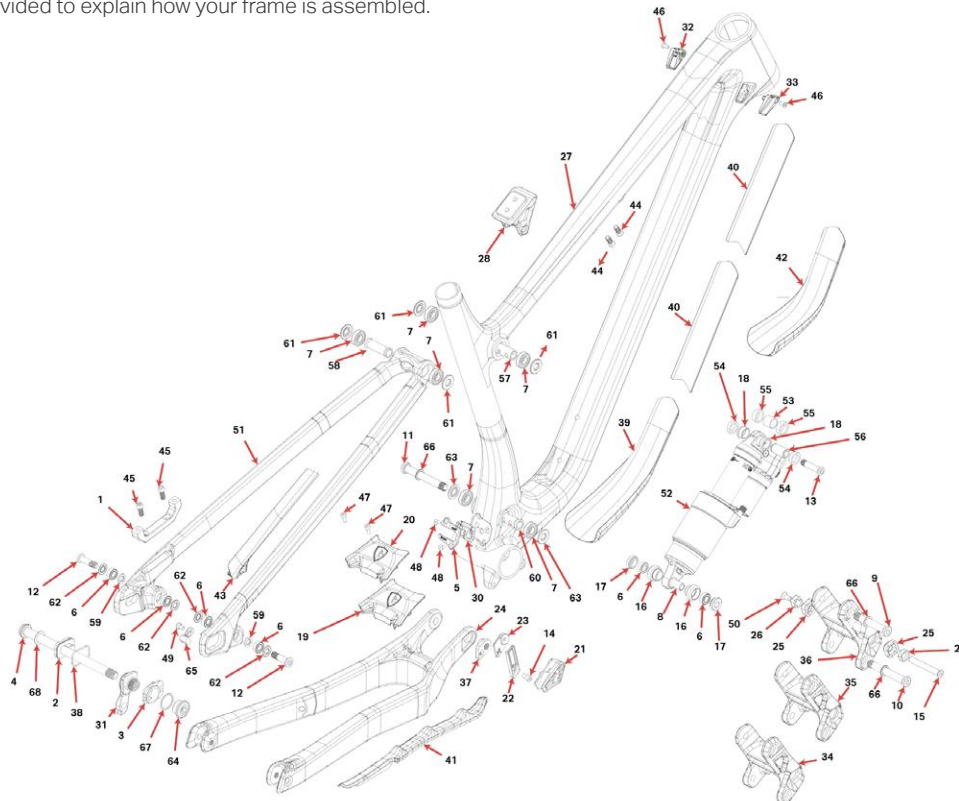
- When tuning your suspension, write down your settings so you can refer back to them. Better yet, use an online spreadsheet on your phone!
- Use a 4 mm plastic housing ferrule to plug any unused cable ports at the head tube.
- When removing your rear wheel, you can rest the chain on the driveside seatstay protector to prevent it from dangling awkwardly.
- When replacing shift or post housing, you can use a RockShox reverb tool to simply pull a new piece of housing right into place, without disturbing the inner foam tubes.

- When assembling pivot bolts, use grease to “stick” any spacers into place while you assemble.
- Insert pivots through bearings/spacers so they sit flush with the inside of the inner race, holding washers in place while you assemble.
- Zip-tie a spare derailleur hanger to your saddle rails so you always have one with you when you’re deep in the woods.



EXPLODED VIEW

Please refer to the table for torque values and assembly details. These views are provided to explain how your frame is assembled.



SMALL PARTS KITS

Please refer to the small parts kits available for purchase.

There are several kits that can help you maintain your bike for maximum trail performance: <https://shop.bikes.com/collections/parts>.

These are available from your local dealer and on: www.bikes.com.

#	QTY	ITEM	PARTS NO.	DESCRIPTION
				1811024
				2021 ALTITUDE LINK 27.5" (S,M)
35	1	LINK	1091006	2021 ALTITUDE LINK 27.5" (S, M)
				1811025
				2021 ALTITUDE LINK 29" (M, L, XL)
36	1	LINK	1091001	2021 ALTITUDE LINK 29" (M, L, XL)
				1811003
				2021 HANGER KIT
31	1	HANGER	1091004	REAR DER. HANGER, EXT THREAD, UDH COMPATIBLE
64	1	HANGER NUT	1801008	HANGER/AXLE NUT FOR UDH COMPATIBLE HANGER
67	1	WASHER	1801009	WASHER 20X24X0.5MM, 304 SS
				1811004
				PIVOT BOLT KIT ALT 2021
9	1	BOLT	1800011	LINK BOLT, UPPER, M10X1.0, L:58.5, 6MM HEX
10	1	BOLT	1801004	LINK BOLT, LOWER, M10X1.0, L:70.5, 6MM HEX
66	3	WASHER	1800019	WASHER ID: 10.2, OD: 15.5, T: 1
60	1	SLEEVE	1801006	MAIN PIVOT BEARING SLEEVE, OD:15, ID:10, T:39, 6061 ALU
63	2	SPACER	1800047	MP BEARING SPACER, OD:22, ID:10, T:2.65
11	1	BOLT	1801005	MP BOLT, M10X1.25, L:75, 6MM HEX
37	1	MP CHIP	1801001	MAIN PIVOTCHIP
57	1	SLEEVE	1800008	TT BEARING SLEEVE, ID:10, OD:14, L:29
61	4	SPACER	1800009	LINK BEARING SPACER, OD:22, ID:10, T:2.5
58	1	SLEEVE	1800010	SS BEARING SLEEVE, ID:10, OD:14, L:41, NECKED
12	2	BOLT	1801007	DROPOUT BOLT, M8X1.0, L:30, 6MM HEX
62	4	SPACER	1800039	DO BEARING SPACER, OD:16, ID:8, T:1.5, 6061 ALU
59	2	SLEEVE	1800040	DROPOUT BEARING SLEEVE, OD:14, ID:8, T:1.8, 6061 ALU
				1810005
				PIVOT BEARING KIT ALT 2021
7	6	BEARING	1807042	ENDURO BEARING 6900 2RS MAX TYPE, 22X10X6 SIZE
6	4	BEARING	1801010	ENDURO 688 LLU MAX 16X8X5
				1811006
				SHOCK BOLT KIT ALT 2021
13	1	BOLT	1801018	SHOCK BOLT, M8X1.0, L:34.5, 5MMHEX
15	1	BOLT	1807049	CSUNK BOLT, 8MM X 57MM X M6 INT
50	1	SCREW, M6X12	180566-012-BK	FLAT HEAD CSUNK SOCKET SCREW, M6-1.0 X 12MM, STAINLESS BLACK

SMALL PARTS KITS

#	QTY	ITEM	PARTS NO.	DESCRIPTION
			1811007	SHOCK BEARING EYELET KIT ALT 2021
17	2	BRG SPACER	1800032	EYELET BEARING SPACER, T:6.3, FOR 40 MM LINK WIDTH
6	2	BEARING	1801010	ENDURO 688 LLU MAX 16X8X5
8	1	BEARING SLEEVE	1807028	BEARING EYELET CENTRE SLEEVE
16	2	BRG CUP	1800031	BEARING EYELET FOR 16X8X5 BRG
			1811008	CHAIN GUIDE KIT ALT 2021
14	1	BOLT	1801019	SOCKET HEAD CAP SCREW M5X8, BLUE LOCTITE
21	1	CHAINGUIDE	3391004	ONEUP CHAINGUIDE ASSEMBLY (1C0686)
22	1	CHAINGUIDE BASE	3391001	BASE PART OF CHAINGUIDE
23	1	CHAINGUIDE SLIDE	3391002	SLIDING PART OF CHAINGUIDE
			1811009	BIKE PROTECTION ALT 2021 FOR 29" & LG/XL 27.5"
41	1	PROTECTOR	3701003	CHAINSTAY PROTECTOR
43	1	PROTECTOR	3701001	SEATSTAY PROTECTOR
39	1	PROTECTOR	370001	DOWNTUBE PROTECTOR
40	2	PROTECTOR	370002	TAILGATE PROTECTOR
			1811010	BIKE PROTECTION ALT 2021 FOR XS/S/M 27.5"
41	1	PROTECTOR	3701003	CHAINSTAY PROTECTOR
43	1	PROTECTOR	3701001	SEATSTAY PROTECTOR
40	2	PROTECTOR	370002	TAILGATE PROTECTOR
42	1	PROTECTOR	3701005	DOWNTUBE PROTECTOR XS, S, M (27.5")
			1817011	AXLE KIT BOOST
4	1	AXLE, REAR	3227009	REAR AXLE 12X 173MM, HARD BLACK ANO
68	1	WASHER	3227006	WASHER, 12X19X0.5MM, 304 SS
			1811011	AXLE FLIP CHIP KIT
2	1	AXLE CHIP	3221001	AXLE FLIP CHIP, LEFT
3	1	AXLE CHIP	3221002	AXLE FLIP CHIP, RIGHT
38	1	O-RING	1805081	O-RING, ID 24.5MM, W:1.50 NITRILE
			1811012	UDH STOPPER KIT
65	1	UDH STOP	1801003	UDH STOPPER
49	1	SCREW, M5X10	1808152OVT	CSUNK SOCKET SCREW, M5-0.8X10MM. BLACK STAINLESS STEEL
			1811013	BRAKE ADAPTER KIT FOR 2 POSITION AXLE
1	1	ADAPTER	1801022	BRAKE ADAPTER
45	2	SCREW	1801023	M6-1.0, 22MM LONG, SOCKET HEAD

SMALL PARTS KIT

#	QTY	ITEM	PARTS NO.	DESCRIPTION
				1811015 ALTITUDE FWD SHOCK YOKE KIT
28	1	FWD SHOCK YOKE	1091002	ALTITUDE FWD SHOCK YOKE
44	2	SCREW	1801014	M6-1.0, 14MM LONG, SOCKET HEAD
				1810022 HEAD TUBE PANEL KIT 2020
32	1	HT PORT COVER, LEFT	1800004	HT PLASTIC PORT COVER, M4, LEFT
33	1	HT PORT COVER, RIGHT	1800003	HT PLASTIC PORT COVER, M4, RIGHT
46	2	SCREW, M4X10	1800024-BK	CSUNK SOCKET SCREW, M4X10MM, STAINLESS BLACK
				1811016 BB CABLE PORT KIT ALT 2021
5	1	BB PORT COVER	1800001	SLAYER BB PLASTIC PORT COVER
30	1	GROMMET	1800002	SLAYER BB PORT GROMMET, 85A
44	2	SCREW	1801014	M6-1.0, 14MM LONG, SOCKET HEAD
				1810009 RIDE9 FLIP CHIP KIT
25	2	FLIP CHIP	1807003	FLIP CHIP, OUTSIDE, AL7075, BLACK ANODIZE
26	2	FLIP CHIP	1807004	FLIP CHIP, INSIDE, AL7075, BLACK ANODIZE
				1811017 CANADIAN SHIELD 29 KIT ALT 2021
19	1	CANADIAN SHIELD 29	1807003	29" CHAINSTAY YOKE COVER
47	2	SCREW, M4X10, BLACK	1807004	SOCKET HEAD CAP SCREW; M4X10
				1811018 CANADIAN SHIELD 27.5 KIT ALT 2021
20	1	CANADIAN SHIELD 27.5	1991006	27.5" CHAINSTAY YOKE COVER
47	2	SCREW, M4X10, BLACK	1801013	SOCKET HEAD CAP SCREW; M4X10