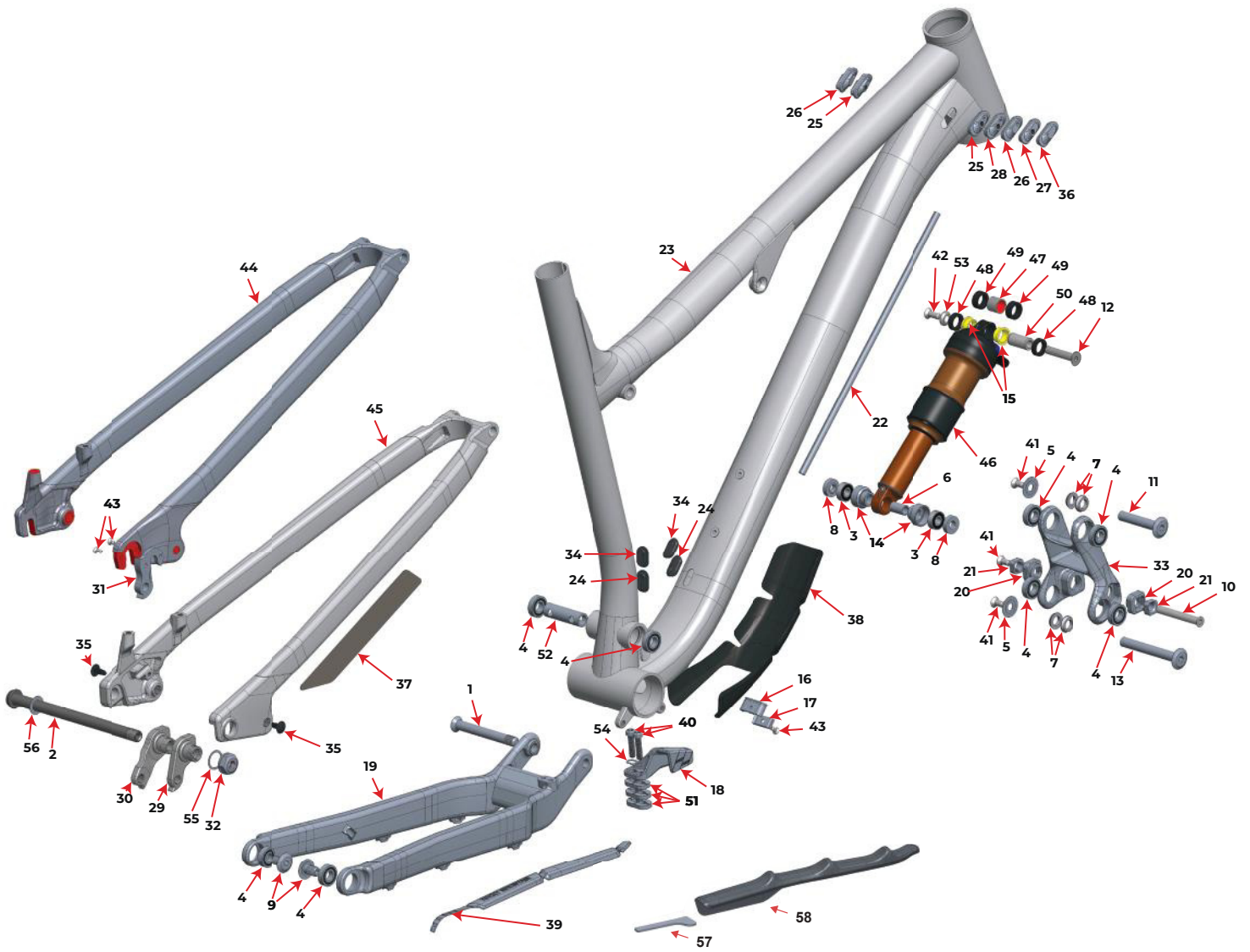


MY20 MY19

# Reaper 27.5



Parts Kits and Price List are subject to change without notice.  
A \$10 handling fee will be charged for order less than \$50.

## 2021\_2020\_2019 Reaper 27.5

# QTY PART NO. DESCRIPTION

**1817011** AXLE KIT BOOST

2	1	3227009	REAR AXLE 12X 173MM, HARD BLACK ANO
56	1	3227006	WASHER, 12x19x0.5MM, 304 SS

**1819012** TBOLT LINK WITH BEARING KIT

33	1	1098056	THUNDERBOLT LINK, 85MM LONG, RIDE9, AL7075-T6, HARD BLACK ANO
4	4	1807042	ENDURO 6900 2RS MAX, 22X10X6

**1818012** HANGER KIT SHIMANO DIRECT MOUNT

30	1	1099041	REAR DER. HANGER, EXT THREAD, SHIMANO DIRECT MOUNT
32	1	1099033	HANGER NUT, M16X1, 8MM HEX
55	1	1808029	WASHER, 16x20x0.5MM, 304 SS

**1818013** KIT STANDARD HANGER

29	1	1099031	REAR DER. HANGER, EXT THREAD, STD MOUNT
32	1	1099033	HANGER NUT, M16X1, 8MM HEX
55	1	1808029	WASHER, 16x20x0.5MM, 304 SS

**1810005** PIVOT BOLT KIT

1	1	1807029	MP AXLE, M10X1.25, L:84Mm, AL7075-T6 HARD BLACK ANO
5	2	1807043	6900 BEARING CAP, AL 7075 T-6, HARD BACK ANO
7	4	1807044	6900 BEARING SPACER
9	2	1807046	BOLT, 10MM X 15MM, M10X1 EXT., AL 7075 T-6 HARD BLACK ANO
10	1	1807049	CSUNK BOLT, 8MM X 57MM X M6 INT.
11	1	1807060	BOLT, 10MM X 54MM, M6X1 INT., AL 7075-T6, HARD BLACK ANO
13	1	1807061	BOLT, 10MM X 78MM, M6X1 INT., AL 7075 T-6, HARD BLACK ANO
41	3	180566-012	FLAT HEAD C'SUNK SOCKET SCREW, M6-1.0 X 12mm, A4/316 SS, 55060.060.012
53	1	1807064	C'SUNK WASHER: (for M6 screw) ID:6 x OD:14.6 x 3.25mm THK.
42	1	180566-016	FLAT HEAD C'SUNK SOCKET SCREW, M6-1.0 X 16mm, A4/316 STAINLESS STEEL

12 1 1807062 SHOCK BOLT, SOLID, OD:8MM, L: 41MM  
52 1 1807038 MAIN PIVOT CENTER SPACER, ID:10, L:48

**1817017 BEARING KIT**

4 8 1807042 ENDURO 6900 2RS MAX, 22X10X6

**3708023 BIKE PROTECTION KIT A**

37 1 3708008 SEATSTAY PROTECTOR  
38 1 3708022 MULTIBIKE DOWNTUBE PROTECTOR  
39 1 3708035 MULTIBIKE CHAINSTAY PROTECTOR

**1818003 SHOCK BEARING EYELET KIT**

3 2 1807036 ENDURO 698 LLU MAX 19X8X6  
6 1 1807028 BEARING EYELET SLEEVE FOR SR 19X8X6 CUP  
8 2 1807099 EYELET BEARING SPACER, 5.3MM THK, FOR 40MM LINK WIDTH  
14 2 1807026 BEARING EYELET FOR SR 19X8X6 BRG

**1810009 RIDE 9 FLIP CHIP KIT**

20 2 1807003 FLIP CHIP, OUTSIDE, AL7075, BLACK ANODIZE.  
21 2 1807004 FLIP CHIP, INSIDE, AL7075, BLACK ANODIZE.

**1398002 SPIRIT GUIDE KIT**

18 1 3398001 CHAIN GUIDE  
40 2 1807132 M6-1.0, 25MM LONG, SOCKET HEAD  
54 1 1807133 CHAIN GUIDE WASHER  
51 3 3398002 CHAIN GUIDE SPACER

**1818014 GROMMET KIT FOR ALLOY FRAME**

25 2 1809004 RUBBER GROMMET FOR 2 CABLES, 5mm,4mm YF-W13-2  
26 2 1809005 RUBBER GROMMET FOR 1 CABLE 4mm YF-W13-4  
27 1 1809006 RUBBER GROMMET FOR 1 CABLE 5mm YF-W13-5  
28 1 1809007 RUBBER GROMMET FOR 2 CABLES, 5mm, 5mm YF-W13-8

36	1	1809008	RUBBER PLUG YF-W13-7
34	2	1807077	34.9MM SEAT TUBE PLUG
24	2	1807078	34.9MM SEAT TUBE DROPPER GROMMET

<b>1818006</b>	<b>Alloy seat stay Cap Kit for alloy frames only</b>
----------------	--

35	2	1808034	PLASTIC PLUG FOR M5 THREAD, 12MM BUTTON HEAD, BLACK PLASTIC
----	---	---------	---

<b>1819014</b>	<b>DOWNTUBE CABLE CLAMP KIT</b>
----------------	---------------------------------

16	1	1807066	CABLE PORT, 2-PIECE, BOTTOM HALF
17	1	1807067	CABLE PORT, 2-PIECE, TOP HALF
43	1	1807068	C'SUNK SOCKET SCREW, M4x8mm, zinc plated 10.9 steel

<b>1810028</b>	<b>2018 ALT/ THUNDERBOLT CS PROTECTOR RETRO-FIT CR/AL</b>
----------------	---

57	1	3700070	CHAINSTAY PROTECTOR DIE CUT TAIL SHORT
58	1	370005A	RETROFIT CHAINSTAY PROTECTOR

Sold as a kit only. Individual part not sold separately