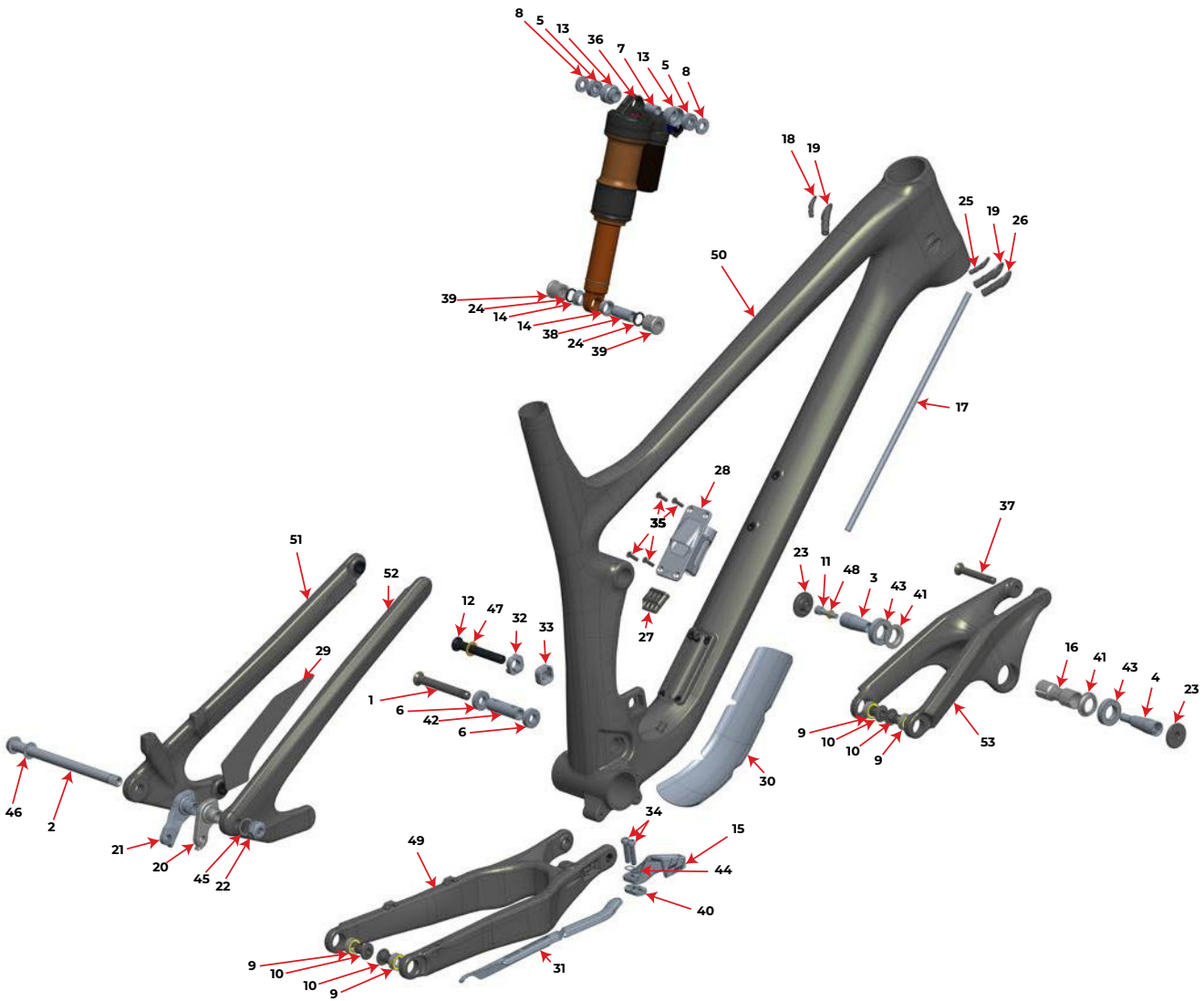


MY19 MY18 MY17

Slayer Carbon



Parts Kits and Price List are subject to change without notice.
A \$10 handling fee will be charged for order less than \$50.

2019_2018_2017 Slayer Carbon

#	QTY	PART NO.	DESCRIPTION
---	-----	----------	-------------

1817011	Axle kit		
---------	----------	--	--

46	1	3227006	WASHER, 12x19x0.5MM, 304 SS
2	1	3227009	REAR AXLE 12X 173MM, HARD BLACK ANO

1817012	bearing kit		
---------	-------------	--	--

6	2	1807042	ENDURO BEARING 6900 2RS MAX TYPE, 22X10X6 SIZE
43	2	1807112	BEARING 6903 LLU MAX 17MM*30MM*7MM
9	4	1807034	Slayer Rear pivots bearing, DR 11197 LLU MAX, ENDURO

1817013	SLAYER protector kit		
---------	----------------------	--	--

29	1	3707004	SLAYER SEATSTAY PROTECTOR
30	1	3708034	SLAYER DOWNTUBE PROTECTOR
31	1	3708037	SLAYER CHAINSTAY PROTECTOR

1817014	Di2 Panel kit		
---------	---------------	--	--

28	1	1097023	SHIM. DI2 PORT SLYR. COVER PLATE, PLASTIC
35	4	1806013	C'SUNK SOCKET SCREW, M4x16mm, AL6061-T6, HARD BLACK ANO
27	1	1097021	CABLE 4-HOLE THROUGH PLUG, RUBBER

1398002	SPIRIT GUIDE KIT		
---------	------------------	--	--

15	1	3398001	CHAIN GUIDE
34	2	1807132	M6-1.0, 25MM LONG, SOCKET HEAD
40	3	3398002	CHAIN GUIDE SPACER
44	1	1807133	CHAIN GUIDE WASHER

1817016	bearing eyelet kit		
---------	--------------------	--	--

8	2	1807027	EYELET BEARING SPACER, 2.8MM THK, FOR 35MM LINK WIDTH
5	2	1807036	ENDURO 698 LLU MAX 19X8X6
13	2	1807026	BEARING EYELET FOR SR 19X8X6 BRG

7 1 1807028 BEARING EYELET SLEEVE FOR SR 19X8X6 CUP

1819017	SLAYER BEARING KIT FOR LINKS
---------	------------------------------

41 2 1806093 MAIN PIVOT BEARING SPCR., AL7075-T6, HARD BLACK ANODIZE
43 2 1807112 BEARING 6903 LLU MAX 17MM*30MM*7MM
9 2 1807034 Slayer Rear pivots bearing, DR 11197 LLU MAX, ENDURO

1819018	SLAYER PIVOT BOLT KIT
---------	-----------------------

37 1 1807037 Upper Shock bolt, 8mm OD x XLmm. Steel w. black plate.
23 2 1806087 TOP PIVOT LOCKNUT M12X1, AL7075-T6, HARD BLACK ANO.
11 1 1807039 SOCKET HEAD CAP SCREW; M6X25
48 1 1807069 BRASS WASHER, 10OD X 6ID X 1.5T
3 1 1806088 17MM TOP PIVOT AXLE, LEFT, AL7075-T6.
4 1 1806089 17MM TOP PIVOT AXLE, RIGHT, AL7075-T6
16 1 1806090 TOP PIVOT COLLET, AL7005-T6, HARD BLACK ANODIZE
10 4 1807035 Rear pivots 11mmODx1.0 x 16L Axle, AL7075-t6, Hard Black ano
1 1 1807029 MP AXLE, M10X1.25, L:84Mm, AL7075-T6 HARD BLACK ANO
42 1 1807038 MAIN PIVOT CENTER SPACER, ID:10, L:48
12 1 1807024 Lower Shock bolt, 10mm OD x 75MML. AL7075-T6 Black ano
47 1 1806011 BRASS WASHER, 16.5OD X 11ID X 1.5T
39 2 1807102 SLAYER BOT. SHOCK REDUCER, FOR ID:10, OD:12.7 x 30mm PIN

1818012	HANGER KIT SHIMANO DIRECT MOUNT
---------	---------------------------------

21 1 1099041 REAR DER. HANGER, EXT THREAD, SHIMANO DIRECT MOUNT
22 1 1099033 HANGER NUT, M16X1, 8MM HEX
45 1 1808029 WASHER, 16x20x0.5MM, 304 SS

1818013	KIT STANDARD HANGER
---------	---------------------

20 1 1099031 REAR DER. HANGER, EXT THREAD, STD MOUNT
22 1 1099033 HANGER NUT, M16X1, 8MM HEX
45 1 1808029 WASHER, 16x20x0.5MM, 304 SS

1819019	RIDE 4 FLIP CHIP KIT
---------	----------------------

32 1 1807040 RIDE-4 CHIP, NO THREAD, SHORT, AL6061-T6 HARD BLACK ANO

33 1 1807041 RIDE-4 CHIP, THREADED, SHORT, AL6061-T6 HARD BLACK ANO

1819020	SLAYER GROMMET & PLUGS KIT
---------	----------------------------

18 1 1095058 CABLE PORT RUBBER GROMMET, DI2.

19 2 1097027 CABLE PORT GROMMET, HOSE OR HOUSING, SPLIT, RUBBER

25 1 1093001 CABLE PORT RUBBER PLUG

26 1 1095088 CABLE PORT RUBBER PLUG FOR OVERSIZED 9MM ENTRY THRU-PORT