

# INSTINCT & PIPELINE ALLOY





## TABLE OF CONTENTS

Introduction	3
Shrediquette	3
Getting to know your bike	4
Basic set-up	5
RIDE-9	6
Critical dimensions	7
Shock eyelet bearing	8
Cable/wire routing	8
Pro tips & tricks	9
Exploded view	9
Full list of parts	10
Small-parts kits	12
Warranty information	14



---

**Rider:**  
Dylan Forbes

**Photo:**  
Margus Riga

**Location:**  
Whistler, BC



## INTRODUCTION

This manual contains important safety, maintenance and user information. Read and understand it thoroughly before your first ride on your new Rocky Mountain bicycle. This material applies only to the specific platform you have chosen and should be used in conjunction with your Rocky Mountain Owner's Manual, which is included with your bike. Please read the Owner's Manual before your first ride. If you do not have a copy of the Owner's Manual, you can get it from your nearest authorized Rocky Mountain dealer.

**Rider:**

Dylan Forbes

**Photo:**

Margus Riga

**Location:**

Whistler, BC

## SHREDIQUETTE

**Riders**

Always be courteous to other trail users. Use extra caution around domestic animals, such as dogs and horses. Give other trail users right-of-way in all situations, during both climbing and descending.

**Trail**

Only ride your bicycle on trails and paths sanctioned for bicycle use. Follow all local laws and regulations. As for all trail users, care should be taken to avoid impacts on the trail or environment. Do not skid on or modify trails.



## GETTING TO KNOW YOUR BIKE



### Technical details

- Increased anti-squat for better pedalling efficiency
- 29" Wide Trail and 27.5"+ compatible
- Bearings at all pivots, including at lower shock mount (compatible with aftermarket shocks as well)
- Single-sided pivots maximize heel clearance
- Lighter, tooled rear axle
- Improved cable management: large headtube slots, full shift housing, large downtube exit, and internal shift and brake housing
- Seat-tube lengths optimized to accommodate longer dropper posts
- Chainstay and downtube protectors
- Integrated Spirit Guide chainguide, with two-bolt ISCG05
- 1x only
- Lower standover height
- All sizes fit a water bottle in front triangle, even with a reservoir shock

## BASIC SET-UP

There are several variables that can be manipulated to fine-tune the set-up of your suspension. These are some basic guidelines to get you in the ballpark, and you should experiment to see what best suits you from there.

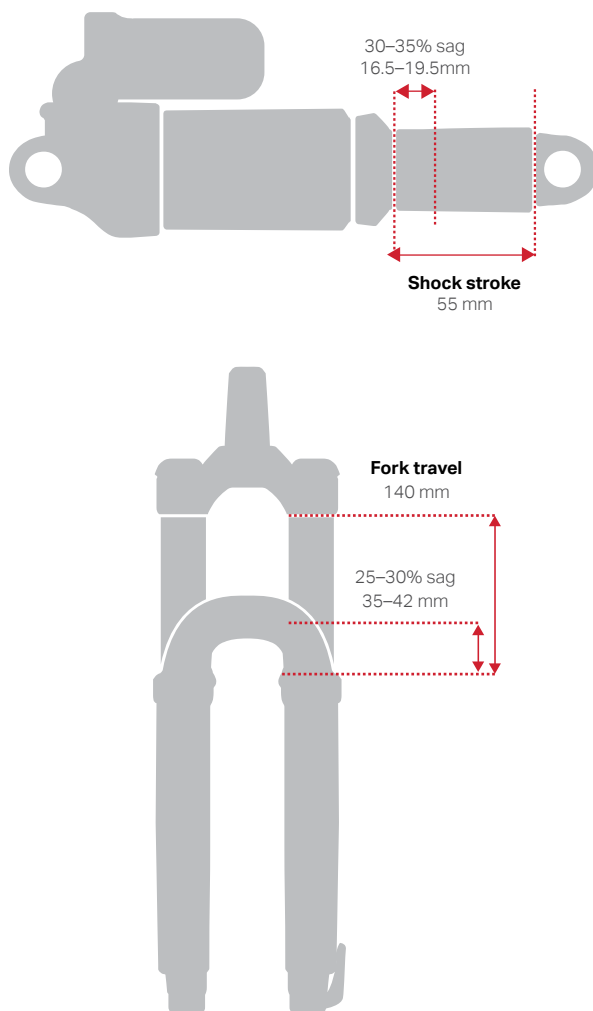
The first step is to set your sag. Sag refers to how much the suspension moves under just the weight of the rider (including all riding accessories). Air pressure or coil preload is adjusted until the desired amount of sag is measured.

### Travel

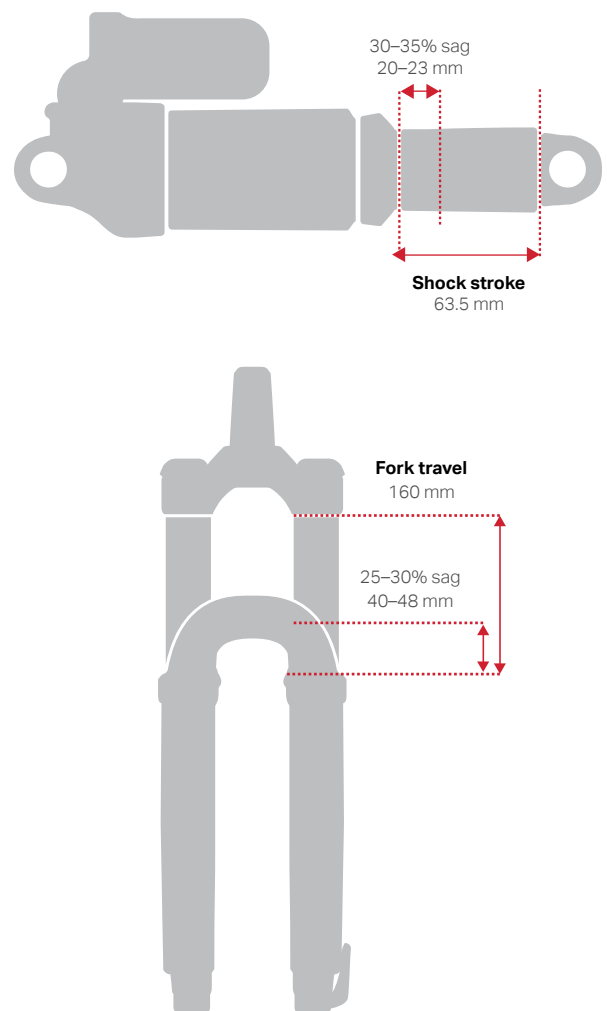
The Instinct and Pipeline models can be set up with either 140 mm or 155 mm (BC Edition) of travel, depending on the shock stroke and length.

Please note: if you choose to convert a 140 mm frame to 155 mm, you **MUST** install the RIDE-9 chips in the most slack geometry position to avoid any potential tire collision with the seat tube.

#### Instinct and Pipeline 140 mm



#### Instinct BC Edition 155 mm



### Rebound

Rebound adjustment controls how quickly your suspension returns to full extension after it hits a bump. Too much rebound control, and the fork or shock will move too slowly, sinking deeper and deeper into its travel under repeated hits, which will feel harsh. Too little, and the suspension can spring back too quickly, causing a loss of traction and control. Follow the manufacturer's recommendations for base settings, and experiment to find your happy place.

## RIDE-9

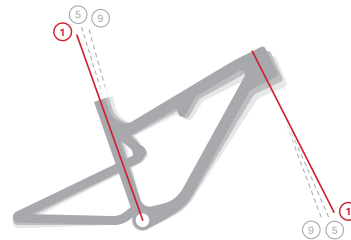
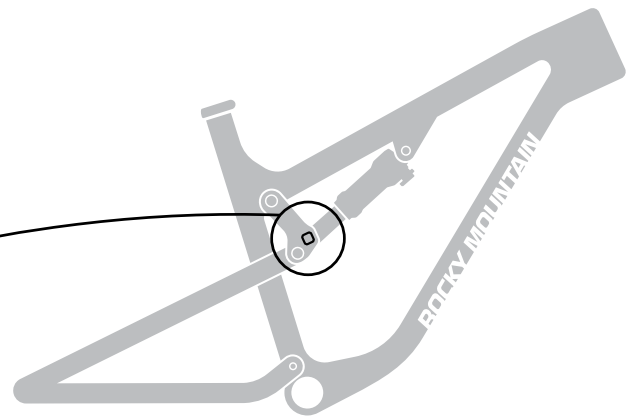
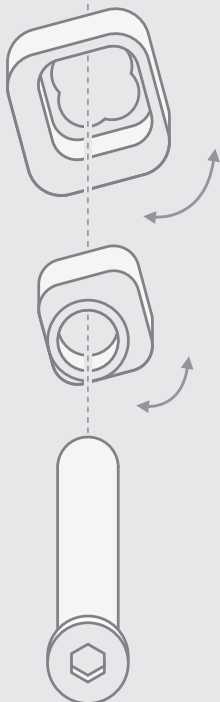
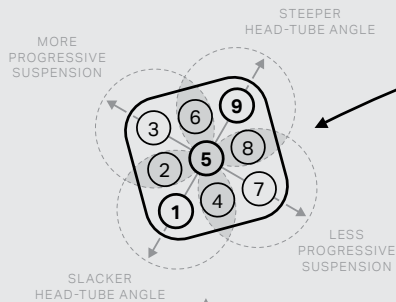
Suspension and geometry set-up are complex artforms with huge variations in rider style, preference, terrain and ability. We do recommend the use of professional services, but we also believe that learning to dial in your own bike is the best way to fully understand its performance.

Adjust your RIDE-9™ position for geometry before considering suspension effects, or variables like air pressure and shock compression.

Make gradual, incremental changes, take notes, and be methodical. Don't adjust in a hurry before a big ride. Take your time and enjoy the process. Go [HERE](#) to download the full guide.

### READY FOR ANY TRAIL

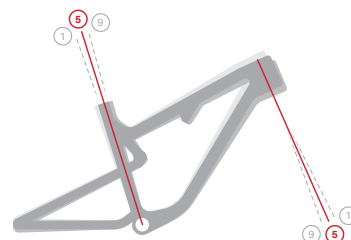
The RIDE-9™ adjustment system allows you to quickly fine-tune your geometry and suspension with a pair of Allen keys.



#### Position 1



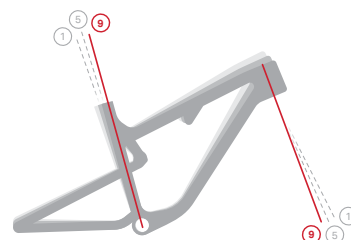
Stability at high speeds. Recommended for more aggressive trail riding.



#### Position 5



Balanced handling and stability.

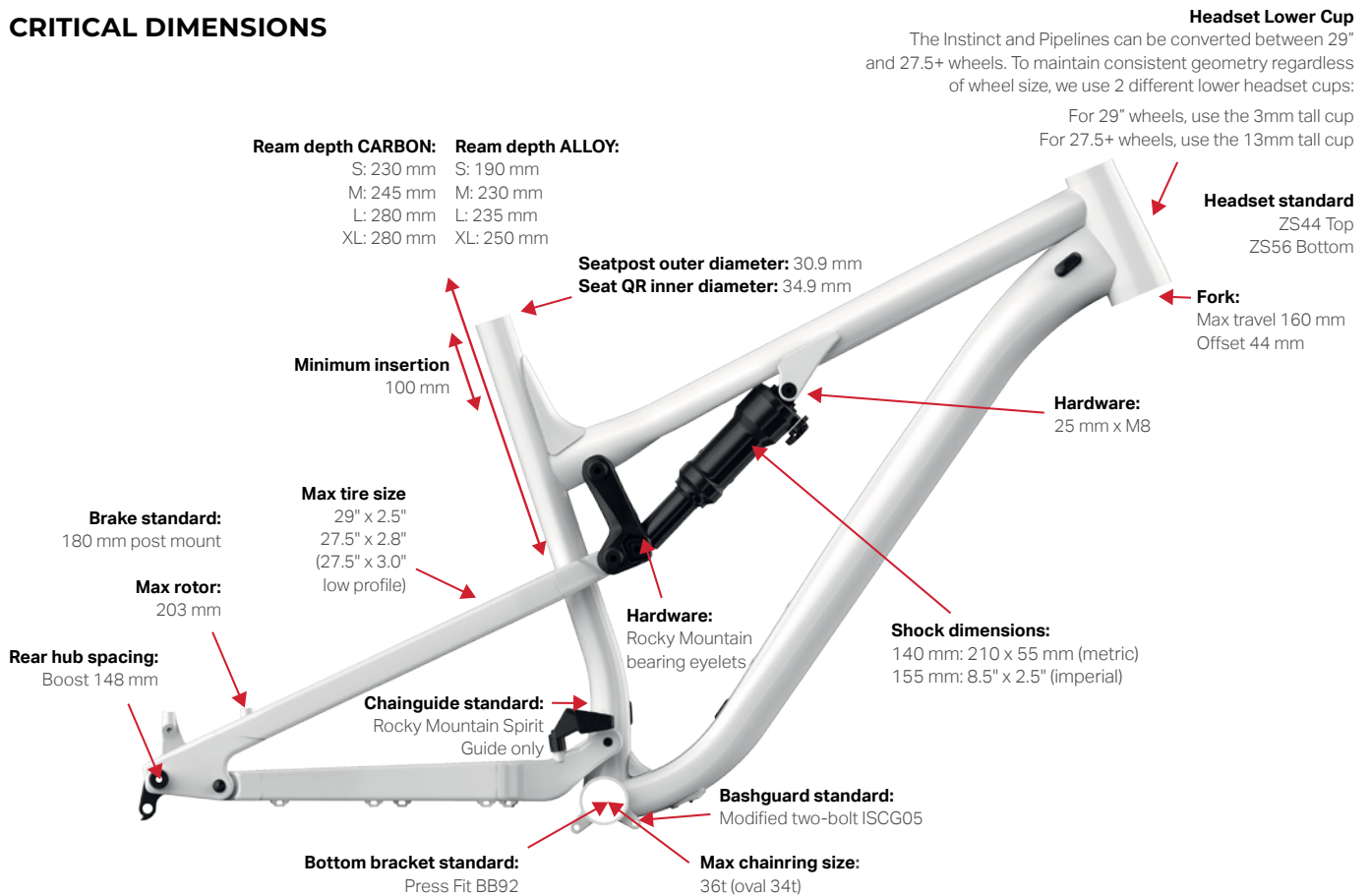


#### Position 9



Quicker handling. Recommended for better climbing traction.

## CRITICAL DIMENSIONS



### Shock fitment

We check clearances for many shocks but cannot guarantee compatibility with all makes and models. Please contact your local dealer if you have a specific question regarding shock fitment.

#### Approved shocks (210 x 55 mm)

##### Fox

- FLOAT DPS
- FLOAT DPX
- FLOAT X2
- DHX2
- Live Valve

##### RockShox

- Deluxe
- Super Deluxe
- Super Deluxe Coil

#### Approved shocks (8.5" x 2.5")

##### Fox

- FLOAT DPS
- FLOAT DPX
- FLOAT X2
- DHX2
- Live Valve

##### RockShox

- Monarch
- Monarch Plus



## SHOCK EYELET BEARING

### Service

Your frame is equipped with cartridge bearings in the rear eyelet, allowing for better small-bump compliance. These bearings are carried by cups that have a very firm press fit into the shock shaft.



If you have your shock serviced, we highly recommend removing these components, as suspension service centres cannot guarantee they will be returned.

To remove the system, follow these steps:

- Use the Enduro Bearings BRT-006 tool, or a [blind bearing puller](#) (8 mm extension) to remove both bearings.
- Remove the centre sleeve.
- Use the blind bearing puller (10 mm extension) to remove the empty cups.

NOTE: the inner diameter of the cups is 11 mm, which means the 12 mm extension won't fit (So don't force it). Use the 10 mm extension.

To install new cups, use a bearing press or vice, making sure to press on the outer edge of the cups, and don't forget the centre spacer sleeve between the cups.

## CABLE/WIRE ROUTING

Your frame features internal cable routing for all cables, wires and hoses to allow integration of the drivetrain of your choosing, while keeping them out of harm's way.

Please click on the links below for instructional how-to videos.

[Shifter cable and housing replacement](#)

[Shifter cable and housing installation \(bare frame\)](#)

[Dropper cable routing](#)



## PRO TIPS & TRICKS

- When tuning your suspension, write down your settings so you can refer back to them. Better yet, use an online spreadsheet on your phone!
- To avoid having to readjust your Spirit Guide if you remove your crank, remove the main pivot bolt and lift the chainstay up, allowing you to remove your crank without removing the chainring.
- When removing your rear wheel, you can rest the chain on the driveside chainstay pivot to prevent it from dangling awkwardly.
- The main bearing spacer sleeve (between the two bearings) has holes in it, to serve as a drift when removing bearings:
  - Use a dull punch (the flatter the better) and rest it inside the holes in the centre sleeve.
  - Tap the bearing out.

- When replacing shift or post housing, you can use a RockShox reverb tool to simply pull a new piece of housing right into place, without disturbing the inner foam tubes.

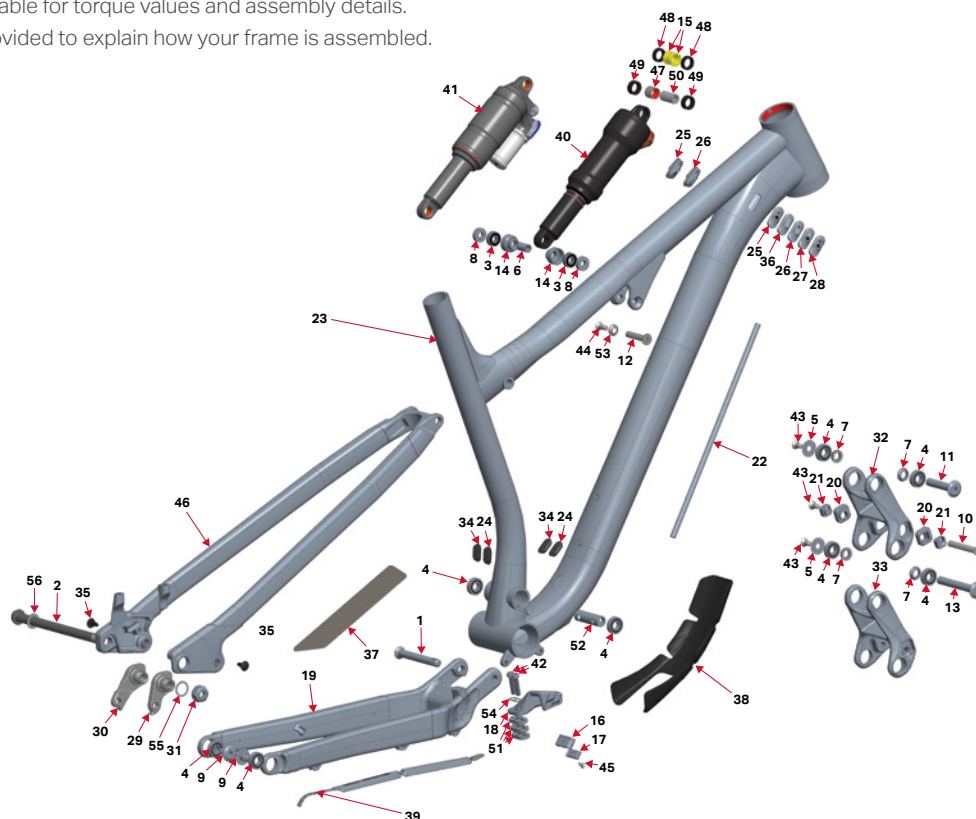


ROCKSHOX REVERB TOOL

- When assembling pivot bolts, use grease to “glue” any spacers into place while you assemble.
- Insert pivots through bearings/spacers so they sit flush with the inside face of the inner race, holding washers in place while you assemble.
- Zip-tie a spare derailleur hanger to your saddle rails so you always have one with you when you’re deep in the woods.

## EXPLODED VIEW

Please refer to the table for torque values and assembly details.  
These views are provided to explain how your frame is assembled.



## FULL LIST OF PARTS

Please refer to the small parts kits available for purchase.

There are several kits available to maintain your bike for maximum trail performance. <https://shop.bikes.com/collections/parts>

These are available from your local dealer, as well as on [www.bikes.com](http://www.bikes.com)

#	QTY	ITEM	PARTS NO.	DESCRIPTION	TORQUE (NM)	INSTALLATION NOTES
1	1	AXLE, MP	1807029	MP AXLE, M: 10 X 1.25 MM, L: 84 MM, AL 7075-T6 HARD BLACK ANO	17	GREASE ON SHOULDER ONLY
2	1	AXLE, REAR	3227009	REAR AXLE 12 X 173 MM, HARD BLACK ANO	10	GREASE ON OUTSIDE
3	2	BEARING	1807036	ENDURO 698 LLU MAX 19 X 8 X 6		GREASE IN ALLOY, DRY IN CARBON
4	8	BEARING	1807042	ENDURO BEARING 6900 2RS MAX TYPE, 22 X 10 X 6 SIZE		
5	2	BEARING CAP	1807043	6900 BEARING CAP, AL 7075-T6, HARD BLACK ANO		
6	1	BEARING SLEEVE	1807028	BEARING EYELET SLEEVE FOR SR 19 X 8 X 6 CUP		
7	4	BEARING SPACER	1807044	6900 BEARING SPACER		
8	2	BEARING SPACER	1807099	EYELET BEARING SPACER, 5.3 MM THK, FOR 40 MM LINK WIDTH		GREASE INSIDE AND OUT
9	2	BOLT	1807046	BOLT, 10 X 15 MM, M10X1 EXT., AL 7075-T6 HARD BLACK ANO	17	BLUE LOCTITE ON THREADS
10	1	BOLT	1807049	C'SUNK BOLT, 8 X 57 MM, M6 INT.	8	BLUE LOCTITE ON THREADS, GREASE ON SHAFT
11	1	BOLT	1807060	BOLT, 10 X 54 MM, M6X1 INT., AL 7075-T6, HARD BLACK ANO	8	BLUE LOCTITE ON THREADS, GREASE ON OUTSIDE
12	1	BOLT SHK.	1807062	SHOCK BOLT, SOLID, OD: 8 MM, L: 41 MM	8	BLUE LOCTITE ON THREADS, GREASE ON SHAFT
13	1	BOLT, M10X78	1807061	BOLT, 10 X 78 MM, M6X1 INT., AL 7075-T6, HARD BLACK ANO	8	BLUE LOCTITE ON THREADS, GREASE ON OUTSIDE
14	2	BRG CUP	1807026	BEARING EYELET FOR SR 19 X 8 X 6 BRG		GREASE INSIDE AND OUT
15	2	BUSHING, FOX	N/A	FOX_IGUS_BUSHING		
16	1	CABLE PORT	1807066	CABLE PORT, 2-PIECE, BOTTOM HALF		
17	1	CABLE PORT	1807067	CABLE PORT, 2-PIECE, TOP HALF		
18	1	CHAIN GUIDE	3398001	CHAIN GUIDE		
19	1	CHAIN STAY	1058140ALU	CHAIN STAY INSTINCT/PIPELINE ALU		
20	2	FLIP CHIP	1807003	FLIP CHIP, OUTSIDE, AL 7075, BLACK ANODIZE		GREASE INSIDE AND OUT
21	2	FLIP CHIP	1807004	FLIP CHIP, INSIDE, AL 7075, BLACK ANODIZE		GREASE INSIDE AND OUT
22	1	FOAM TUBE	N/A	FOAM TUBE		INSTALL ON HOUSING BEFORE INSERTING IN FRAME
23	1	FRONT TRIANGLE	1068140ALU - 1068144ALU	INSTINCT/PIPELINE ALLOY FRONT TRIANGLE		
24	2	GROMMET	1807078	34.9 MM SEAT TUBE DROPPER GROMMET		
25	2	GROMMET	1809004	RUBBER GROMMET FOR 2 CABLES, 5 MM, 4 MM YF-W13-2		
26	2	GROMMET	1809005	RUBBER GROMMET FOR 1 CABLE, 4 MM YF-W13-4		
27	1	GROMMET	1809006	RUBBER GROMMET FOR 1 CABLE, 5 MM YF-W13-5		
28	1	GROMMET	1809007	RUBBER GROMMET FOR 2 CABLES, 5 MM, 5 MM YF-W13-8		
29	1	HANGER	1099031	REAR DER. HANGER, EXT. THREAD, STD MOUNT	20	BLUE LOCTITE ON THREADS
30	1	HANGER	1099041	REAR DER. HANGER, EXT. THREAD, SHIMANO DIRECT MOUNT	20	BLUE LOCTITE ON THREADS
31	1	HANGER NUT	1099033	HANGER NUT, M16X1, 8 MM HEX	20	BLUE LOCTITE ON THREADS



#	QTY	ITEM	PARTS NO.	DESCRIPTION	TORQUE (NM)	INSTALLATION NOTES
32	1	LINK	1098101	INSTINCT LINK, 88 MM LONG, RIDE-9, AL 7075-T6, HARD BLACK ANO		
33	1	LINK	1098102	INSTINCT BC LINK, 88 MM LONG, AL 7075-T6, HARD BLACK ANO		
34	2	PLUG	1807077	34.9 MM SEAT TUBE PLUG		
35	2	PLUG	1808034	PLASTIC PLUG FOR M5 THREAD, 12 MM BUTTON HEAD, BLACK PLASTIC		
36	1	PLUG	1809008	RUBBER PLUG YF-W13-7		
37	1	PROTECTOR	3708008	SEATSTAY PROTECTOR		
38	1	PROTECTOR	3708022	MULTIBIKE DOWNTUBE PROTECTOR		
39	1	PROTECTOR	3708035	MULTIBIKE CHAINSTAY PROTECTOR		
40	1	REAR SHOCK	N/A	REAR SHOCK 210 X 55 MM		
41	1	REAR SHOCK, BC EDITION	N/A	8.5" X 2.5" REAR SHOCK		
42	2	SCREW	1807132	M6-1.0, 25 MM LONG, SOCKET HEAD	6	BLUE LOCTITE ON THREADS
43	3	SCREW M6X12	180566-012 FBY	FLAT HEAD C'SUNK SOCKET SCREW, M6-1.0 X 12 MM, A4/316 SS, 55060.060.012	8	BLUE LOCTITE ON THREADS
44	1	SCREW M6X16	180566FBY-016	FLAT HEAD C'SUNK SOCKET SCREW, M6-1.0 X 16 MM, A4/316 STAINLESS STEEL	8	BLUE LOCTITE ON THREADS
45	1	SCREW, M4X8	1807068	C'SUNK SOCKET SCREW, M4 X 8 MM, ZINC PLATED 10.9 STEEL	2	BLUE LOCTITE ON THREADS
46	1	SEAT STAY	1058142ALU	SEAT STAY INSTINCT/PIPELINE ALU		
47	1	SHOCK BUSHING	N/A	SHOCK BUSHING, ID: 12.7 MM, OD: 15 MM, L: 12.7 MM, STEEL		
48	2	SHOCK REDUCER	N/A	FOX STD REDUCER FOR 25 MM PIN		
49	2	SHOCK REDUCER	N/A	SRAM STD REDUCER FOR 25 MM PIN		
50	1	SHOCK, PIN	N/A	SHOCK PIN: ID: 8 X 25 MM LONG; ALUMINUM		GREASE ON OUTSIDE
51	3	SPACER	3398002	CHAIN GUIDE SPACER		
52	1	SPACER, MP	1807038	MAIN PIVOT CENTRE SPACER, ID: 10 MM, L: 48 MM		
53	1	WASHER	1807064	C'SUNK WASHER: (for M6 screw) ID: 6 X OD: 14.6 X 3.25 MM THK.		
54	1	WASHER	1807133	CHAIN GUIDE WASHER		
55	1	WASHER	1808029	WASHER, 16 X 20 X 0.5 MM, 304 SS		
56	1	WASHER	3227006	WASHER, 12 X 19 X 0.5 MM, 304 SS		

## SMALL PARTS KITS

Please refer to the small parts kits available for purchase.

There are several kits available to maintain your bike for maximum trail performance. <https://shop.bikes.com/collections/parts>

These are available from your local dealer, as well as on [www.bikes.com](http://www.bikes.com)

#	QTY	ITEM	PARTS NO.	DESCRIPTION
			<b>1817011RMB</b>	<b>AXLE KIT</b>
2	1	AXLE, REAR	3227009	REAR AXLE 12 X 173 MM, HARD BLACK ANO
56	1	WASHER	3227006	WASHER, 12 X 19 X 0.5 MM, 304 SS
			<b>1819015</b>	<b>INSTINCT LINK WITH BEARING KIT</b>
32	1	LINK	1098101	INSTINCT LINK, 88 MM LONG, RIDE-9, AL 7075-T6, HARD BLACK ANO
4	4	BEARING	1807042	ENDURO BEARING 6900 2RS MAX TYPE, 22 X 10 X 6 SIZE
			<b>1819016</b>	<b>INSTINCT BC LINK WITH BEARING KIT</b>
33	1	LINK	1098102	INSTINCT BC LINK, 88 MM LONG, AL 7075-T6, HARD BLACK ANO
4	4	BEARING	1807042	ENDURO BEARING 6900 2RS MAX TYPE, 22 X 10 X 6 SIZE
			<b>1818012</b>	<b>HANGER KIT SHIMANO DIRECT MOUNT</b>
30	1	HANGER	1099041	REAR DER. HANGER, EXT. THREAD, SHIMANO DIRECT MOUNT
31	1	HANGER NUT	1099033	HANGER NUT, M16X1, 8 MM HEX
55	1	WASHER	1808029	WASHER, 16 X 20 X 0.5 MM, 304 SS
			<b>1818013</b>	<b>KIT STANDARD HANGER</b>
29	1	HANGER	1099031	REAR DER. HANGER, EXT. THREAD, STD MOUNT
31	1	HANGER NUT	1099033	HANGER NUT, M16X1, 8 MM HEX
55	1	WASHER	1808029	WASHER, 16 X 20 X 0.5 MM, 304 SS
			<b>1810005</b>	<b>PIVOT BOLT KIT</b>
1	1	AXLE, MP	1807029	MP AXLE, M10X1.25, L: 84 MM, AL 7075-T6 HARD BLACK ANO
5	2	BEARING CAP	1807043	6900 BEARING CAP, AL 7075-T6, HARD BLACK ANO
7	4	BEARING SPACER	1807044	6900 BEARING SPACER
9	2	BOLT	1807046	BOLT, 10 X 15 MM, M10X1 EXT., AL 7075-T6 HARD BLACK ANO
10	1	BOLT	1807049	CSUNK BOLT, 8 X 57 MM X M6 INT.
11	1	BOLT	1807060	BOLT, 10 X 54 MM, M6X1 INT., AL 7075-T6, HARD BLACK ANO
13	1	BOLT, M10X78	1807061	BOLT, 10 X 78 MM, M6X1 INT., AL 7075-T6, HARD BLACK ANO
43	3	SCREW M6X12	180566-012 FBY	FLAT HEAD C'SUNK SOCKET SCREW, M6-1.0 X 12 MM, A4/316 SS, 55060.060.012
53	1	WASHER	1807064	C'SUNK WASHER: (for M6 screw) ID: 6 X OD: 14.6 X 3.25 MM THK.
44	1	SCREW M6x16	180566FBY-016	FLAT HEAD C'SUNK SOCKET SCREW, M6-1.0 X 16 MM, A4/316 STAINLESS STEEL
12	1	BOLT SHK.	1807062	SHOCK BOLT, SOLID, OD: 8 MM, L: 41 MM
52	1	SPACER, MP	1807038	MAIN PIVOT CENTER SPACER, ID: 10 MM, L: 48 MM



#	QTY	ITEM	PARTS NO.	DESCRIPTION
			<b>1817017RMB</b>	<b>BEARING KIT</b>
4	8	BEARING	1807042	ENDURO BEARING 6900 2RS MAX TYPE, 22 X 10 X 6 SIZE
			<b>1810007</b>	<b>BIKE PROTECTION KIT A</b>
37	1	PROTECTOR	3708008	SEATSTAY PROTECTOR
38	1	PROTECTOR	3708022	MULTIBIKE DOWNTUBE PROTECTOR
39	1	PROTECTOR	3708035	MULTIBIKE CHAINSTAY PROTECTOR
			<b>1818003</b>	<b>SHOCK BEARING EYELET KIT</b>
3	2	BEARING	1807036	ENDURO 698 LLU MAX 19 X 8 X 6
6	1	BEARING SLEEVE	1807028	BEARING EYELET SLEEVE FOR SR 19 X 8 X 6 CUP
8	2	BEARING SPACER	1807099	EYELET BEARING SPACER, 5.3 MM THK, FOR 40 MM LINK WIDTH
14	2	BRG CUP	1807026	BEARING EYELET FOR SR 19 X 8 X 6 BRG
			<b>1810009</b>	<b>RIDE-9 FLIP CHIP KIT</b>
20	2	FLIP CHIP	1807003	FLIP CHIP, OUTSIDE, AL 7075, BLACK ANODIZE
21	2	FLIP CHIP	1807004	FLIP CHIP, INSIDE, AL 7075, BLACK ANODIZE
			<b>1810006</b>	<b>SPIRIT GUIDE KIT</b>
18	1	CHAIN GUIDE	3398001	CHAIN GUIDE
42	2	SCREW	1807132	M6-1.0, 25 MM LONG, SOCKET HEAD
54	1	WASHER	1807133	CHAIN GUIDE WASHER
51	3	SPACER	3398002	CHAIN GUIDE SPACER
			<b>1818014RMB</b>	<b>GROMMET KIT FOR ALLOY FRAME</b>
25	2	GROMMET	1809004	RUBBER GROMMET FOR 2 CABLES, 5 MM, 4 MM YF-W13-2
26	2	GROMMET	1809005	RUBBER GROMMET FOR 1 CABLE, 4 MM YF-W13-4
27	1	GROMMET	1809006	RUBBER GROMMET FOR 1 CABLE, 5 MM YF-W13-5
28	1	GROMMET	1809007	RUBBER GROMMET FOR 2 CABLES, 5 MM, 5 MM YF-W13-8
36	1	PLUG	1809008	RUBBER PLUG YF-W13-7
34	2	PLUG	1807077	34.9 MM SEAT TUBE PLUG
24	2	GROMMET	1807078	34.9 MM SEAT TUBE DROPPER GROMMET
			<b>1818006RMB</b>	<b>ALLOY SEAT STAY CAP KIT FOR ALLOY FRAMES ONLY</b>
35	2	PLUG	1808034	PLASTIC PLUG FOR M5 THREAD, 12 MM BUTTON HEAD, BLACK PLASTIC
			<b>1819014</b>	<b>DOWNTUBE CABLE CLAMP KIT</b>
16	1	CABLE PORT	1807066	CABLE PORT, 2-PIECE, BOTTOM HALF
17	1	CABLE PORT	1807067	CABLE PORT, 2-PIECE, TOP HALF
45	1	SCREW, M4x8	1807068	C'SUNK SOCKET SCREW, M4X8 MM, ZINC PLATED 10.9 STEEL

## WARRANTY INFORMATION

Your bicycle is warrantied against defects in materials and manufacturing as per the following table:

CATEGORY	TERM	NOTES
Frame members	5 years	Front triangle + rear triangle, links
Hardware	1 year	Pivots, axles, etc.
Electronics	2 years	Drive, iWoc, sensors, charger
Drive wear items	1 year	Pulleys, pinions, transfer chain
Battery	24 months	When the battery level falls below 5%, the Powerplay drive will gradually reduce power output to maximize range.
	or	
	500 Wh:	Range varies depending on several factors, such as assist level, ambient temperature, acceleration, wind resistance, quality of maintenance, battery age, quality of terrain (e.g., hilly and rough), and/or rider weight.
	70% of full capacity remaining after 300 full charging cycles (0% to 100% charge)	
	632 Wh:	If stored for three or more months, charge battery every three months. Failure to do so may cause damage.
75% of full capacity remaining after 500 full charging cycles (0% to 100% charge)		
Components	As per original manufacturer warranty	

All warranty and after-sale service must be handled by the authorized dealer who sold the complete bicycle or frame. We cover your Rocky Mountain frame for defects in material and workmanship from the original date of purchase of your new Rocky Mountain bicycle according to the frame material and the type of use.

### Frame material / type of use

- Carbon fibre: 5 years – Limited\*
- Aluminum – front and fully suspended: 5 years – Limited\*
- Downhill and freeride: 3 years – Limited\*

\* Please refer to the limitations stated below.

### NOTE – Warranty is not valid for:

- Any bicycles previously used for commercial activity, such as rental, courier, police or security bicycles
- The installation of components, parts or accessories that are not originally intended for or compatible with the bicycle (or frame) as sold
- The purchase of a Rocky Mountain bicycle from an unauthorized dealer

- The purchase of a Rocky Mountain bicycle or frame from third-party internet sites (such as eBay), no matter what the listing says
- This limited warranty covers bicycles previously used for commercial activity such as rental (bike park), courier, police, security, etc. against defects in material and workmanship. Hardware, bearings, pivots and bushings are excluded from our warranty policy.

### Warranty coverage against other defects in workmanship and materials

- Coating – paint and decals: 1 year
- Full suspension frame hardware, bearings, pivots and bushings\*: 1 year.  
\*Links are part of the frame.
- Downhill and freeride frame hardware, suspension: 6 months



**What is not covered?**

- Normal wear and tear
- Damage or failure caused by accident, misuse, abuse or neglect
- Extreme or improper use of your Rocky Mountain bicycle outside of its intended purpose
- Improper assembly and/or lack of proper maintenance
- Paint fading caused by the effects of ultraviolet light (UV) or outdoor exposure is not covered by this limited warranty.
- Scratches and/or chips in the paint caused by dirt, rocks, road debris, roof rack transport, etc. are not covered by this limited warranty.
- Components, parts or accessories not compatible with the bicycle (or frame)
- Damage on pressfit bottom bracket caused by improper service or materials/parts is not covered by the Rocky Mountain Limited Warranty.

**Details of what is not covered under warranty**

- Normal wear and tear on tires, tubes, brakes, gear cables, brake pads, etc. is not covered. Your authorized Rocky Mountain dealer will tell you what these normal maintenance items are.
- Consequential damage or any damage caused by accident, misuse or abuse.
- Improper assembly and/or lack of proper maintenance, sandblasting, sanding, grinding, wire brushing, filing, welding, brazing, drilled holes, anodizing, repainting and chrome plating are not covered under your warranty and may void the warranty of the component manufacturers.

- If you ride in extreme terrain, as depicted in mountain biking videos (e.g., by taking "trial"-style riding courses, riding ramps, performing stunts, riding on BMX tracks, riding in the city down stairs and embankments or riding in other similar terrain), you put yourself at great personal risk and forfeit the warranty as outlined in the Warranty Table. It is important to note that bent components, frames, forks, handlebars, seat posts, pedals, cranks and wheel rims are signs of accidents and/or abuse.
- Labour for part replacement or changeover is not included.
- Rocky Mountain Bicycles reserves the right to repair or replace at its discretion any part that is deemed to be covered by a valid warranty.
- Please note that Rocky Mountain Bicycles cannot guarantee a colour match to the original part.
- This warranty extends from the date of purchase, applies only to the original owner, and is not transferable.

**EXCLUSION AND LIMITATION OF DAMAGES**

THE WARRANTY OF ROCKY MOUNTAIN BICYCLES IS LIMITED TO THE REPAIR OR REPLACEMENT OF THE PRODUCTS AND DOES NOT GRANT ANY WARRANTY, EITHER EXPRESSED OR IMPLIED, LEGAL OR CONVENTIONAL, AND DISCLAIMS ANY AND ALL IMPLIED WARRANTIES OF MERCHANTABILITY AND FITNESS FOR PARTICULAR PURPOSES, AND ROCKY MOUNTAIN SHALL UNDER NO CIRCUMSTANCES BE LIABLE FOR DIRECT OR INDIRECT, SPECIAL, INCIDENTAL OR CONSEQUENTIAL DAMAGES, EVEN WHERE ROCKY MOUNTAIN HAS BEEN ADVISED OF SUCH DAMAGES, AND ROCKY MOUNTAIN'S LIABILITY SHALL BE LIMITED TO \$50.00.



**LOVE THE RIDE**

### **Development Centre**

1225 East Keith Road, Unit #10  
North Vancouver, BC V7J 1J3 Canada  
T. 604-980-9938 F. 604-980-9975

### **Head Office**

9095 25th Avenue  
Saint-Georges, QC G6A 1A1 Canada  
T. 1-800-663-2512 F. 1-800-570-8356

*Rocky Mountain, its logo and other trade names are used by Rocky Mountain.  
Some technologies on Rocky Mountain products are patented or patent pending*

© 2019 Rocky Mountain®